



Stunning three bedroom flat with a private garden.

Mount Pleasant Lane, London, E5

£675,000 Leasehold (120 years remaining)



Three bedrooms
Two bathrooms
Private garden
Bike storage
No onward chain

Local Information

Mount Pleasant Lane is a quiet residential street in Clapton and is located close to the River Lea.

Transport links can be found at Clapton Station (0.3 miles) and Rectory Road (0.8 miles) which provides easy access into the City.

There are green open spaces nearby at Springfield Park (0.5 miles) and Millfields Park (0.7 miles)

About this property

Savills are delighted to offer on to the market this stunning architecturally designed three-bedroom flat, set within an imposing Victorian Villa in Clapton. The flat benefits from two bathrooms and a private garden.

Accommodation comprises: entrance hallway into an open plan reception/kitchen room with large glass sliding doors onto the private garden. The kitchen benefits from high-end appliances including granite work surfaces, wood flooring and under-floor heating throughout. The principal bedroom has an en-suite, with two further bedrooms and a family bathroom.

The property comes with a bike storage unit and is sold with no onward chain.



Tenure

Leasehold (120 years remaining)

Local Authority

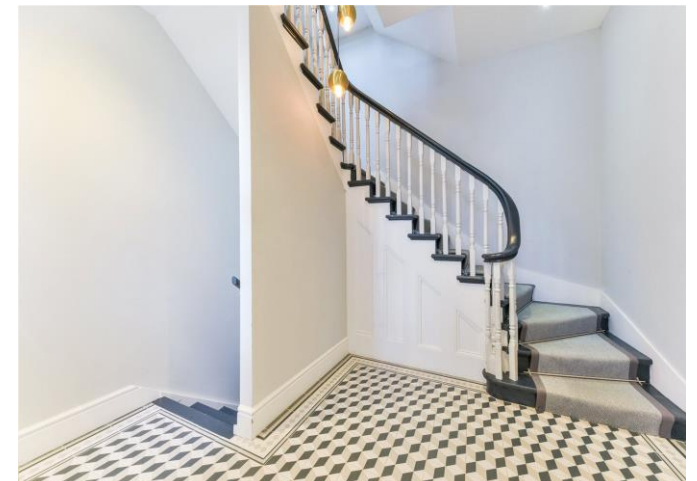
Hackney Council

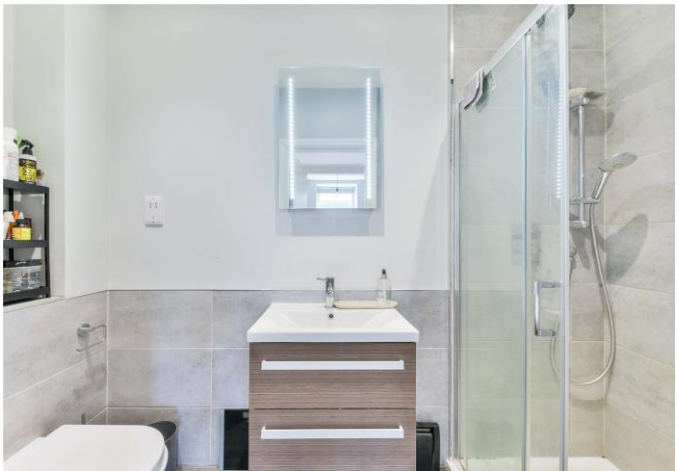
Energy Performance

EPC Rating = C

Viewing

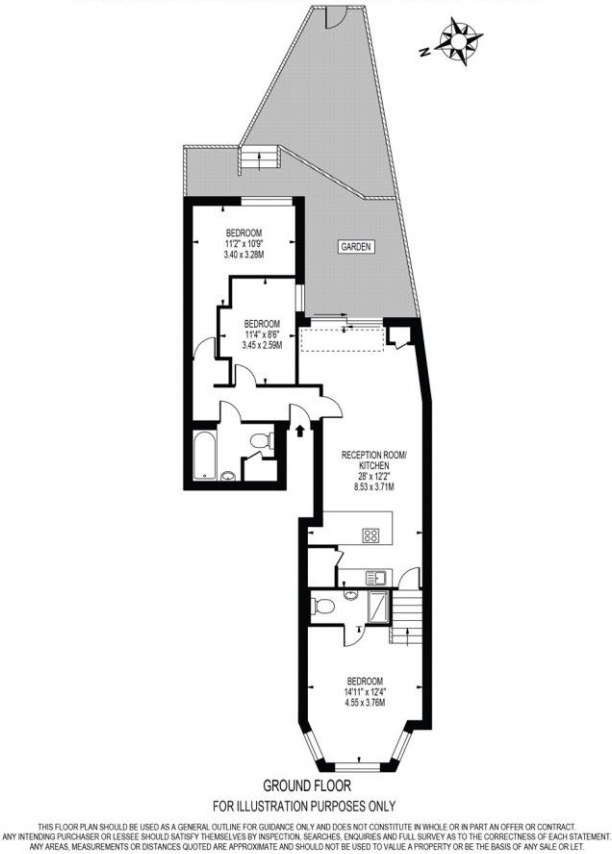
All viewings will be accompanied and are strictly by prior arrangement through Savills Hackney Office.
Telephone: +44 (0) 20 7241 4111.





Mount Pleasant Lane, London, E5
Gross Internal Area 883 sq ft, 81.9 m²

MOUNT PLEASANT LANE
APPROXIMATE GROSS INTERNAL FLOOR AREA: 883 SQ FT - 81.99 SQ M



Energy Efficiency Rating		
	Current	Potential
Very energy efficient - lower running costs		
(92+) A		
(81-91) B		
(69-80) C	76	76
(55-68) D		
(39-54) E		
(21-38) F		
(1-20) G		
Not energy efficient - higher running costs		
England, Scotland & Wales	EU Directive 2002/91/EC	

Important Notice Savills, its clients and any joint agents give notice that 1: They are not authorised to make or give any representations or warranties in relation to the property either here or elsewhere, either on their own behalf or on behalf of their client or otherwise. They assume no responsibility for any statement that may be made in these particulars. These particulars do not form part of any offer or contract and must not be relied upon as statements or representations of fact. 2: Any areas, measurements or distances are approximate. The text, photographs and plans are for guidance only and are not necessarily comprehensive. It should not be assumed that the property has all necessary planning, building regulation or other consents and Savills have not tested any services, equipment or facilities. Purchasers must satisfy themselves by inspection or otherwise. 20220303MEHT

