



# Refurbished three bedroom maisonette in the heart of Mildmay

**Hawthorne Close, Islington, London, N1**

£530 pw (£2,296.67 pcm) plus fees apply, Furnished, Part Furnished, Unfurnished  
Available from 19.05.2021



- Recently Refurbished
- Spacious Bedrooms
- Brand New Kitchen
- Excellent Local Amenities
- Great Transport Links

### Local Information

The property is conveniently located close to the amenities of Mildmay, Dalston & Newington Green. Dalston Junction is 0.2 away and the buses of Kingsland Road offer routes all across London.

### About this property

The property comprises of an entrance hallway, reception room (was used as a bedroom), a brand new kitchen-diner, WC and storage all on the second floor. On the floor above are three double bedrooms along with a modern bathroom and further storage.

### Furnishing

Furnished, Part Furnished, Unfurnished

### Local Authority

London Borough of Islington  
Council Tax Band = C

### Energy Performance

EPC Rating = C

### Viewing

All viewings will be accompanied and are strictly by prior arrangement through Savills Hackney Lettings Office.  
Telephone: +44 (0)20 3889 6177.







Hawthorne Close, Islington, London, N1  
Gross Internal Area 934 sq ft, 86.8 m<sup>2</sup>

Sam McGhee

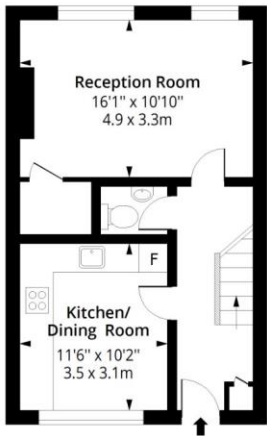
Hackney Lettings

+44 (0)20 3889 6177

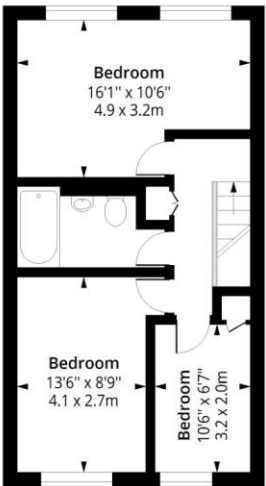
sam.mcghee@savills.com

Hawthorne Close, N1

Approx. Gross Internal Area 934 Sq Ft - 86.77 Sq M

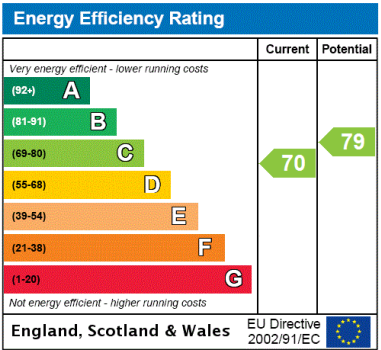


Second Floor  
Floor Area 433 Sq Ft - 40.23 Sq M



Third Floor  
Floor Area 501 Sq Ft - 46.54 Sq M

Floor plan is for illustrative purposes only and is not to scale. Every attempt has been made to ensure the accuracy of the floor plan shown, however all measurements, fixtures, fittings and data shown are an approximate interpretation for illustrative purposes only.  
lpaplus.com



**Important notice** Savills, their clients and any joint agents give notice that: 1. They are not authorised to make or give any representations or warranties in relation to the property either here or elsewhere, either on their own behalf or on behalf of their client or otherwise. They assume no responsibility for any statement that may be made in these particulars. These particulars do not form part of any offer or contract and must not be relied upon as statements or representations of fact. 2. Any areas, measurements or distances are approximate. The text, images and plans are for guidance only and are not necessarily comprehensive. It should not be assumed that the property has all necessary planning, building regulation or other consents and Savills have not tested any services, equipment or facilities. Prospective tenants must satisfy themselves by inspection or otherwise. Please note that the local area may be affected by aircraft noise, you should make your own enquiries regarding any noise within the area before you make any offer.

\*There are different rules and fees for different tenancy types. For details of our fees and charges please go to Savills.co.uk/tenant-fees. For more detailed information read our applicant guide at savills.co.uk/applicant-guide.  
Hard copy available on request. . 20210512KAW

