



## Two bedroom apartment with outside space

**Warburton Street, Hackney, London, E8**

£500 pw (£2,166.67 pcm) plus fees apply, Unfurnished  
Available from 04.06.2021





- Well-configured space
- Balcony and communal terrace
- Video entry phone system
- Private bicycle storage
- Excellent Location

### Local Information

The property is just a 0.2 mile walk to London Fields park which features the Lido. London Fields station is to the rear of the development just 0.2 miles. There are direct bus route to the city, Liverpool Street station and the City of London which is just 2.1 miles away.

### About this property

A beautiful fourth floor, modern apartment with a generous living room, semi open-plan reception, two double bedrooms, two bathrooms and a south facing balcony.

Matcham Buildings is a landmark development offering 22 well designed and highly specified two and three bedroom apartments ideally positioned on Hackney's Mare Street; located in one of East London's most vibrant neighborhoods and desirable destinations.

### Furnishing

Unfurnished

### Local Authority

London Borough of Hackney  
Council Tax Band = D

### Energy Performance

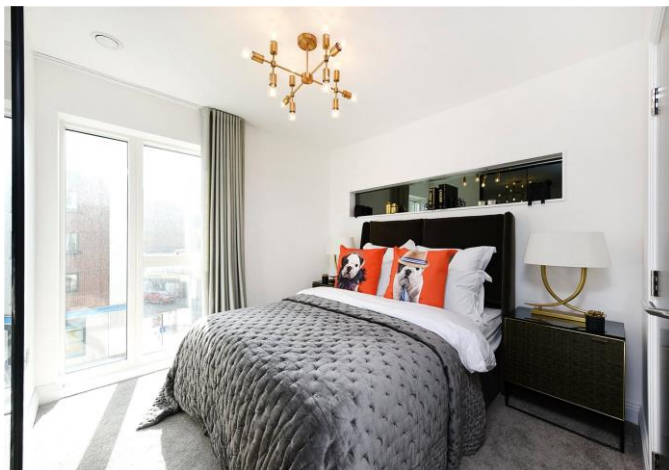
EPC Rating = B

### Viewing

All viewings will be accompanied and are strictly by prior arrangement through Savills Hackney Lettings Office.  
Telephone: +44 (0)20 3889 6177.









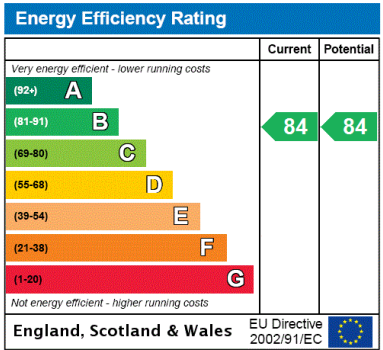
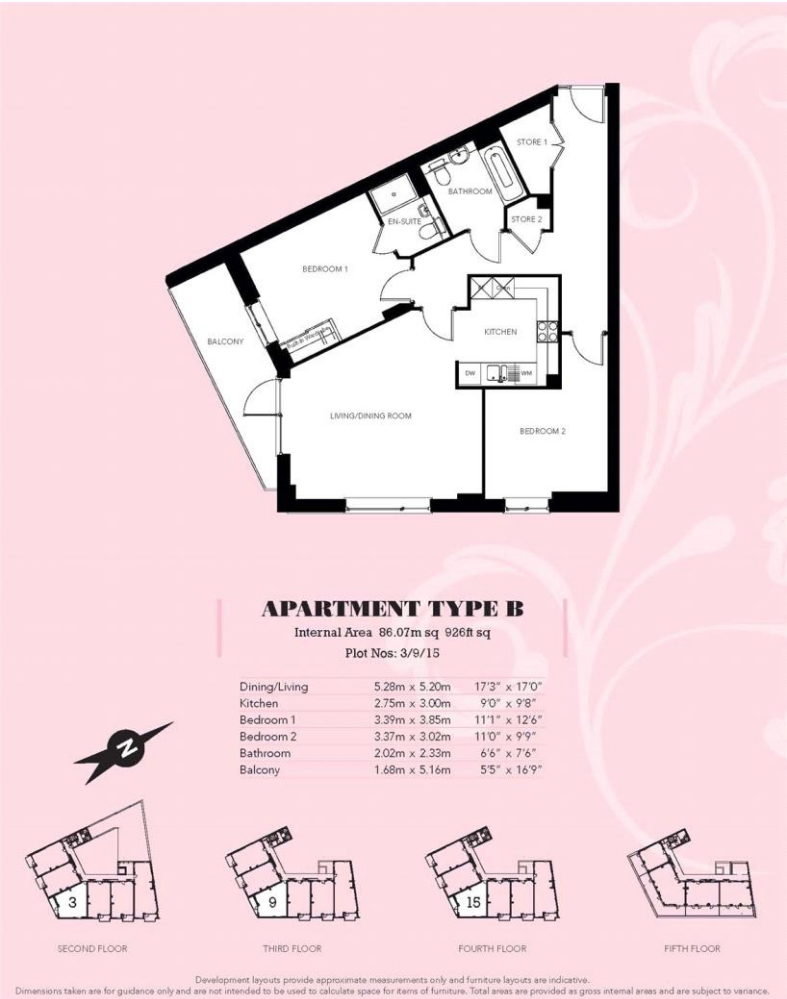
Warburton Street, Hackney, London, E8  
Gross Internal Area 926 sq ft, 86 m<sup>2</sup>



savills

savills.co.uk

Anthony Casingena  
Hackney Lettings  
+44 (0)20 3889 6177  
anthony.casingena@savills.com



**Important notice** Savills, their clients and any joint agents give notice that: 1. They are not authorised to make or give any representations or warranties in relation to the property either here or elsewhere, either on their own behalf or on behalf of their client or otherwise. They assume no responsibility for any statement that may be made in these particulars. These particulars do not form part of any offer or contract and must not be relied upon as statements or representations of fact. 2. Any areas, measurements or distances are approximate. The text, images and plans are for guidance only and are not necessarily comprehensive. It should not be assumed that the property has all necessary planning, building regulation or other consents and Savills have not tested any services, equipment or facilities. Prospective tenants must satisfy themselves by inspection or otherwise. Please note that the local area may be affected by aircraft noise, you should make your own enquiries regarding any noise within the area before you make any offer.

\*There are different rules and fees for different tenancy types. For details of our fees and charges please go to Savills.co.uk/tenant-fees. For more detailed information read our applicant guide at savills.co.uk/applicant-guide.  
Hard copy available on request. . 20210412KAW

