



A one bedroom apartment conveniently located within a gated development

Scholars Court, Chertsey Street, Guildford, Surrey, GU1

£1,250 pcm plus fees apply, Unfurnished
Available from 03.04.2021



- Secure gated development
- Open plan reception kitchen
- Large double bedroom with built in wardrobes
- Shower room
- Guildford town centre

Local Information

Scholars Court is a gated development of 34, 1 and 2 bedroom newly converted apartments and penthouses, situated close to Guildford's picturesque cobbled high street and approximately 0.5 miles from Guildford main line station.

About this property

A recently built apartment conveniently located within a gated development in Guildford town centre. This one bedroom apartment is located on the ground floor and boasts excellent features. Internally, the property has a bright kitchen/living room, double bedroom with built-in wardrobes, separate and shower room.

Furnishing

Unfurnished

Local Authority

Guildford Borough Council
Council Tax Band = C

Energy Performance

EPC Rating = B

Viewing

All viewings will be accompanied and are strictly by prior arrangement through Savills Guildford Lettings Office.
Telephone: +44 (0) 1483 796 830.

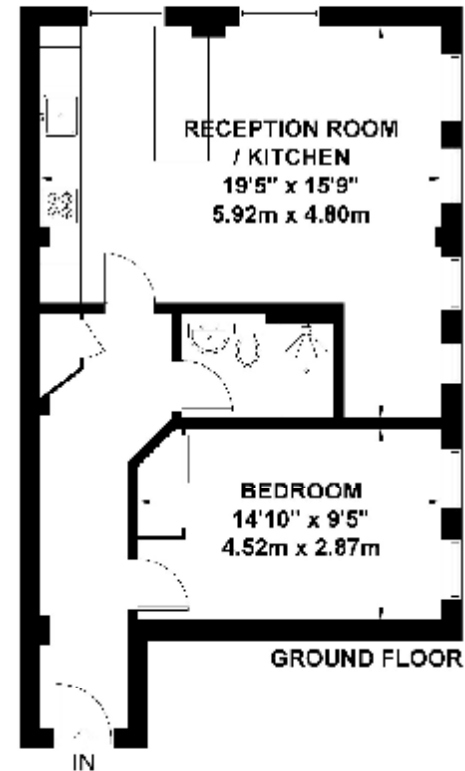




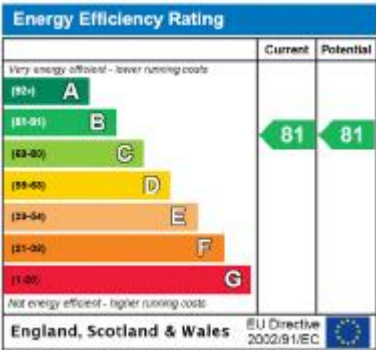
Scholars Court, Chertsey Street, Guildford, Surrey, GU1
Gross Internal Area 0 sq ft, m²

Stuart Small
Guildford Lettings
+44 (0) 1483 796 830
ssmall@savills.com

Chertsey Street, Guildford
Approximate Gross Internal Area = 54.6 sq m / 588 sq ft



Exposure House 3: 2020
www.exposure.house
Whilst every attempt has been made to ensure the accuracy of this floor plan, measurements of doors, windows and rooms are approximate and no responsibility is taken for any error or omission. This illustration is for identification purposes only. Measured and drawn accordance with RICS guidelines. Not drawn to scale, unless stated. Dimensions shown are to the nearest 5' and are to the points indicated by the arrow heads.



Important notice Savills, their clients and any joint agents give notice that: 1. They are not authorised to make or give any representations or warranties in relation to the property either here or elsewhere, either on their own behalf or on behalf of their client or otherwise. They assume no responsibility for any statement that may be made in these particulars. These particulars do not form part of any offer or contract and must not be relied upon as statements or representations of fact. 2. Any areas, measurements or distances are approximate. The text, images and plans are for guidance only and are not necessarily comprehensive. It should not be assumed that the property has all necessary planning, building regulation or other consents and Savills have not tested any services, equipment or facilities. Prospective tenants must satisfy themselves by inspection or otherwise. Please note that the local area may be affected by aircraft noise, you should make your own enquiries regarding any noise within the area before you make any offer.

*There are different rules and fees for different tenancy types. For details of our fees and charges please go to Savills.co.uk/tenant-fees. For more detailed information read our applicant guide at savills.co.uk/applicant-guide.
Hard copy available on request. . 20210225SMAL

