



Central Guildford living with fantastic access to Guildford High Street

Bury Fields House, Bury Fields, Guildford, Surrey, GU2

£1,150 pcm plus fees apply, Unfurnished
Available from 06.08.2021

savills

- Situated in a great spot for Guildford High Street
- Walking distance to the main line station
- Modern fixtures and fittings throughout
- Designated off street parking for one car
- Secure gated development

Local Information

Set within Guildford town centre conservation area the development is conveniently positioned in the centre of Guildford. On a quiet back street within close proximity to the canal and the bustling high street - the locality is rich in amenities, commercial and cultural attractions. Within a short walk you are immersed in Guildford's full and varied arts scene with a choice of galleries and theatres, including the highly regarded Yvonne Arnaud Theatre. Guildford's geographical position boasts unparalleled road links to London and the rest of the UK, with the added benefit of several international airports and ports within a short drive. Whilst being exceptionally connected to urban areas, the town sits in the heart of Surrey's idyllic countryside where both Surrey Hills and North Downs allow enjoyment of outdoor activities that the finest of British countryside has to offer.

About this property

A modern one bedroom luxury ground floor apartment in the heart of Guildford. The development is conveniently positioned close to Guildford High Street and close to the banks of the river Way and the beautiful National Trust land. The apartment also includes a private parking space. Perfectly positioned for commuting into

central London as the train station is located just 500 meters away, with direct link into Waterloo.

Furnishing

Unfurnished

Local Authority

Guildford Borough Council
Council Tax Band = C

Energy Performance

EPC Rating = C

Viewing

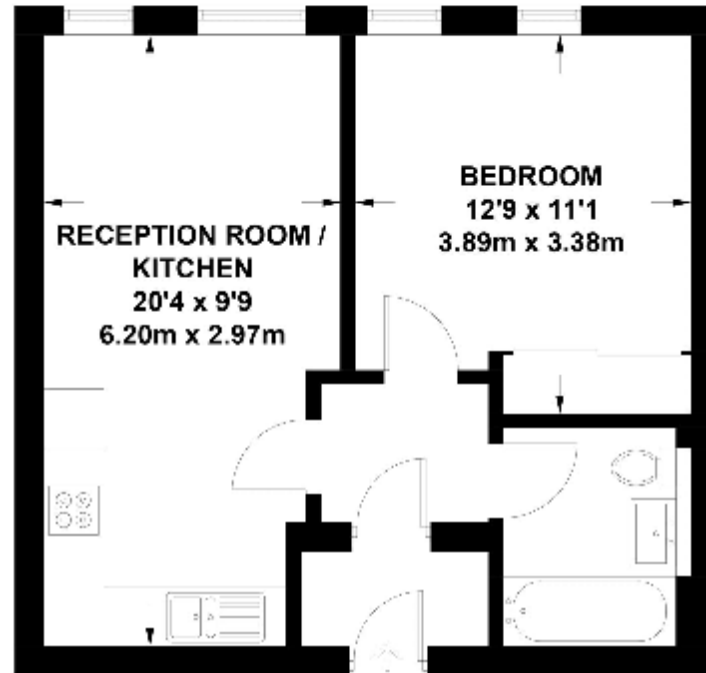
All viewings will be accompanied and are strictly by prior arrangement through Savills Guildford Lettings Office.
Telephone: +44 (0) 1483 796 830.





Bury Fields, Guildford

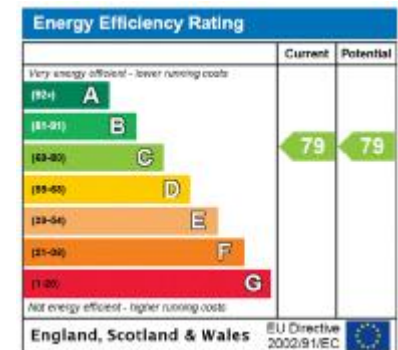
Approximate Gross Internal Area = 40.7 sq m / 438 sq ft



Ground Floor

Exposure House & 2018 (ID439419)
www.exposurehouse.co.uk

Whilst every attempt has been made to ensure the accuracy of this floor plan, measurements of doors, windows and rooms are approximate and no responsibility is taken for any error or omission. This illustration is for identification purposes only. Measured and drawn in accordance with RICS guidelines. Not drawn to scale, unless stated. Dimensions shown are to the nearest 3" and are to the points indicated by the arrow heads.



Important notice Savills, their clients and any joint agents give notice that: 1. They are not authorised to make or give any representations or warranties in relation to the property either here or elsewhere, either on their own behalf or on behalf of their client or otherwise. They assume no responsibility for any statement that may be made in these particulars. These particulars do not form part of any offer or contract and must not be relied upon as statements or representations of fact. 2. Any areas, measurements or distances are approximate. The text, images and plans are for guidance only and are not necessarily comprehensive. It should not be assumed that the property has all necessary planning, building regulation or other consents and Savills have not tested any services, equipment or facilities. Prospective tenants must satisfy themselves by inspection or otherwise. Please note that the local area may be affected by aircraft noise, you should make your own enquiries regarding any noise within the area before you make any offer.

*There are different rules and fees for different tenancy types. For details of our fees and charges please go to Savills.co.uk/tenant-fees. For more detailed information read our applicant guide at savills.co.uk/applicant-guide. Hard copy available on request. . 20210514SMAL

