



A two bedroom apartment located in the centre of Guildford

City Point, 67 Sydenham Road, Guildford, Surrey, GU1

£2,300 pcm plus fees apply, Unfurnished
Available from 04.09.2020

savills

High quality kitchen with Siemens fitted appliances • Principal bedroom with ensuite bathroom • Second bedroom with ensuite shower room • Allocated parking space • Entry phone system • Town centre location

About this property

An upper floor (with lift) split level two bedroom apartment located in an outstanding development of just 9 apartments in the very centre of Guildford.

Accommodation comprises: entrance hallway, family bathroom with shower and bath, two double bedrooms, both with fitted wardrobes and a private balcony, the principal bedroom with en-suite shower room. The secondary floor accessed via stairs leads to an open plan kitchen reception with newly integrated appliances, separate utility and a large terrace accessed via bi-folding doors, with far reaching views across Guildford.

Centrally located, this apartment epitomises the contemporary style of city dwelling with a high quality specification and basement parking as well as the convenience and exceptional facilities of its enviable location.

Furnishing

Unfurnished

Local Authority

Guildford
Council Tax Band = D

Energy Performance

EPC Rating = C

Viewing

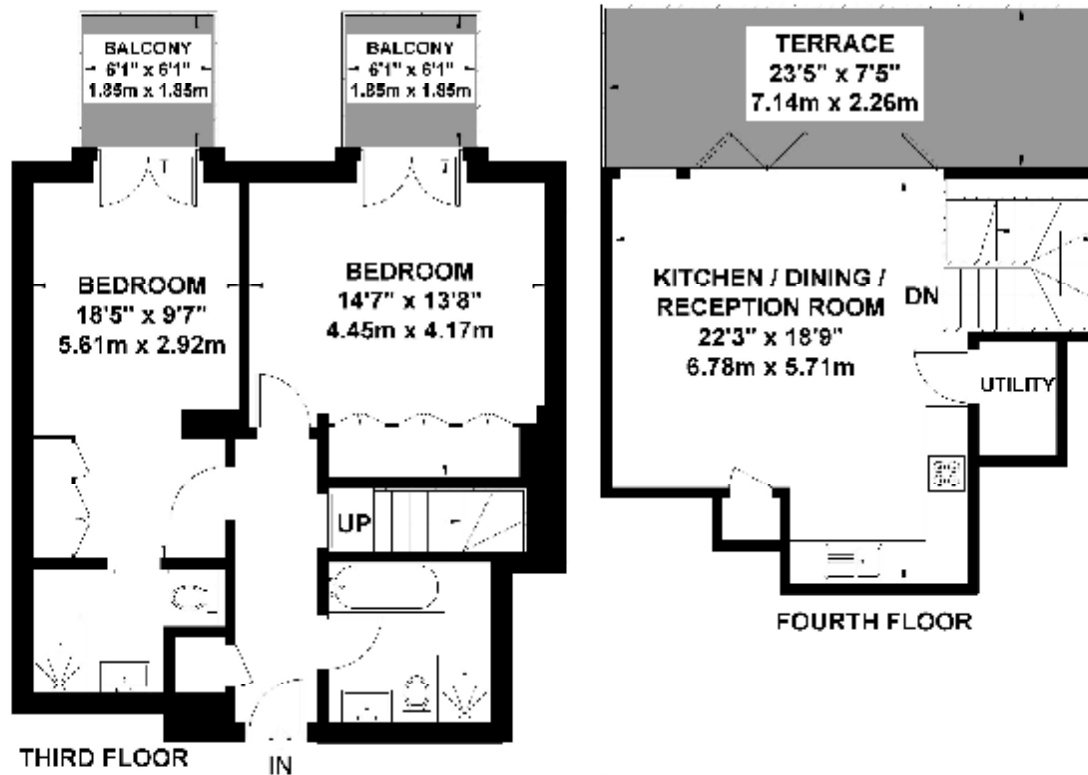
All viewings will be accompanied and are strictly by prior arrangement through Savills Guildford Lettings Office.
Telephone: +44 (0) 1483 796 830.





Sydenham Road, Guildford

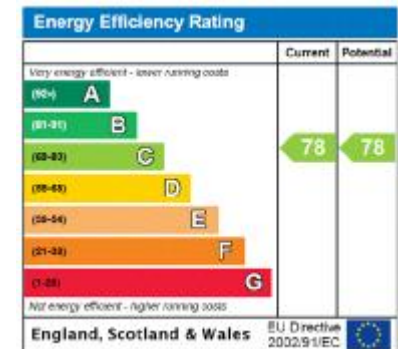
Approximate Gross Internal Area = 84.0 sq m / 904 sq ft



Exposure House A 2020

www.exposurehouse

Whilst every effort has been made to ensure the accuracy of this floor plan, measurements of doors, windows and rooms are approximate and no responsibility is taken for any error or omission. This floor plan is for information purposes only. Measured and drawn according to the RICS guidelines. Footings shown to scale. Dimensions shown to the nearest 1/2" and are to the points indicated by the arrow heads.



Important notice Savills, their clients and any joint agents give notice that: 1. They are not authorised to make or give any representations or warranties in relation to the property either here or elsewhere, either on their own behalf or on behalf of their client or otherwise. They assume no responsibility for any statement that may be made in these particulars. These particulars do not form part of any offer or contract and must not be relied upon as statements or representations of fact. 2. Any areas, measurements or distances are approximate. The text, images and plans are for guidance only and are not necessarily comprehensive. It should not be assumed that the property has all necessary planning, building regulation or other consents and Savills have not tested any services, equipment or facilities. Prospective tenants must satisfy themselves by inspection or otherwise. Please note that the local area may be affected by aircraft noise, you should make your own enquiries regarding any noise within the area before you make any offer.

*There are different rules and fees for different tenancy types. For details of our fees and charges please go to Savills.co.uk/tenant-fees. For more detailed information read our applicant guide at savills.co.uk/applicant-guide.

Hard copy available on request. . 20200908SMAL

