



Two quaint cottages, with a secluded garden area and parking.

Country Comfort Cottages, Rue Des Farras, Forest, GY8 0DX

Asking Price £650,000

savills



Two lovely self-contained cottages  
Parking for several vehicles  
A private garden area  
Situated in a picturesque rural location  
Ideal buy-to-let investment

---

Country Comfort Cottages consists of two semi-detached cottages, with separate entrances, and close to the local amenities.

The units each comprise of two double bedrooms, a kitchen/sitting room/diner, a bathroom and a cloakroom. They stand in the picturesque rural area of Forest, and include their own gardens and parking for multiple vehicles.

These properties would be an excellent investment property

#### Local Information

Country Comfort Cottages is situated in a beautiful rural location, which is just a short distance from the breathtaking south coast.

A regular bus route is available along Route de Farras. The school catchment area for the property is Forest Primary and Les Beaucamps High School.

#### Services and Notes

Mains water and electricity. Oil fired central heating. Cesspit drainage. We understand the property is of block construction. UPVC double glazing. TRP 178.

#### Directions

Travelling West along Rue Des Farras, the property is situated down a path on the left hand side. Perry's Guide Map Reference: Page 28 B3.

#### Tenure

Freehold

#### Viewing

All viewings will be accompanied and are strictly by prior arrangement through Savills Guernsey Office.  
Telephone: +44 (0) 1481 713 463.







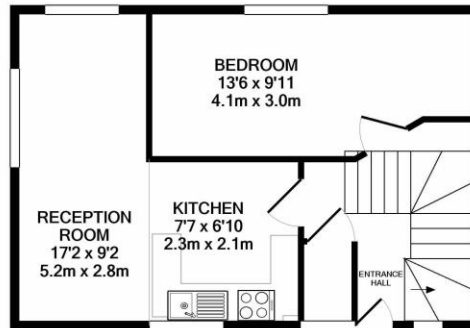
Country Comfort Cottages, Rue Des Farras, Forest, GY8 0DX  
Gross Internal Area 1916 sq ft, 178 m<sup>2</sup>



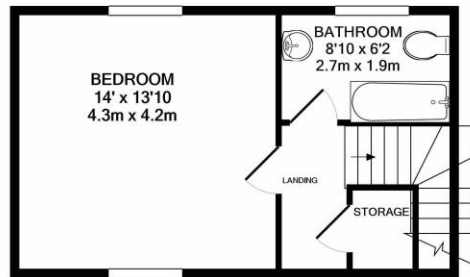
savills

savills.gg

**Maxine Bell**  
Guernsey  
**+44 (0) 1481 713 463**  
maxine.bell@savills.com



GROUND FLOOR



1ST FLOOR

Whilst every attempt has been made to ensure the accuracy of the floor plan contained here, measurements of doors, windows, rooms and any other items are approximate and no responsibility is taken for any error, omission, or mis-statement. This plan is for illustrative purposes only and should be used as such by any prospective purchaser. The services, systems and appliances shown have not been tested and no guarantee as to their operability or efficiency can be given.  
Made with Metropix ©2020

**Important notice** Savills, its clients and any joint agents give notice that 1: They are not authorised to make or give any representations or warranties in relation to the property either here or elsewhere, either on their own behalf or on behalf of their client or otherwise. They assume no responsibility for any statement that may be made in these particulars. These particulars do not form part of any offer or contract and must not be relied upon as statements or representations of fact. 2: Any areas, measurements or distances are approximate. The text, photographs and plans are for guidance only and are not necessarily comprehensive. It should not be assumed that the property has all necessary planning, building regulation or other consents and Savills have not tested any services, equipment or facilities. Purchasers must satisfy themselves by inspection or otherwise. 20200706ANHX

