



An imposing Georgian house with sunny terraced gardens.

Le Pont Renier, Ruettes Brayes, St Peter Port

Asking Price £2,950,000

OPEN MARKET

savills



Imposing Regency family home •
Beautiful proportions and elegant rooms •
Features a fully independent annexe •
Full height basement floor • Terraced
gardens with outdoor pool • Rural
outlooks over adjacent tree lined field

Local Information

A residential property categorised as Part A on Guernsey's Open Market Housing Register and available for occupation by those holding a British or European Economic Area passport.

About this property

A prominent and imposing Georgian house standing on the western approaches to St Peter Port and in close proximity to all its amenities. Standing above the road, the property enjoys some open views over a small adjacent valley with sloping pastures and tree lined boundaries.

The spacious accommodation has traditionally proportioned and elegant rooms which range over four floors; including a full height basement level and an independent annexe for family members or staff.



The walled gardens and grounds are a particular feature of the property and rise in a succession of south facing terraces that have been attractively laid out and incorporate a heated outdoor pool. A forecourt provides parking for a couple of cars, alongside garaging for three vehicles, while a driveway leads on to an upper parking and turning area.

Services and Notes

All mains services are connected to the property. Oil fired central heating. Wooden single glazing with internal secondary glazing. The property, together with the roadside railings, is Heritage listed.

Directions

Travelling out of Town up the Ruettes Brayes towards the Ville au Roi, the property is situated on the right hand side of the bend about 50 metres on from the junction with Colborne Road. Perry's Guide Map Reference: Page 25 E3.

Tenure

Freehold

Viewing

All viewings will be accompanied and are strictly by prior arrangement through Savills Guernsey Office. Telephone: +44 (0) 1481 713 463.

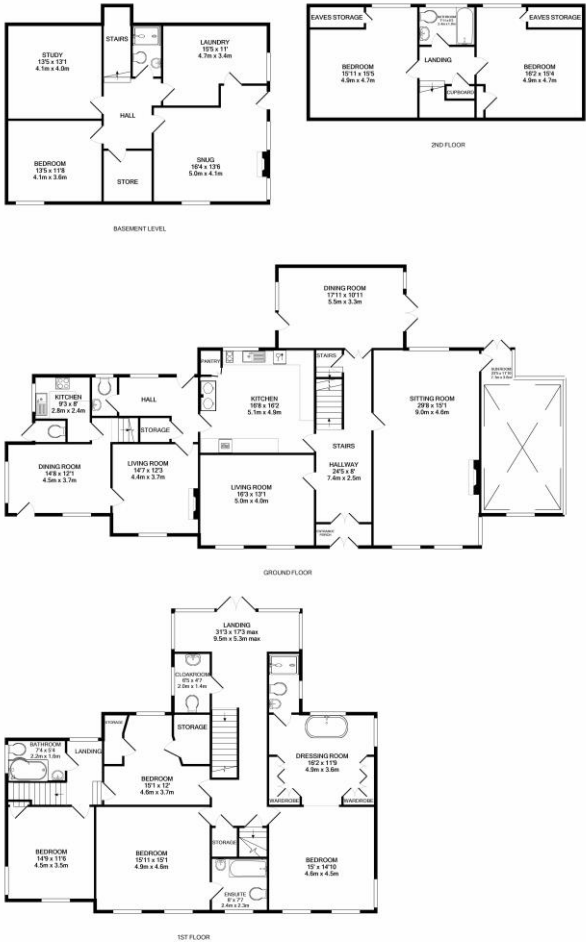




Le Pont Renier, Ruettes Brayes, St Peter Port, GY1
Gross Internal Area 7565 sq ft, 702.8 m²



Richard Fox
Guernsey
+44 (0) 1481 713 463
richard.fox@savills.com



Important notice Savills, its clients and any joint agents give notice that 1: They are not authorised to make or give any representations or warranties in relation to the property either here or elsewhere, either on their own behalf or on behalf of their client or otherwise. They assume no responsibility for any statement that may be made in these particulars. These particulars do not form part of any offer or contract and must not be relied upon as statements or representations of fact. 2: Any areas, measurements or distances are approximate. The text, photographs and plans are for guidance only and are not necessarily comprehensive. It should not be assumed that the property has all necessary planning, building regulation or other consents and Savills have not tested any services, equipment or facilities. Purchasers must satisfy themselves by inspection or otherwise. 20191122CETB

