



A VERY LARGE AND RECENTLY MAINTAINED AREA OF GLASS, TOWARD THE NORTH OF THE ISLAND.

BIRKLANDS, LES CANUS, ST SAMPSON, GY2 4UJ

Guide Price £235,000

Vinery site of approximately one acre • Very well maintained and in good order throughout • Additional external amenity space • Situated in a good position in the North of the Island • Possibility to create another access

Description

A very large and recently maintained area of glass, toward the north of the island. Formerly part of a much larger area, this vinery is now ideal for growing and needs little by way of alteration.

The total area of the glasshouse is approximately 1 acre, with additional external areas to one side which could be best utilised with the creation of another access.

Services are available in the road.

Directions

Turning into Les Canus from Marette Road, the glass is on the left hand side, clearly visible from the road. Perry's Guide Map Reference: Page 22 D5.

Tenure

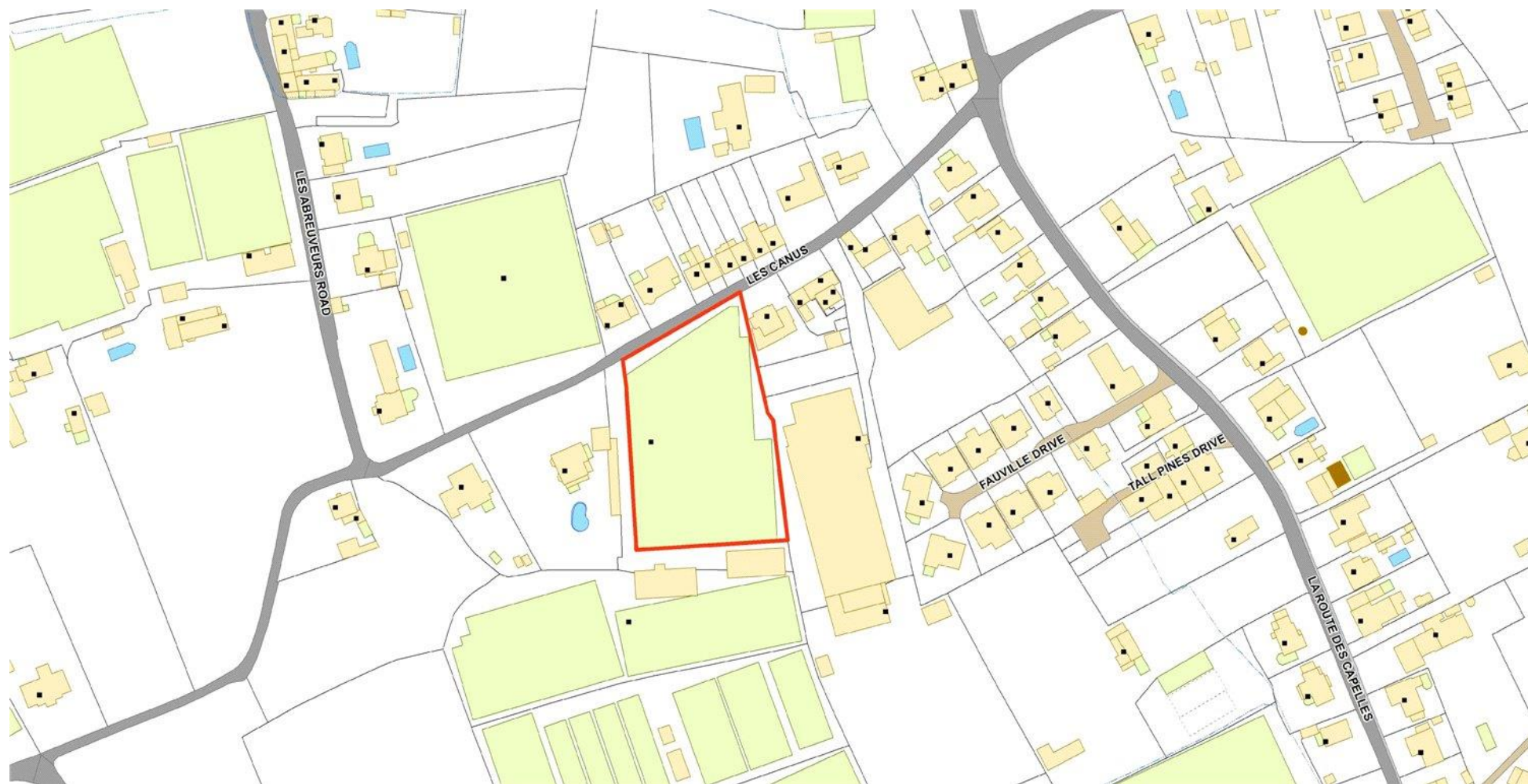
To be advised

Guernsey

+44 (0) 1481 713 463

savills.gg

savills



Savills, their clients and any joint agents give notice that: 1. They are not authorised to make or give any representations or warranties in relation to the property either here or elsewhere, either on their own behalf or on behalf of their client or otherwise. They assume no responsibility for any statement that may be made in these particulars. These particulars do not form part of any offer or contract and must not be relied upon as statements or representations of fact. 2. Any areas, measurements or distances are approximate. The text, images and plans are for guidance only and are not necessarily comprehensive. It should not be assumed that the property has all necessary planning, building regulation or other consents and Savills have not tested any services, equipment or facilities. Purchasers must satisfy themselves by inspection or otherwise.