



A newly converted maisonette within a gated development

Apt 6 St Martins Court, Rue Maze, St Martins, GY4 6LL

£2,750 pcm, Unfurnished
Available immediately



Modern apartment • Immaculate Condition • Garage and parking • Enclosed Garden • Close to St Martin's village

The accommodation features two reception rooms, a kitchen and breakfast room, a study or fourth bedroom, two en suite bedrooms, a third bedroom, a family bathroom and a shower room.

As well as private, designated parking, the property also has a large single garage, with a separate utility at one end, a large roof storage space and an enclosed garden at the rear.

The fixtures, fittings and soft furnishing are all of a good quality and the property represents an excellent opportunity for the purchaser to buy a new home in immaculate, ready to move in condition.

Useful info: Mains Electricity, Water and Drainage. Oil Fired Central Heating.

Additional costs: electricity, water, telephone, TV licence, parochial/refuse rates & annual waste charge.

Regret: Strictly no smokers/children/pets.

Deposit: the equivalent to three months' rent.

Appliances include :The AEG integral freezer, AEG integral fridge, AEG integral dishwasher, AEG induction hob, AEG extractor canopy, AEG cooker and AEG Micromat Duo.

Local Information

A residential property categorised as Part A on Guernsey's Open Market Housing Register and available for occupation by those holding a British or European Economic Area passport.

Directions: Perry's reference: Page 30 C1 Travelling along Rue Maze, towards the traffic lights. St Martin's Court is located on the left hand side, before the turning into Longue Rue.

Viewing

All viewings will be accompanied and are strictly by prior arrangement through Savills Guernsey Office.
Telephone: +44 (0) 1481 713 463.

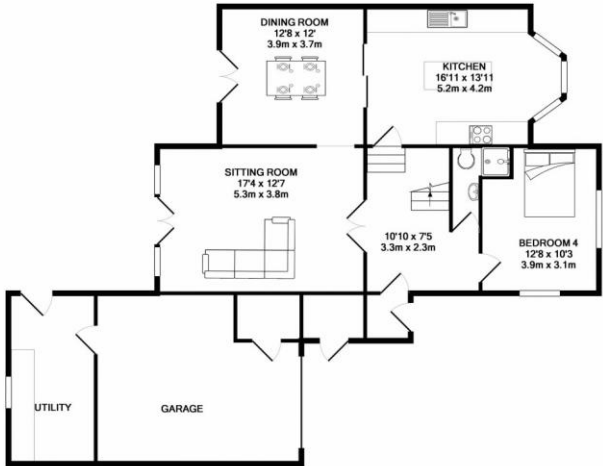
Apt 6 St Martins Court, Rue Maze, St Martins, GY4 6LL



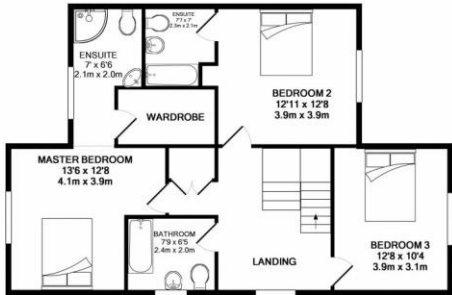
savills

savills.gg

Maxine Bell
Guernsey
+44 (0) 1481 713 463
maxine.bell@savills.com



GROUND FLOOR



1ST FLOOR

Whilst every attempt has been made to ensure the accuracy of the floor plan contained here, measurements of doors, windows, rooms and any other items are approximate and no responsibility is taken for any error, omission, or mis-statement. This plan is for illustrative purposes only and should be used as such for any prospective purchaser. The services, systems and appliances shown have not been tested and no guarantee as to their operability or efficiency can be given.
Made with Metropix (2019)

Important notice Savills, their clients and any joint agents give notice that: 1. They are not authorised to make or give any representations or warranties in relation to the property either here or elsewhere, either on their own behalf or on behalf of their client or otherwise. They assume no responsibility for any statement that may be made in these particulars. These particulars do not form part of any offer or contract and must not be relied upon as statements or representations of fact. 2. Any areas, measurements or distances are approximate. The text, images and plans are for guidance only and are not necessarily comprehensive. It should not be assumed that the property has all necessary planning, building regulation or other consents and Savills have not tested any services, equipment or facilities. Prospective tenants must satisfy themselves by inspection or otherwise. Please note that the local area may be affected by aircraft noise, you should make your own enquiries regarding any noise within the area before you make any offer.

*There are different rules and fees for different tenancy types. For details of our fees and charges to go to Savills.co.uk/tenant-fees. For more detailed information read our applicant guide at savills.co.uk/applicant-guide.
Hard copy available on request. . 20190924HOBK

