



A smart top floor apartment in central St Peter Port.

Apartment 4 Maple Place, Vauvert, St Peter Port, GY1 1NA

Asking Price £245,000



Local Information

4 Maple Place is situated within close distance of St Peter Port town centre with amenities including shops, cafes, restaurants and supermarkets all on its doorstep.

A main bus route is available nearby from Trinity Square.

The school catchment area for the property is Vauvert Primary and La Mare De Carteret High School.

We are delighted to offer this beautifully presented third floor property, set within a modern development of four apartments.

Fitted to a very high standard throughout, this stylish apartment benefits from two bedrooms, a bathroom, open plan living area, with a stylish kitchen.

Currently tenanted with an income of £12,000 per annum, this is an excellent opportunity for an investor seeking a modern apartment, with a low service charge, but equally would suit anyone looking for a town apartment as a first home.

Services & Notes

Mains water, electricity and drainage. Electric heating. UPVC double glazing. The property is of cavity construction.

Directions

Travelling up Vauvert Road from Trinity Square, the property is last on the left before the filter leading to George Street. Perry's Guide Map Reference: Page 25 F1.

Viewing

All viewings will be accompanied and are strictly by prior arrangement through Savills Guernsey Office. Telephone: +44 (0) 1481 713 463.

Apartment 4 Maple Place, Vauvert, St Peter Port, GY1 1NA

Gross Internal Area 947 sq ft, 88 m²



savills

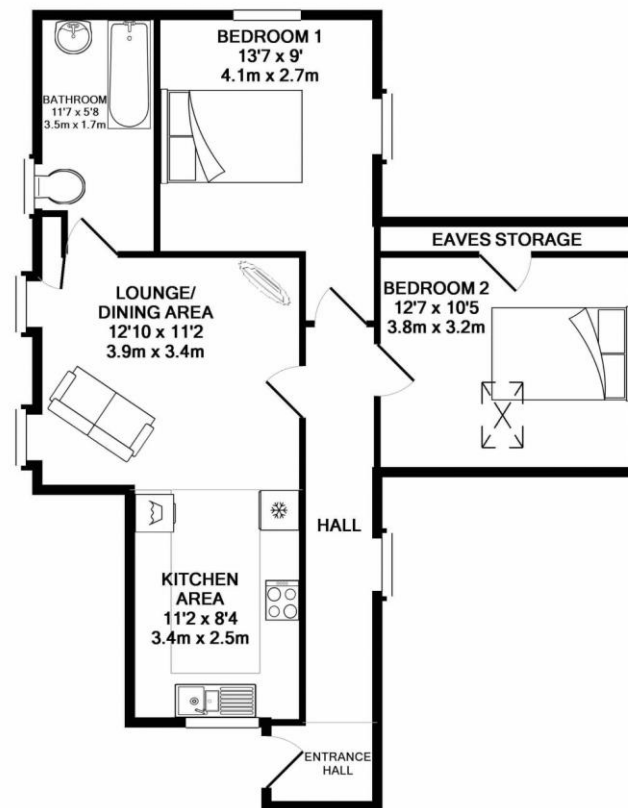
savills.gg

Stuart Leslie

Guernsey

+44 (0) 1481 713 463

stuart.leslie@savills.com



Whilst every attempt has been made to ensure the accuracy of the floor plan contained here, measurements of doors, windows, rooms and any other items are approximate and no responsibility is taken for any error, omission, or mis-statement. This plan is for illustrative purposes only and should be used as such by any prospective purchaser. The services, systems and appliances shown have not been tested and no guarantee as to their operability or efficiency can be given.
Made with Metropix ©2019

Important notice Savills, its clients and any joint agents give notice that 1: They are not authorised to make or give any representations or warranties in relation to the property either here or elsewhere, either on their own behalf or on behalf of their client or otherwise. They assume no responsibility for any statement that may be made in these particulars. These particulars do not form part of any offer or contract and must not be relied upon as statements or representations of fact. 2: Any areas, measurements or distances are approximate. The text, photographs and plans are for guidance only and are not necessarily comprehensive. It should not be assumed that the property has all necessary planning, building regulation or other consents and Savills have not tested any services, equipment or facilities. Purchasers must satisfy themselves by inspection or otherwise. 20191118ANHX

