



A FLEXIBLE, REVERSE PLAN HOME STANDING ON GUERNSEY'S WESTERN COASTLINE

LA BALISE, ROUTE DU PICQUEREL, VALE, GUERNSEY

Asking Price £777,000

savills

ENJOYING PANORAMIC SEA VIEWS OVER THE OLD FISHING ANCHORAGES IN GRAND HAVRE BAY

Computer Generated Image for Representational
Purposes • Current Plans Show a House with 4
Bedroom Suites • Reverse Plan with Master
Suite at 1st Floor Level • Sea Views over Grande
Havre • Good Garden and Parking

0 Bedrooms • 0 Bathrooms • 0 Receptions

Situation

A residential property categorised as Part A on Guernsey's Open Market Housing Register and available for occupation by those holding a British or European Economic Area passport

Description

A flexible, reverse plan home standing on Guernsey's western coastline and enjoying panoramic sea views over the old fishing anchorages in Grand Havre Bay. A large single storey wing provides space for a workshop/studio or additional accommodation.

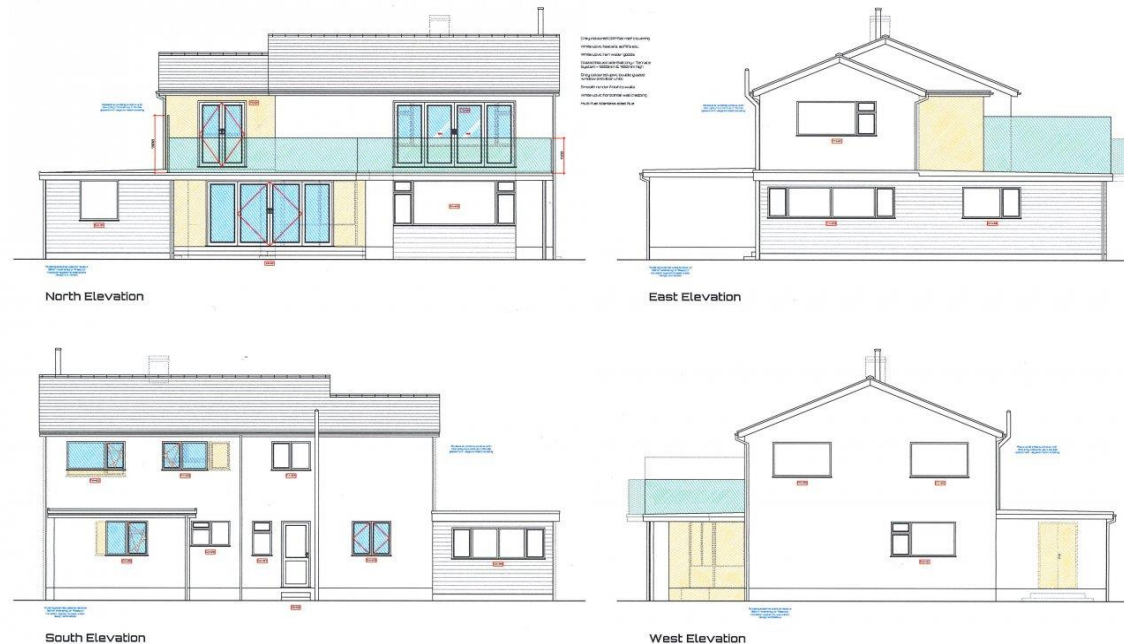
The house has been stripped out and should now be considered a redevelopment opportunity which, subject to planning, could result in a very desirable beach side home with great outlooks. Apart from the obvious attraction of the proximity of the bay opposite, there's an M&S food hall just nearby, as well as a couple of restaurants and the Rousse beach café for crab sandwiches and homemade food.

Directions

Perry's Guide Map Reference: Page 33 G2. Driving North along the coast road past the Houmet Tavern, the property is the third one on the right hand side after the junction with Le Houmet Lane.

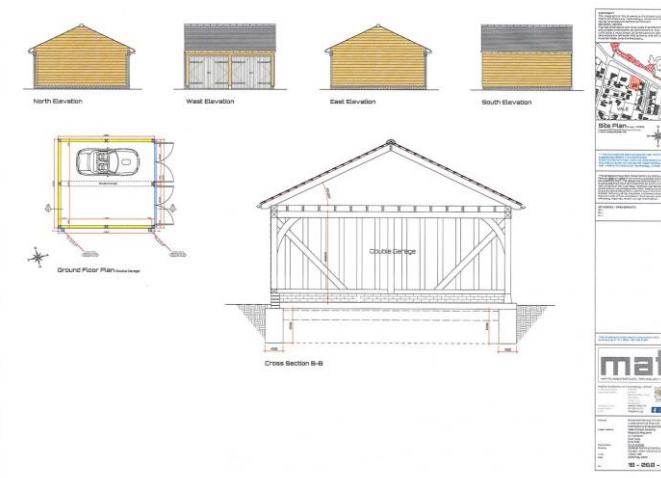
Viewing

Strictly by appointment with Savills.



mat
MATTHEW ARCHITECTURAL TECHNOLOGY LTD.
Architects & Planners
10-12, The Arcade, St. Peter, Guernsey, GY1 1AA
Tel: 01481 734444
Fax: 01481 734445
Email: info@matarchitects.com
www.matarchitects.com

18 - 058 - 04





FLOORPLANS

Gross internal area: 2819 sq ft, 261.9 m²

Guernsey
Richard Fox
richard.fox@savills.com
+44 (0) 1481 713 463

savills.gg

Savills, their clients and any joint agents give notice that: 1. They are not authorised to make or give any representations or warranties in relation to the property either here or elsewhere, either on their own behalf or on behalf of their client or otherwise. They assume no responsibility for any statement that may be made in these particulars. These particulars do not form part of any offer or contract and must not be relied upon as statements or representations of fact. 2. Any areas, measurements or distances are approximate. The text, images and plans are for guidance only and are not necessarily comprehensive. It should not be assumed that the property has all necessary planning, building regulation or other consents and Savills have not tested any services, equipment or facilities. Purchasers must satisfy themselves by inspection or otherwise. 20190701ANHX