



## A CONTEMPORARY DESIGN PENTHOUSE APARTMENT

---

APARTMENT 13, TUDOR HOUSE, LE BORDAGE, ST PETER PORT, GUERNSEY

**Asking Price £1,350,000**





# 1

## HIGH QUALITY, SPACIOUS ACCOMMODATION

---

Purpose Built Penthouse • Three Bedroom  
Duplex • Contemporary Finishes • Rooftop and  
Sea Views • Underground Parking for Two Cars •  
Currently tenanted until Sept 2018

3 Bedrooms • 2 Bathrooms • 1 Receptions

---

### Description

A contemporary design penthouse apartment situated within the top two floors of the Tudor House development, close to the market buildings and the centre of Town. The property offers high quality, spacious accommodation which includes a shared enclosed courtyard and a private balcony from where stunning rooftop and sea views can be enjoyed.

The top floor comprises an open plan living space with a loft 'feel' and a sliding patio door taking you out to the sun deck. The three bedrooms and two bathroom, on en suite, on the lower floor are arranged around a well proportioned entrance hall.

The apartment is completed by two secure underground parking spaces which are accessed by staircase or lift.

### Directions

Perry's Guide Map Reference: Page 5 J9 The apartments are accessed by vehicle off Le Bordage with a gated ramp leading down to the underground parking. The main pedestrian entrance is off Mill Street where an archway leads through to a sheltered porch and a secure entry system.

### Viewing

Strictly by appointment with Savills.

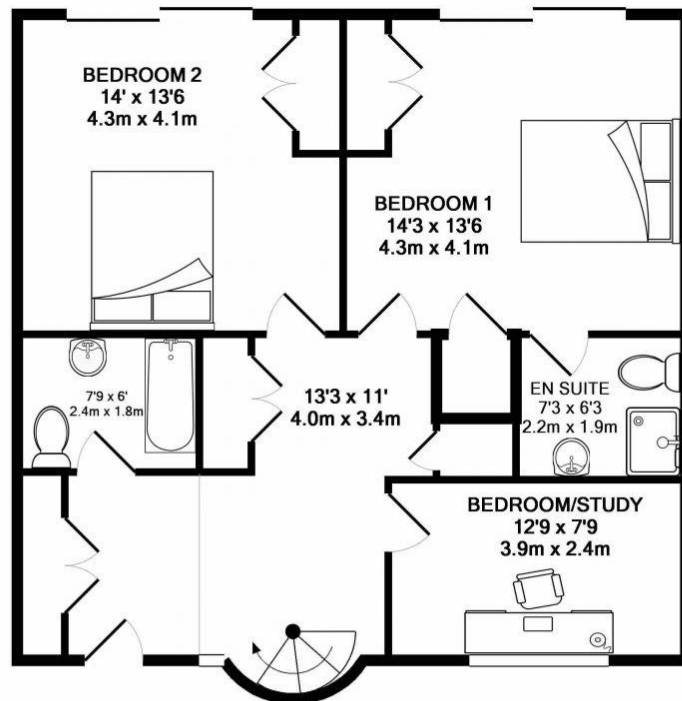




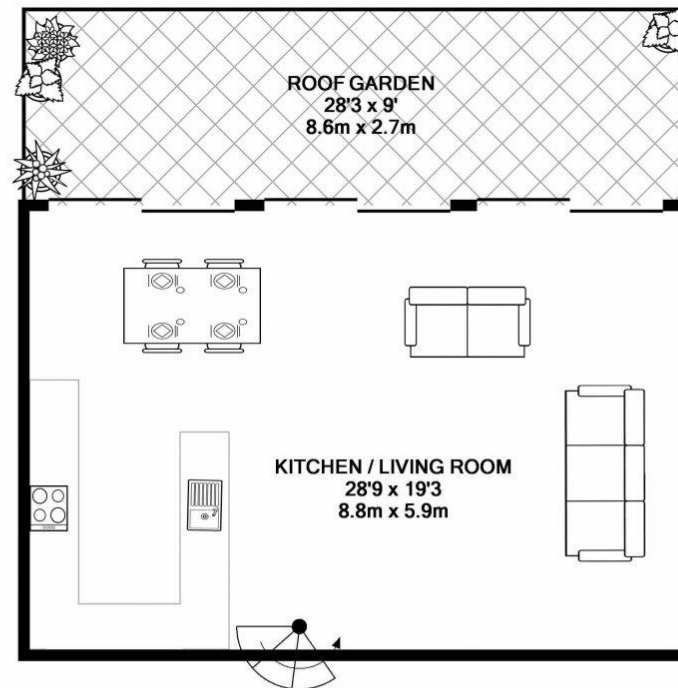


## FLOORPLANS

Gross internal area: 1679 sq ft, 156 m<sup>2</sup>



GROUND FLOOR



1ST FLOOR

Whilst every attempt has been made to ensure the accuracy of the floor plan contained here, measurements of doors, windows, rooms and any other items are approximate and no responsibility is taken for any error, omission, or mis-statement. This plan is for illustrative purposes only and should be used as such by any prospective purchaser. The services, systems and appliances shown have not been tested and no guarantee as to their operability or efficiency can be given  
Made with Metropix ©2019

**Guernsey**  
Richard Fox  
richard.fox@savills.com  
**+44 (0) 1481 713 463**

**savills.gg**

Savills, their clients and any joint agents give notice that: 1. They are not authorised to make or give any representations or warranties in relation to the property either here or elsewhere, either on their own behalf or on behalf of their client or otherwise. They assume no responsibility for any statement that may be made in these particulars. These particulars do not form part of any offer or contract and must not be relied upon as statements or representations of fact. 2. Any areas, measurements or distances are approximate. The text, images and plans are for guidance only and are not necessarily comprehensive. It should not be assumed that the property has all necessary planning, building regulation or other consents and Savills have not tested any services, equipment or facilities. Purchasers must satisfy themselves by inspection or otherwise. 20190702ANHX