



A remarkable family home on high ground, standing back from the island's west coast.

**Sartoria, La Vieille Rue, St Saviour, GY7 9NH**

Asking Price £3,450,000





**Substantial Luxury Home • Excellently Presented •  
Sea and Coastal Views • Extensive Accommodation  
• High Specification & Finishes • Indoor and Outdoor  
Pools**

#### **Local Information**

A residential property categorised as Part A on Guernsey's Open Market Housing Register and available for occupation by those holding a British or European Economic Area passport.

#### **About this property**

A remarkable family home situated on high ground and standing back from the island's west coast - well placed to take full advantage of both stunning sunsets and far reaching views over Perelle Bay.

Substantially built and carefully fitted out to a high specification, this spacious property is immaculately presented and offers almost unlimited, well-proportioned accommodation which includes a full health and hospitality suite, a large swim spa and guest rooms.

Sitting in rural surroundings, the house is complimented by beautiful and well-tended gardens with numerous viewpoints and an outdoor pool area.

#### **Services and Notes**

Mains water and electricity.  
Cesspool drainage.

To include; all fitted carpets, curtains and blinds as hung, and fitted light fittings. Appliances include; Britannia seven burner gas cooker with two electric ovens, Neff dishwasher, Neff fridge, Neff Microwave, Hotpoint washing machine, Hotpoint tumble dryer.

#### **Directions**

The property is situated on the right hand side about halfway down from the junction with the Frie Baton. Perry's Guide Map Reference: Page 21 E1.

#### **Tenure**

Freehold

#### **Viewing**

All viewings will be accompanied and are strictly by prior arrangement through Savills Guernsey Office.  
Telephone: +44 (0) 1481 713 463.







Sartoria, La Vieille Rue, St Saviour, GY7 9NH

Gross Internal Area 12335 sq ft, 1146 m<sup>2</sup>

Guernsey

+44 (0) 1481 713 463

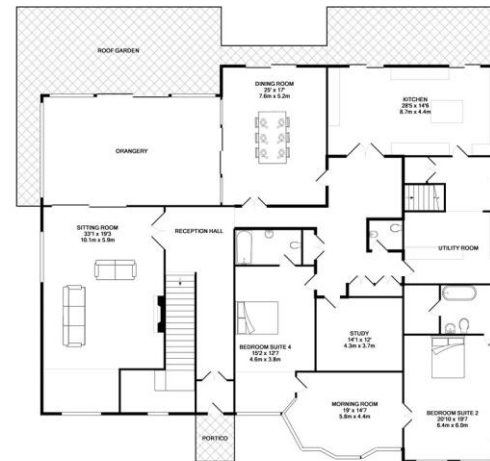


savills

savills.gg



GARDEN FLOOR



GROUND FLOOR

Information shown has been made available to the property of the floor plan measurement. The floor plan is a representation of the property and is not a guarantee of the property. The floor plan is a representation of the property and is not a guarantee of the property. The floor plan is a representation of the property and is not a guarantee of the property.

**Important notice** Savills, its clients and any joint agents give notice that 1: They are not authorised to make or give any representations or warranties in relation to the property either here or elsewhere, either on their own behalf or on behalf of their client or otherwise. They assume no responsibility for any statement that may be made in these particulars. These particulars do not form part of any offer or contract and must not be relied upon as statements or representations of fact. 2: Any areas, measurements or distances are approximate. The text, photographs and plans are for guidance only and are not necessarily comprehensive. It should not be assumed that the property has all necessary planning, building regulation or other consents and Savills have not tested any services, equipment or facilities. Purchasers must satisfy themselves by inspection or otherwise. 20200116CETB

