



A substantial property situated on a plot of approximately five acres.

Tudor Lodge Farm, Forest Road, Forest, GY8 8OA

Asking Price £1,695,000





Substantial farmhouse with seven bedrooms, all ensuite • Attached two bedroom cottage • Situated on a plot of approximately five acres • Numerous outbuildings including a garage, barns and kennels • Situated in a lovely position with rural and sea views

Local Information

Tudor Lodge Farm is situated in a central location in the popular parish of the Forest, with amenities including Forest Stores, La Trelade Hotel and the shopping facilities in St Martins Village just a short distance away.

A regular bus route is available along Forest Road.

The school catchment area for the property is Forest Primary and Les Beaucamps High School.

About this property

A unique opportunity to acquire a traditional Guernsey farmhouse situated in a good location in the parish of Forest.

Occupying a site of approximately five acres, the property comprises a substantial seven bedroom house all with ensuite bathrooms, generous reception rooms, and an attached spacious two bedroom cottage.

There are numerous outbuildings consisting of a detached garage, two barns, a cattery, kennels, aviary, stables, pig sties and in addition there are beautiful mature grounds with linked pathways leading to the paddocks, fields and valley beyond.

Overall a very exciting property with plenty of scope, ideal for a large family with animals.

Services and Notes

Mains water, electricity and drainage. Oil fired central heating. UPVC double glazing. TRP 885.

Including the fitted carpets, the curtains and blinds as hung, some light fittings. Appliances include: MAIN HOUSE; Bosch four ring hob, Blue oil fired Aga, Bosch dishwasher, Hotpoint freezer, Bosch washing machine, Servis tumble dryer. THE COTTAGE: Black Rayburn stove, Neff oven with matching hob and extractor fan over, Stainless steel microwave, Slim line dishwasher, Integrated fridge/freezer.

Tenure

Freehold

Directions

Heading along Forest Road, the property is located on the left hand side before Le Chene Traffic Lights. Perry's Guide Map Reference: Page 29 F2.

Viewing

All viewings will be accompanied and are strictly by prior arrangement through Savills Guernsey Office.

Telephone:

+44 (0) 1481 713 463.







Tudor Lodge Farm, Forest Road, Forest, GY8 8OA

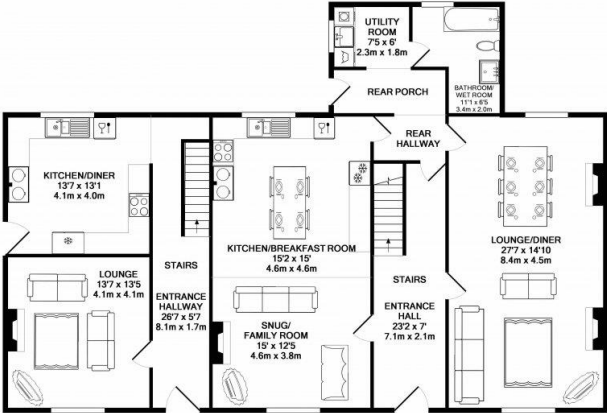
Gross Internal Area 9526 sq ft, 885 m²

Guernsey

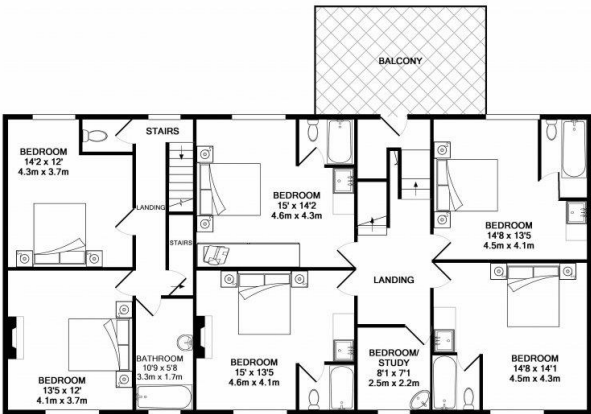
+44 (0) 1481 713 463



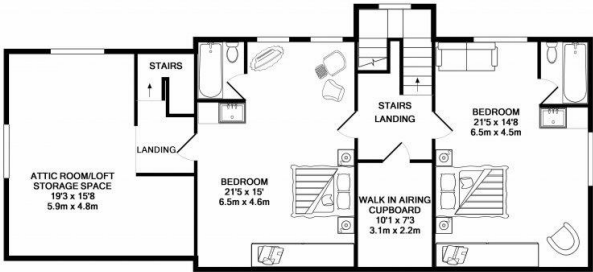
Whilst every attempt has been made to ensure the accuracy of the floor plan contained here, measurements of doors, windows, rooms and any other items are approximate and no responsibility is taken for any error, omission, or mis-statement. This plan is for illustrative purposes only and should be used as such by any prospective purchaser. The services, systems and appliances shown have not been tested and no guarantee as to their operability or efficiency can be given.
Made with Metagor 100719



GROUND FLOOR



1ST FLOOR



2ND FLOOR

Important notice Savills, its clients and any joint agents give notice that 1: They are not authorised to make or give any representations or warranties in relation to the property either here or elsewhere, either on their own behalf or on behalf of their client or otherwise. They assume no responsibility for any statement that may be made in these particulars. These particulars do not form part of any offer or contract and must not be relied upon as statements or representations of fact. 2: Any areas, measurements or distances are approximate. The text, photographs and plans are for guidance only and are not necessarily comprehensive. It should not be assumed that the property has all necessary planning, building regulation or other consents and Savills have not tested any services, equipment or facilities. Purchasers must satisfy themselves by inspection or otherwise.

