



Second floor apartment offering generous accommodation throughout.

Apartment 4 St Martins Court, Rue Maze, St Martin, GY4 6LL

Asking Price £389,000





Second floor apartment offering generous accommodation throughout • Forming part of a small development • Two allocated parking spaces with further visitor parking available • Benefitting for the use of communal garden area • Situated in a sought after location in St Martins

Local Information

St Martins Court is situated in a fantastic convenient location just a short distance from the amenities of St Martins Village, while lovely restaurants and bars are close by such as Les Douvres, La Barbarie and The Captains.

A regular bus route is available along La Rue Maze.

The school catchment area for the property is St Martins Primary and Les Beaucamps High School.

About this property

This lovely second floor apartment forms part of a small development in the heart of St Martins.

Finished to a high standard throughout, the property offers generous accommodation comprising entrance hallway, living room opening through to a fully fitted kitchen and two double bedrooms, both of which are en suite.

The apartment further benefits from allocated parking for two vehicles, with further visitor parking also available along with the use of the lovely communal gardens.

An ideal low maintenance home or buy-to-let investment.

Tenure

Freehold

Services and Notes

Mains water, electricity and drainage. Electric Heatstore heating and hot water, with electric underfloor heating in both bathrooms. UPVC double glazing. We understand the property is of traditional construction. TRP 105.

Directions

Travelling along Rue Maze, towards the traffic lights. St Martins Court is located on the left hand side, before the turning into Longue Rue. Perry's Guide Map Reference: Page 30 C1.

Viewing

All viewings will be accompanied and are strictly by prior arrangement through Savills Guernsey Office.

Telephone:

+44 (0) 1481 713 463.







Apartment 4 St Martins Court, Rue Maze, St Martin, GY4 6LL

Gross Internal Area 1130 sq ft, 105 m²

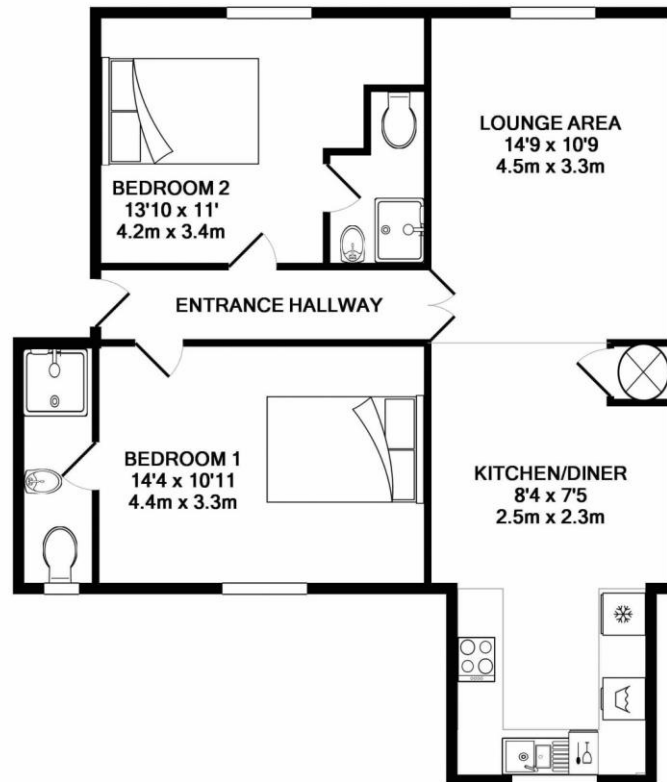
Guernsey

+44 (0) 1481 713 463



savills

savills.co.uk



Whilst every attempt has been made to ensure the accuracy of the floor plan contained here, measurements of doors, windows, rooms and any other items are approximate and no responsibility is taken for any error, omission, or mis-statement. This plan is for illustrative purposes only and should be used as such by any prospective purchaser. The services, systems and appliances shown have not been tested and no guarantee as to their operability or efficiency can be given.
Made with Metropix ©2019

Important Notice Savills, its clients and any joint agents give notice that 1: They are not authorised to make or give any representations or warranties in relation to the property either here or elsewhere, either on their own behalf or on behalf of their client or otherwise. They assume no responsibility for any statement that may be made in these particulars. These particulars do not form part of any offer or contract and must not be relied upon as statements or representations of fact. 2: Any areas, measurements or distances are approximate. The text, photographs and plans are for guidance only and are not necessarily comprehensive. It should not be assumed that the property has all necessary planning, building regulation or other consents and Savills have not tested any services, equipment or facilities. Purchasers must satisfy themselves by inspection or otherwise.

