



OFFERING LOVELY RURAL AND COASTAL VIEWS

L'EQUELLE, ROUTE DE L'ECLLET, ST PETER, GUERNSEY

Price Reduced to £1,100,000



AN OPPORTUNITY TO ACQUIRE A UNIQUE PROPERTY

Wonderful 6 Bed Detached Home • Superb Rural Location • Private Sunny Gardens + Field • Double Garage + Ample Parking • TRP 353

6 Bedrooms • 3 Bathrooms • 2 Receptions

Description

This superb detached family home is situated in a gorgeous position in St Peter's, offering lovely rural and coastal views towards the Hanois lighthouse.

The property has been comprehensively renovated and extended to offer six bedrooms, excellent open plan living and highly flexible accommodation, with a focal point for the property being the stunning kitchen/diner/living area with doors opening onto a large south facing patio. On the first and second floors are five bedrooms, including a fantastic master suite with beautiful sea views.

Externally, the property benefits from a double garage, ample parking, sunny gardens and field, the whole site measuring just over an acre.

Overall, an opportunity to acquire a unique property in an amazing location, viewing is highly recommended.

Directions

Perry's Guide Map Reference: Page 21 F4. Travelling down Route du Longfrie with the Longfrie on your left, go through the filter and take the third right in to Rue de L'Eclat and the property is on the right hand side past the fields.

Viewing

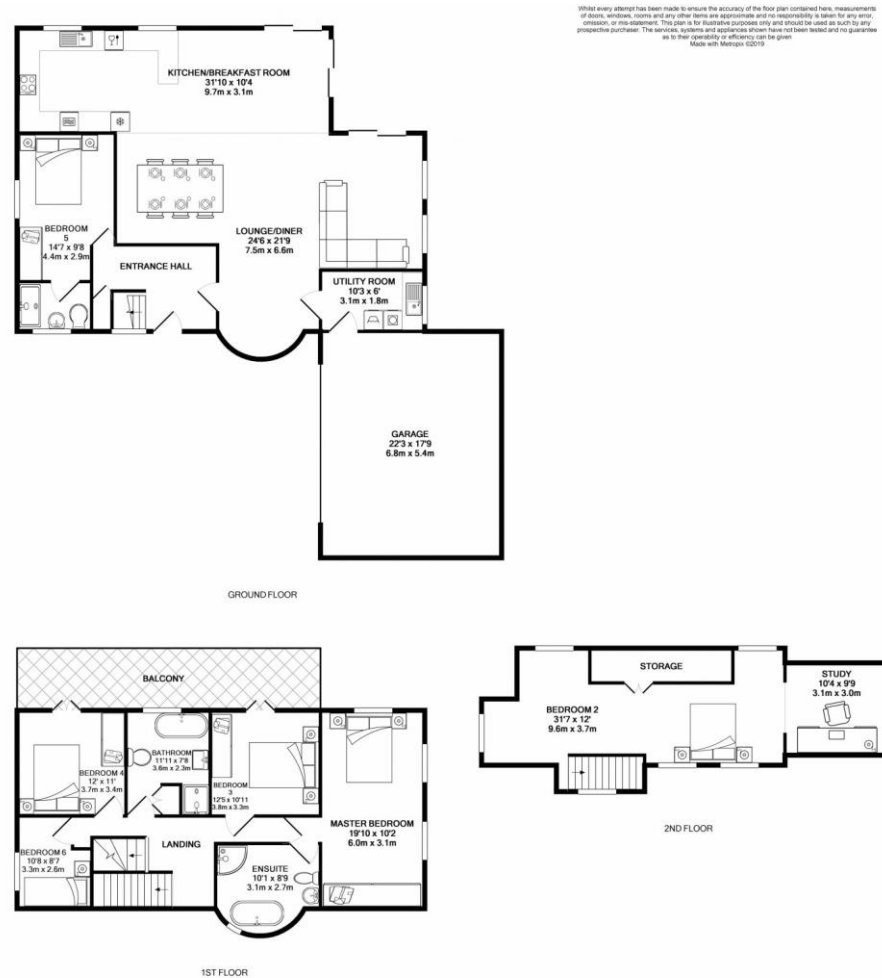
Strictly by appointment with Savills.





FLOORPLANS

Gross internal area: 3800 sq ft, 353 m²



Guernsey
Kelsey Van Katwyk
kelsey.vankatwyk@savills.com
+44 (0) 1481 713 463

savills.gg

Savills, their clients and any joint agents give notice that: 1. They are not authorised to make or give any representations or warranties in relation to the property either here or elsewhere, either on their own behalf or on behalf of their client or otherwise. They assume no responsibility for any statement that may be made in these particulars. These particulars do not form part of any offer or contract and must not be relied upon as statements or representations of fact. 2. Any areas, measurements or distances are approximate. The text, images and plans are for guidance only and are not necessarily comprehensive. It should not be assumed that the property has all necessary planning, building regulation or other consents and Savills have not tested any services, equipment or facilities. Purchasers must satisfy themselves by inspection or otherwise. 20190628ANHX