



A stunning, substantial family home situated on a generous plot in a peaceful lane.

Le Marais, Rue Du Marais, Vale, Guernsey

Asking Price £1,590,000



Stunning traditional family home offering generous accommodation throughout • Beautifully landscaped gardens with outbuildings and a swimming pool • Ample parking for multiple vehicles along with a double garage • Immaculately presented with a flexible layout • Situated in a quiet lane just a short distance from L'Ancrese Common

Local Information

Le Marais is situated in a peaceful lane just a short distance from the lovely L'Ancrese Common and surrounding beaches.

A regular bus route is available along Les Mielles Road.

The school catchment area for the property is Vale Primary and St Sampsons High School.

About this property

This beautiful and substantial family home occupies a generous plot towards the north of the island in one of the areas most quiet and tranquil locations.

With five bedrooms and three/potentially four bathrooms the property is ideal for growing families. The reception areas are beautifully proportioned and offer flowing accommodation with a flexible layout.

The house has the benefit of large parkland gardens, a detached double garage, detached pool/entertaining suite and a heated swimming Pool.

This listed home is one of the finest Local Market homes in the Island and has been carefully maintained by the present owners. A rare chance for a discerning purchaser to acquire a stunning home in a sought after location.

To include the fitted flooring, carpets, curtains, blinds and light fittings as seen. Appliances include:

Integrated Neff double oven, Neff induction hob with Bosch extractor fan over, Neff integrated dishwasher, Neff integrated fridge/freezer, Hotpoint Future free-standing fridge.

Services and Notes

Mains electricity, water and drainage. Heat source central heating. The property is of traditional construction. Mix of single and double wooden glazing. There is plumbing in place in the pool house for a shower/cloakroom. TRP 583.

Directions

Travelling inland from L'Ancrese through the Rocque Balan Lane in to Rue Du Marais the property is after the bend on the left hand side, opposite the turning in to La Vielle Marais. Perry's Guide Map Reference: Page 6 D4.

Tenure

Freehold

Viewing

All viewings will be accompanied and are strictly by prior arrangement through Savills Guernsey Office.

Telephone: +44 (0) 1481 713 463.



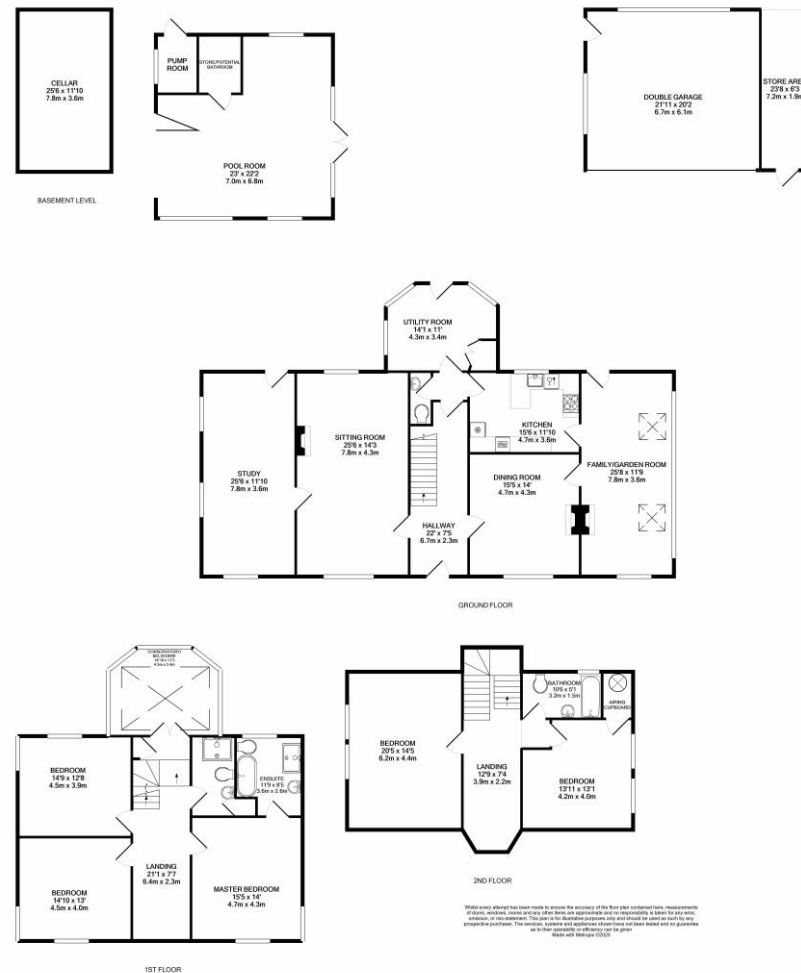












Important notice Savills, its clients and any joint agents give notice that 1: They are not authorised to make or give any representations or warranties in relation to the property either here or elsewhere, either on their own behalf or on behalf of their client or otherwise. They assume no responsibility for any statement that may be made in these particulars. These particulars do not form part of any offer or contract and must not be relied upon as statements or representations of fact. 2: Any areas, measurements or distances are approximate. The text, photographs and plans are for guidance only and are not necessarily comprehensive. It should not be assumed that the property has all necessary planning, building regulation or other consents and Savills have not tested any services, equipment or facilities. Purchasers must satisfy themselves by inspection or otherwise. 20200124CETB

