



IMMACULATELY PRESENTED HOME IN THE NORTH OF THE ISLAND

67 CLOS DES PECQUERIES, LA PASSEE, ST SAMPSON, GUERNSEY

Unfurnished, £1,490 pcm

Available Now



CLOSE TO THE POPULAR WEST COAST

- 2 Bedrooms • 1 Bathrooms • 1 Receptions
- Semi-Detached 2 Bed House • Immaculate Condition • Close to West Coast • Allocated Parking For 1 & Garden • Available Immediately

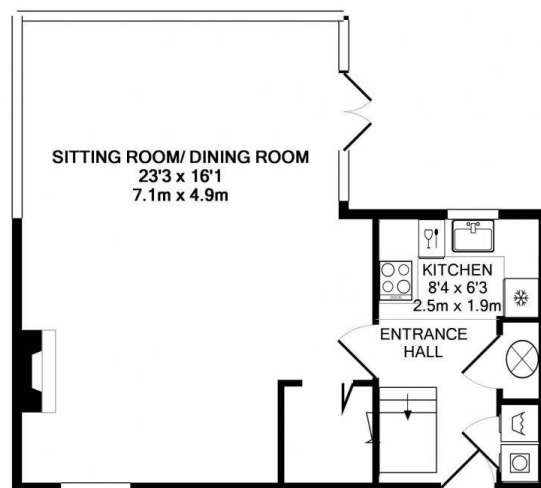
Description

An immaculately presented two bedroom house, situated in the North of the island, very close to the popular West Coast.

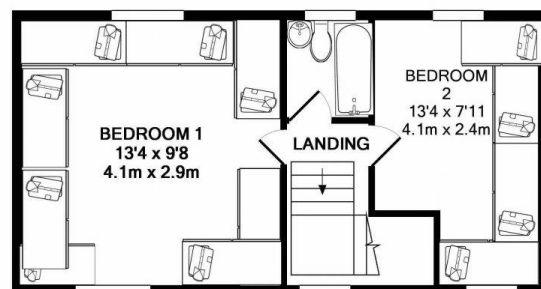
67 Clos des Pecqueries comprises of a kitchen, utility and storage cupboard, large extended sitting room/diner, two bedrooms with fitted furniture and a family bathroom. Externally the property benefits from an easily maintained, south facing, decked patio area with a storage shed, and there is one allocated parking space with ample visitors' parking throughout the Clos.

Ideally suited to a professional couple or small family looking for pristine accommodation.





GROUND FLOOR



1ST FLOOR

Whilst every attempt has been made to ensure the accuracy of the floor plan contained here, measurements of doors, windows, rooms and any other items are approximate and no responsibility is taken for any error, omission, or mis-statement. This plan is for illustrative purposes only and should be used as such by any prospective purchaser. The services, systems and appliances shown have not been tested and no guarantee as to their operability or efficiency can be given
Made with Metropix ©2019

FLOORPLANS

Gross internal area: 872 sq ft, 81 m²



Guernsey Lettings

Maxine Bell
maxine.bell@savills.com

savills.gg

Important notice: Savills, their clients and any joint agents give notice that: 1: They are not authorised to make or give any representations or warranties in relation to the property either here or elsewhere, either on their own behalf or on behalf of their client or otherwise. They assume no responsibility for any statement that may be made in these particulars. These particulars do not form part of any offer or contract and must not be relied upon as statements or representations of fact. 2: Any areas, measurements or distances are approximate. The text, photographs and plans are for guidance only and are not necessarily comprehensive. It should not be assumed that the property has all necessary planning, building regulation or other consents and Savills have not tested any services, equipment or facilities. Tenants must satisfy themselves by inspection or otherwise.

20190704CETB