



## Victorian house in outstanding position

Machrihanish House, Machrihanish, Campbeltown, Argyll, PA28 6PZ



Porch • Reception hallway • WC • Drawing room  
Dining room • Sitting room / study • Conservatory / sun  
room • Kitchen • Two x former maid's rooms • Four  
bedrooms • Bathroom • Shower Room • Gardens  
Outbuildings • EPC Rating F

Campbeltown: 7.4 miles  
Glasgow city centre: 143 miles  
Glasgow Airport: 135 miles

### Situation

Machrihanish House sits within exceptionally well maintained, mature mainly lawned gardens with the front garden having uninterrupted aspects over the beach to the Atlantic.

Machrihanish Beach was the favoured location of one of Scotland's finest impressionist painters, William McTaggart.

Around the corner from Machrihanish House lies the world famous Machrihanish Golf Course, a world top 100 course, laid out in 1879 by "Old" Tom Morris himself. Recently a second course, Machrihanish Dunes, has been built, designed by the renowned golf course architect David McLay Kidd. Machrihanish Dunes has been named as one of the UK and Ireland's Top 100 Courses by Golf World magazine.

Machrihanish House is located on the landward side of the road, a short distance from local amenities such as the recently refurbished Ugadale Hotel and has spectacular panoramic views towards Islay and Jura and across the Machrihanish Bay. The town of Campbeltown is well served by many high street and local shops including supermarkets, several garages, a college, schools, a medical centre/

hospital and yacht club. Machrihanish Airport is approximately 3 miles away from Machrihanish House and there are regular weekday flights to and from Glasgow with a flight time of approximately 30 minutes.

### Description

This elegant, sandstone Victorian villa built circa 1888 displays typically generous room sizes and plenty of original features. Machrihanish House is set in a magnificent position with uninterrupted open aspects over the beach to the Atlantic and is surrounded by carefully tended, mainly lawned gardens with a wide variety of mature trees and shrubs which provide seasonal colour. Within the grounds there are numerous outbuildings including stores, gardener's toilet and former coach house / garage.

The accommodation on the ground floor begins with an entrance vestibule leading to a bright reception hallway with cloakroom off and additional WC. There is also an inner hallway leading to a shower room which has a four piece white suite.









The drawing room has beautiful open aspects with ornate cornicing and feature fireplace and the formal dining room has window aspects to the front overlooking the gardens and beyond to the Atlantic Ocean. There is a sitting room / study which could be utilised for a variety of purposes, an access hallway leading to the sun room / conservatory which again takes full advantage of the beautiful open aspects to the front of the property. We understand that this part of the house was built in the 1930s. The ground floor accommodation is completed by a large open plan kitchen / breakfasting room with a porch leading to the rear garden. There are stairs off the kitchen leading to mid landing level with two former maid's bedrooms. The first floor accommodation comprises four well proportioned double sized bedrooms and a family bathroom.

### Directions

From Glasgow travel westbound on the M8 leaving at Junction 30 and crossing the Erskine Bridge. Proceed onto the A82 towards Tarbet and then take the A83 at Tarbet through Inveraray and Lochgilphead to Tarbert. At Tarbert continue along the A83 down the Kintyre Peninsula to Campbeltown. From Campbeltown head west along the B842 and B843, following signs for Machrihanish. On entering Machrihanish continue past the Machrihanish Golf Course and the Ugadale Hotel. Machrihanish House is on the left hand side at the shore front.

### History

The renowned Victorian painter, William McTaggart RSA (1835-1910) stayed in Machrihanish and painted some of his finest works on the beach close to Machrihanish House.









**Local Authority**

Argyll and Bute

**Possession**

Vacant possession and entry will be given on completion.

**Offers**

Offers must be submitted in Scottish legal terms to the Selling Agents. A closing date for offers may be fixed and prospective purchasers are advised to register their interest with the Selling Agents following inspection.

**Viewing**

Strictly by appointment with Savills - 0141 222 5875

**Purchase price**

Within 7 days of the conclusion of Missives a deposit of 10% of the purchase price shall be paid. The deposit will be non-returnable in the event of the Purchaser(s) failing to complete the sale for reasons not attributable to the Seller or his agents



1st hole Machrihanish golf course

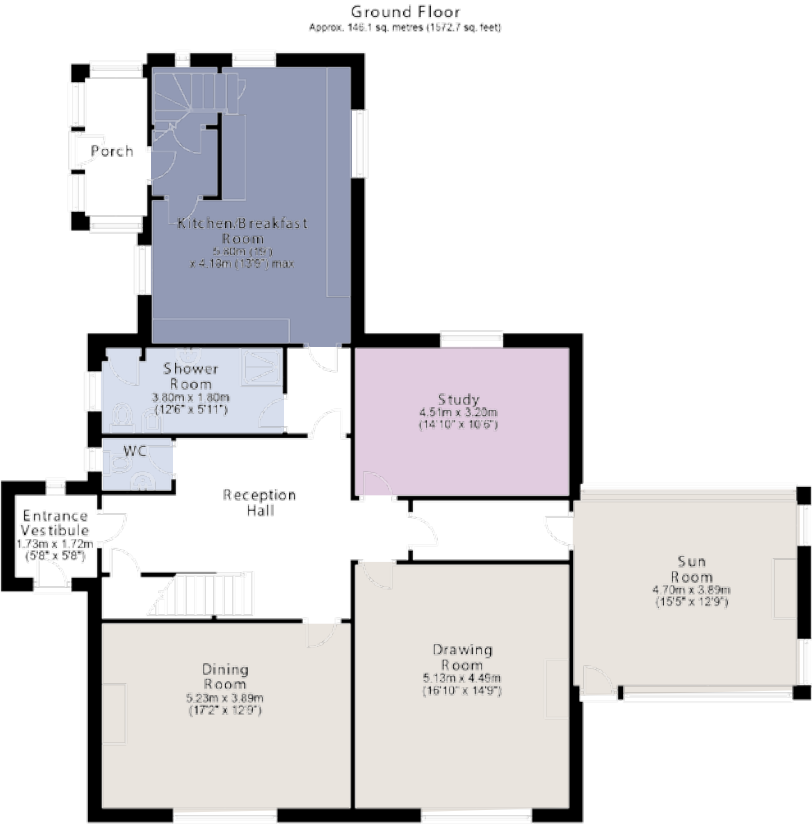








**Machrihanish House, Machrihanish, Campbeltown, Argyll**  
**Gross internal area (approx)** 265.9 sq m/2,862.5 sq ft



For identification only. Not to scale. © 260719

**Important notice** Savills, its clients and any joint agents give notice that 1: They are not authorised to make or give any representations or warranties in relation to the property either here or elsewhere, either on their own behalf or on behalf of their client or otherwise. They assume no responsibility for any statement that may be made in these particulars. These particulars do not form part of any offer or contract and must not be relied upon as statements or representations of fact. 2: Any areas, measurements or distances are approximate. The text, photographs and plans are for guidance only and are not necessarily comprehensive. It should not be assumed that the property has all necessary planning, building regulation or other consents and Savills have not tested any services, equipment or facilities. Purchasers must satisfy themselves by inspection or otherwise.

