



A four bedroom family home, located on Allestree Road  
in the 'Munster Village'.

Allestree Road, London, SW6

£1,400,000 Freehold





Four double bedrooms • Fully extended • Victorian property •  
Sought after location • Good condition

#### Local Information

Allestree Road is situated at the northern end of the Munster Village. The area is well serviced and local amenities can be found on both the Munster Road and Fulham Palace Road. Fulham Broadway is 0.9 miles away and Parsons Green underground station is 0.8 miles away. There are good bus links along the Fulham Palace Road to Hammersmith and along the Fulham Road to the West End and the city.

Bishops Park is 0.8 miles away with Thames walking routes, cafes and a children's playground. Please note these distances are approximates. There is a good selection of schools in the area including Parsons Green Prep, St John's Walham and Sinclair House.

#### About this property

The ground floor features a generous double reception room, leading through to a modern open-plan kitchen diner. Double doors then access a beautifully presented garden.

On the upper floors you'll find the sleeping accommodation, consisting of four bedrooms and two modern family bathrooms. The three larger bedrooms further benefit from built-in wardrobes.

#### Tenure

Freehold

#### Energy Performance

EPC Rating = D

#### Viewing

All viewings will be accompanied and are strictly by prior arrangement through Savills Fulham Office.  
Telephone: +44 (0) 207 731 9400.







Allestree Road, London, SW6  
Gross Internal Area 1660 sq ft, 154.21 m²

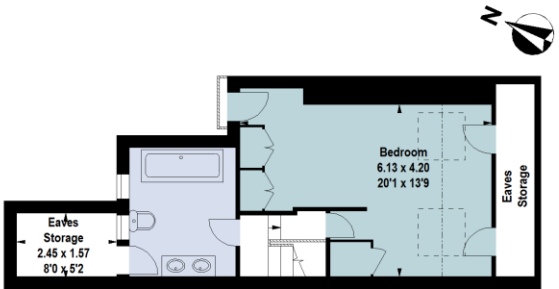
Tom Reeves  
Fulham  
+44 (0) 207 731 9400  
tom.reeves@savills.com

[onTheMarket.com](#) | [savills](#) | [savills.co.uk](#)

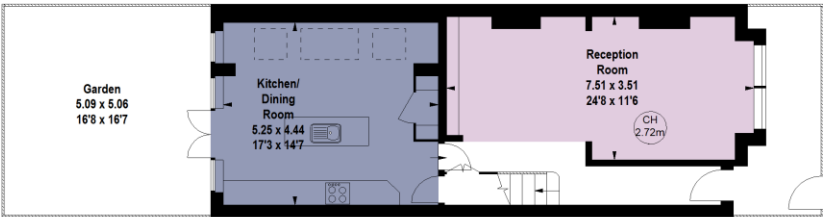
18 Allestree Road, SW6

Gross internal area (approx) 154.21 sq m / 1660 sq ft  
(Including Eaves Storage)  
Eaves Storage area (approx) 8.27 sq m / 89 sq ft

Key :  
CH - Ceiling Height

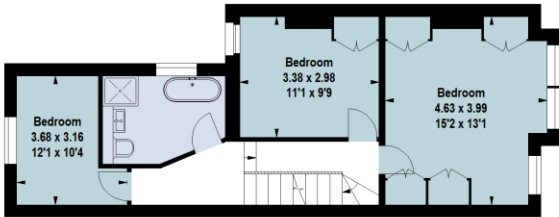


Second Floor

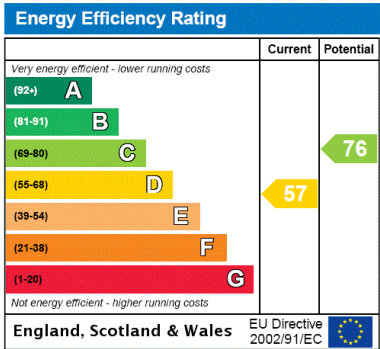


Ground Floor

For Identification Only. Not To Scale.  
© Click London Limited



First Floor



**Important Notice** Savills, its clients and any joint agents give notice that 1: They are not authorised to make or give any representations or warranties in relation to the property either here or elsewhere, either on their own behalf or on behalf of their client or otherwise. They assume no responsibility for any statement that may be made in these particulars. These particulars do not form part of any offer or contract and must not be relied upon as statements or representations of fact. 2: Any areas, measurements or distances are approximate. The text, photographs and plans are for guidance only and are not necessarily comprehensive. It should not be assumed that the property has all necessary planning, building regulation or other consents and Savills have not tested any services, equipment or facilities. Purchasers must satisfy themselves by inspection or otherwise. 20200921CHGL

