



A large three bedroom family home in Fulham

Bishops Road, SW6

Freehold



Potential to extend (STPP)

- Impressive master suite
- Victorian property
- Chain free
- Good condition

Bishops Road, SW6



savills

savills.co.uk

Emma Stead

Savills Fulham

020 7731 9400

fulham@savills.com

Description

On the ground floor you'll find an entrance hallway, leading through to a generous double reception room. There is then a large open-plan kitchen with bi-fold doors leading out to a patio garden.

The master suite is located on the first floor comprising of a large double bedroom, walk through wardrobe and modern en-suite bathroom with separate shower. There is then a second double bedroom, modern family bathroom and the loft space has been converted to create a third double bedroom with en-suite. The property further benefits to the potential to add a pod room, subject to any necessary consents.

Location

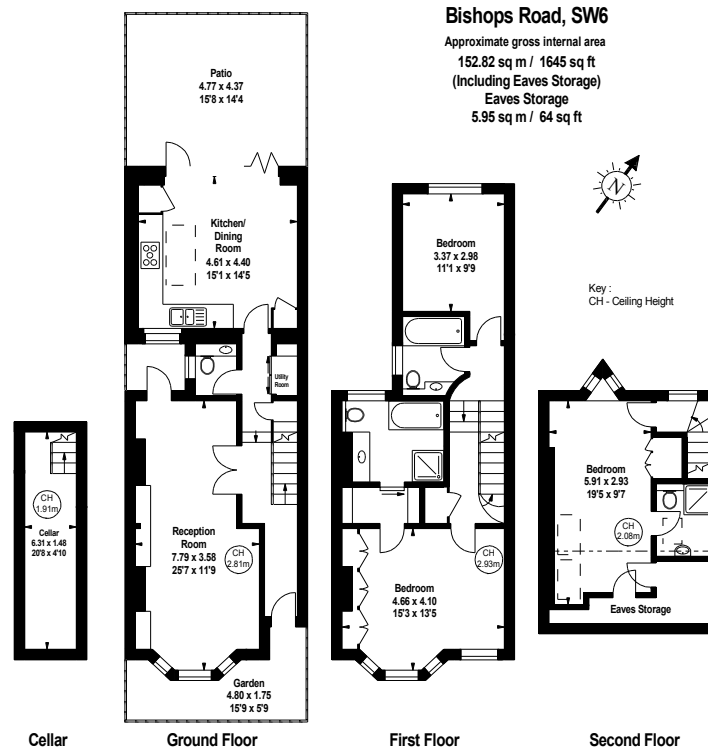
Bishops Road is ideally located for the many popular restaurants, bars and boutiques on the Fulham Road and also a number of superb nursery and primary schools in the area.

Energy Performance

A copy of the full Energy Performance Certificate is available upon request.

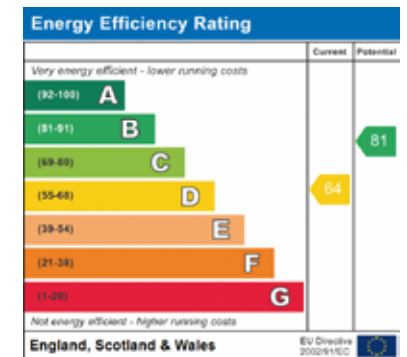
Viewing

Strictly by appointment.



The floor plan is not to scale and measurements and areas shown are approximate and therefore should be used for illustrative purposes only. The plan has been prepared in accordance with the RICS code of Measuring Practice and whilst we have confidence in the information produced, it must not be relied on. If there is any aspect of particular importance, you should carry out or commission your own inspection of the property.
Copyright of FeaturePRO.

For identification only. Not to scale. © 190913ES



Important notice Savills, its clients and any joint agents give notice that 1: They are not authorised to make or give any representations or warranties in relation to the property either here or elsewhere, either on their own behalf or on behalf of their client or otherwise. They assume no responsibility for any statement that may be made in these particulars. These particulars do not form part of any offer or contract and must not be relied upon as statements or representations of fact. 2: Any areas, measurements or distances are approximate. The text, photographs and plans are for guidance only and are not necessarily comprehensive. It should not be assumed that the property has all necessary planning, building regulation or other consents and Savills have not tested any services, equipment or facilities. Purchasers must satisfy themselves by inspection or otherwise. Brochure by fourwalls-group.com

