



# A stunning five bedroom fully extended family home

Tasso Road, London, W6

Freehold



- Converted basement
- Over 2300sqft
- Five double bedrooms
- Recently refurbished
- Sought after location

#### Location

Tasso Road is located off Greyhound Road in Barons Court. The nearest tubes are West Kensington (0.5 miles from the property) and Barons Court (0.6 miles from the property). There are also extensive bus links on the nearby Lillie Road and Fulham Palace Road with access in to Central and the West End of London. As well as easy access out of London via the M4/A4.

The property also benefits from being 0.5 miles from the prestigious Queens Club, 0.2 miles from Fulham Prep School and 0.6 miles from the River Cafe. Please note all distances are approximate.

#### About this property

On entering the property you will find an impressive double reception room, leading through to a stunning open plan kitchen with kitchen island. Double doors then lead out to a beautifully presented south facing garden.

One of the property's greatest selling points is the recently converted basement, creating an extra 700 sqft of living space and benefiting from an impressive ceiling height. This basement floor comprises of a second reception room along with utility room, guest W.C. and the fifth bedroom with en-suite shower room.

On the first floor you will find a large double bedroom with en-suite shower room, two further double bedrooms and a family bathroom. The master suite is located on the top floor and features a very large double bedroom, with en-suite bathroom.

The current owner has gone to great lengths to install roof lights windows where possible, to create a wonderful feeling of light and space throughout.

#### Tenure

Freehold

#### Local Authority

Hammersmith and Fulham London Borough Council

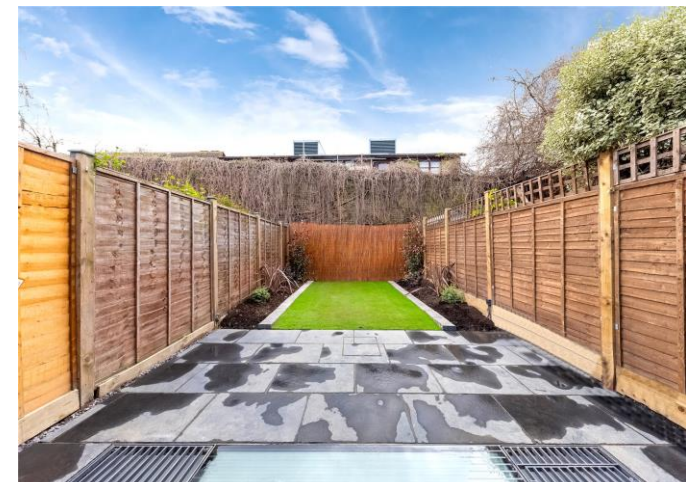
#### Energy Performance

EPC Rating = C

#### Viewing

All viewings will be accompanied and are strictly by prior arrangement through Savills Fulham Office.

Telephone: +44 (0) 207 731 9400.

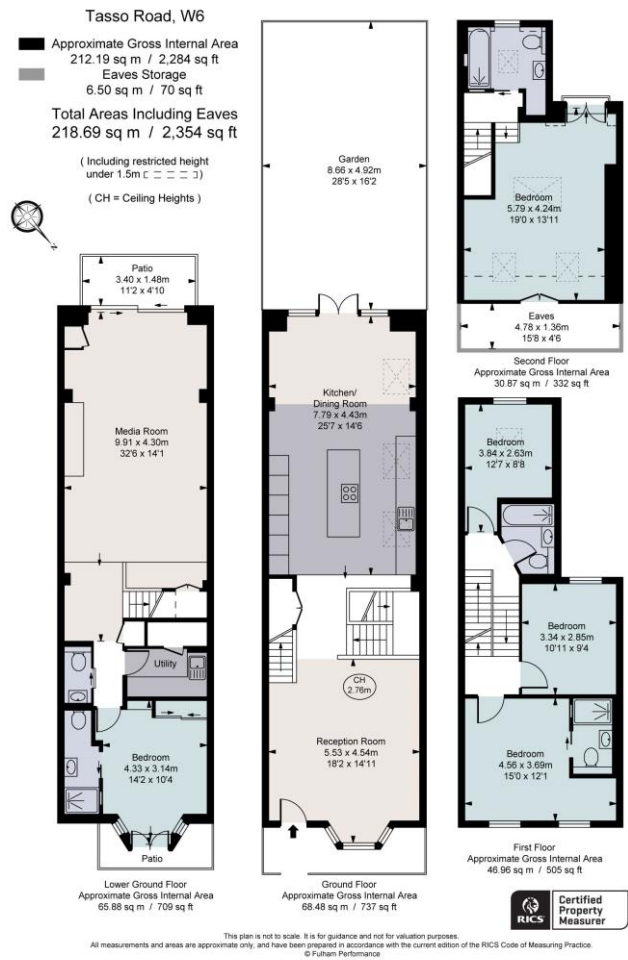






Tasso Road, London, W6  
Gross Internal Area 2,354 sq ft, 218.69 m²

Tom Reeves  
Fulham  
+44 (0) 207 731 9400  
tom.reeves@savills.com



Energy Efficiency Rating		
	Current	Potential
Very energy efficient - lower running costs		
(92+) A		
(81-91) B		
(69-80) C	78	84
(55-68) D		
(39-54) E		
(21-38) F		
(1-20) G		
Not energy efficient - higher running costs		
England, Scotland & Wales	EU Directive 2002/91/EC	

**Important notice** Savills, its clients and any joint agents give notice that 1: They are not authorised to make or give any representations or warranties in relation to the property either here or elsewhere, either on their own behalf or on behalf of their client or otherwise. They assume no responsibility for any statement that may be made in these particulars. These particulars do not form part of any offer or contract and must not be relied upon as statements or representations of fact. 2: Any areas, measurements or distances are approximate. The text, photographs and plans are for guidance only and are not necessarily comprehensive. It should not be assumed that the property has all necessary planning, building regulation or other consents and Savills have not tested any services, equipment or facilities. Purchasers must satisfy themselves by inspection or otherwise. 20200323AFOG

