



## A stunning two bedroom apartment in Grade II Listed conversion

**Blackmoor House, Sotherington Lane, Liss, Hampshire, GU33**

£1,300 pcm plus fees apply, part-furnished or unfurnished  
Available from 26.04.2020

savills



Beautiful penthouse apartment with wooden beams • Large open plan kitchen with rural views • Two double bedrooms with built-in storage • Bathroom has separate bath and shower cubicle • Communal Grounds, Swimming Pool & Tennis Court • Single Garage

#### About this property

A spacious top floor apartment in the stunning Grade II Listed Blackmoor House. The apartment is accessed via the communal entrance and comprises a fantastic reception room with open fireplace and vaulted ceiling and generous kitchen-breakfast room both of which enjoy long reaching view of the beautiful estate. There are two generous double bedrooms along with a recently refitted bathroom. Within the complex there are extensive communal grounds and the benefit of use of the communal outdoor pool and tennis court.

#### Furnishing

Part Furnished, Unfurnished

#### Local Authority

East Hampshire District Council,  
Petersfield  
Council Tax Band = E

#### Energy Performance

EPC Rating = E

#### Viewing

All viewings will be accompanied and are strictly by prior arrangement through Savills Farnham Lettings Office.  
Telephone: +44 (0) 1252 729 003.

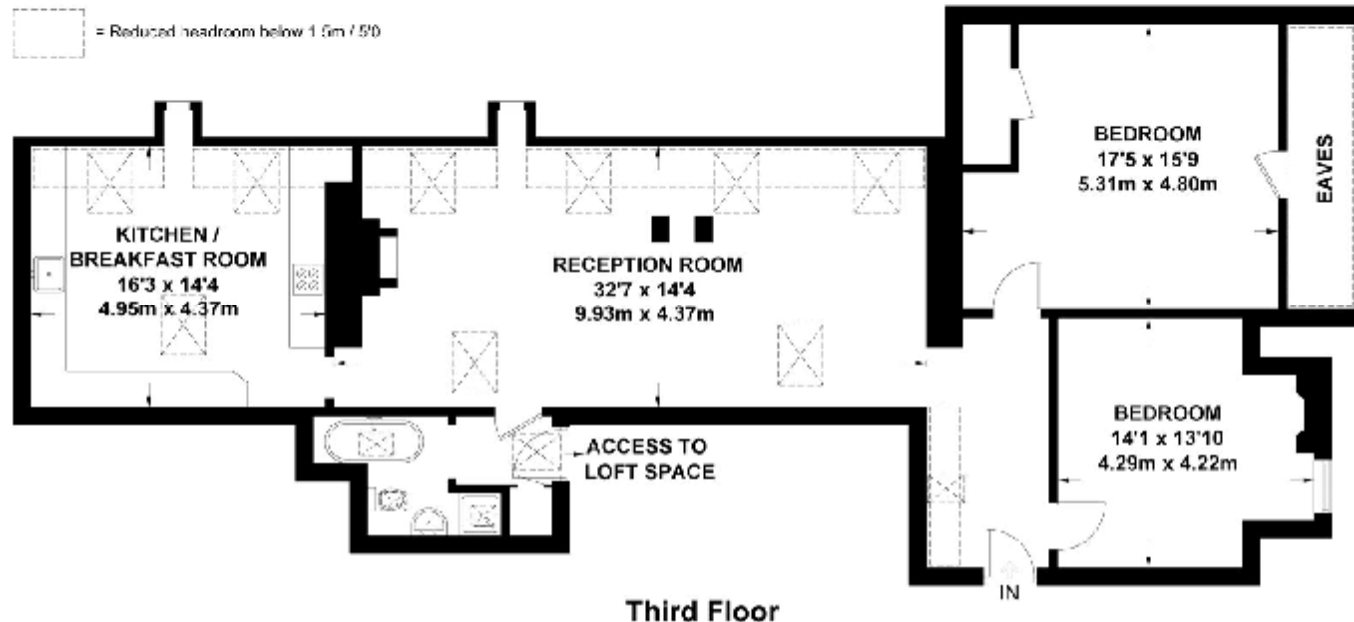






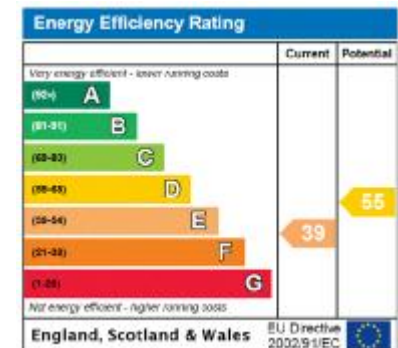
## Sotherington Lane

Approximate Gross Internal Area = 127.5 sq m / 1372 sq ft  
(Excluding Eaves)



Exposure House © 2016 (ID247841)  
[www.exposurehouse.co.uk](http://www.exposurehouse.co.uk)

Whilst every attempt has been made to ensure the accuracy of this floor plan, measurements of doors, windows and rooms are approximate and no responsibility is taken for any error or omission. This illustration is for identification purposes only. Measured and drawn in accordance with RICS guidelines. Not drawn to scale, unless stated. Dimensions shown are to the nearest 3" and are to the points indicated by the arrow heads.



**Important notice** Savills, their clients and any joint agents give notice that: 1. They are not authorised to make or give any representations or warranties in relation to the property either here or elsewhere, either on their own behalf or on behalf of their client or otherwise. They assume no responsibility for any statement that may be made in these particulars. These particulars do not form part of any offer or contract and must not be relied upon as statements or representations of fact. 2. Any areas, measurements or distances are approximate. The text, images and plans are for guidance only and are not necessarily comprehensive. It should not be assumed that the property has all necessary planning, building regulation or other consents and Savills have not tested any services, equipment or facilities. Prospective tenants must satisfy themselves by inspection or otherwise. Please note that the local area may be affected by aircraft noise, you should make your own enquiries regarding any noise within the area before you make any offer.

\*There are different rules and fees for different tenancy types. For details of our fees and charges go to [Savills.co.uk/tenant-fees](http://Savills.co.uk/tenant-fees). For more detailed information read our applicant guide at [savills.co.uk/applicant-guide](http://savills.co.uk/applicant-guide). Hard copy available on request. . 20200312SMAL

