



Beautiful apartment in private gated development

Flat, 6 Rosemary Gate, 14 Esher Park Avenue, Esher KT10 9NZ

Share of Freehold



Open plan kitchen/breakfast room • Two bedrooms • Two bathrooms • Private balcony • Secure underground parking • Communal gardens

Local information

Rosemary Gate is a private gated development on Esher Park Avenue, one of Esher's premier private roads.

It is enviably located within just a few hundred yards of Esher High Street with its array of shops, boutiques, bars and restaurants, Everyman cinema and Waitrose supermarket.

Both Esher and Claygate mainline railway stations are about 1 mile away and offer regular and direct trains to London Waterloo from 23 and 31 minutes respectively.

The Elmbridge area is popular with families as there is an excellent selection of both state and independent schools in the local area.

About this property

Set behind secure gates these well-regarded apartments are surrounded by well-maintained communal gardens which feature a covered seating area.

You are welcomed into the entrance hall benefitting from a store cupboard. The expansive open plan kitchen/reception room is light and airy and benefits from French doors opening onto a delightful private terrace providing beautiful views over the garden.

The kitchen boasts ample units, integrated appliances and a breakfast bar. There is also space for a dining table.

The generous principal bedroom

boasts built in wardrobes as well as an en suite shower room.

Bedroom two also benefits from built-in wardrobe/storage and completing the accommodation is the modern bathroom with bath and separate shower.

Externally, this apartment features beautifully landscaped communal gardens and one underground allocated parking space.

Tenure

Share of Freehold

Local Authority

Elmbridge Borough Council

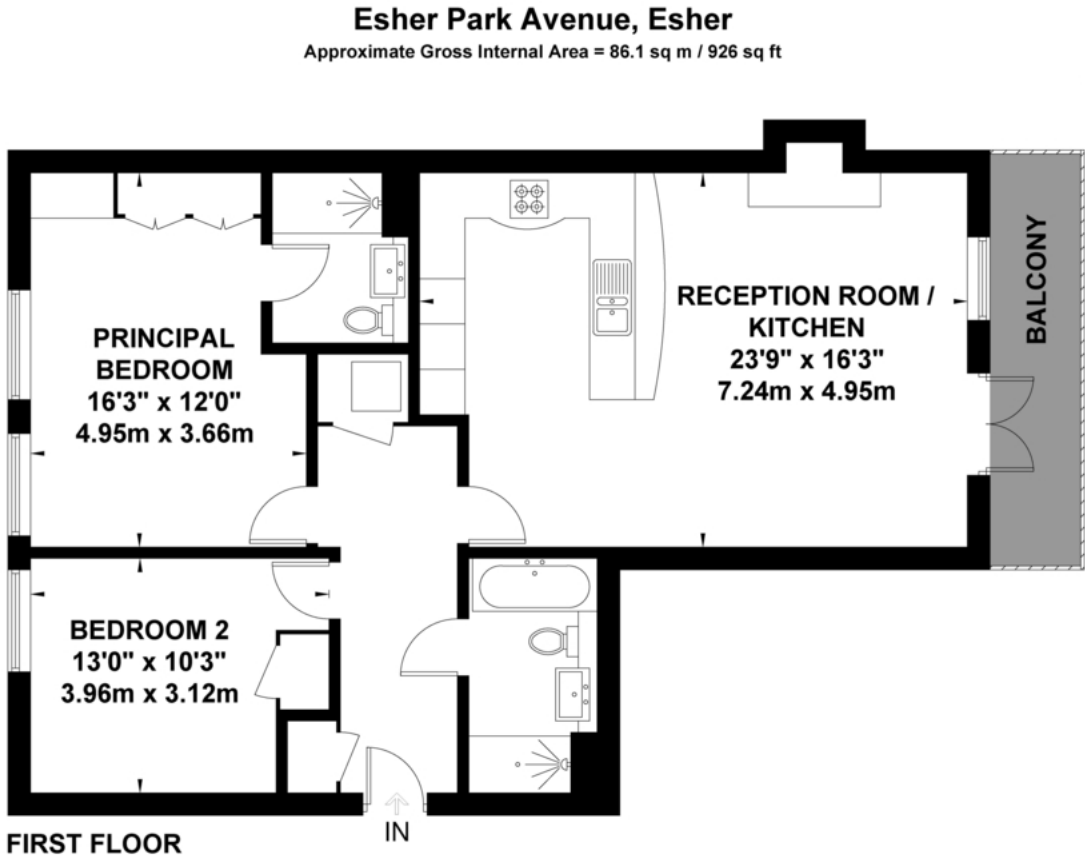
EPC rating = B

Viewing

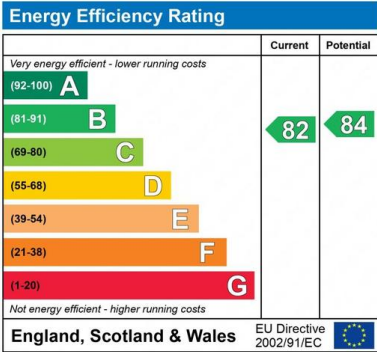
Strictly by appointment with Savills







Exposure House © 2022
www.exposure.house
Whilst every attempt has been made to ensure the accuracy of this floor plan, measurements of doors, windows and rooms are approximate and no responsibility is taken for any error or omission. This illustration is for identification purpose only. Measured and drawn accordance with RICS guidelines. Not drawn to scale, unless stated. Dimensions shown are to the nearest 3" and are to the points indicated by the arrow heads.



Important notice: Savills, their clients and any joint agents give notice that 1: They are not authorised to make or give any representations or warranties in relation to the property either here or elsewhere, either on their own behalf or on behalf of their client or otherwise. They assume no responsibility for any statement that may be made in these particulars. These particulars do not form part of any offer or contract and must not be relied upon as statements or representations of fact. 2: Any areas, measurements or distances are approximate. The text, photographs and plans are for guidance only and are not necessarily comprehensive. It should not be assumed that the property has all necessary planning, building regulation or other consents and Savills have not tested any services, equipment or facilities. Purchasers must satisfy themselves by inspection or otherwise. 22025072 Job ID: 159860 User initials: ST