



Characterful Grade II listed home

Tudor House, Hampton Court Road, East Molesey KT8 9BZ

Freehold





Living room • Dining room • Kitchen • Library/study • 2 bedrooms • Bathroom • Courtyard garden

Local information

Tudor House is situated in a fantastic position backing Bushy Park and enjoying magnificent views of the Royal gardens of Hampton Court Palace opposite. The River Thames is also close by providing scenic towpath walks.

Hampton Court Station is 0.6 miles away and provides regular and

direct trains into London Waterloo from 33 minutes. Bridge Road, located in popular 'Hampton Court Village', is 0.8 miles away and offers an array of restaurants, bars, boutiques and shops. More extensive shopping can be found in nearby Kingston upon Thames (1.4 miles). The road links are excellent with the M3 being just 4 miles away which links with the

M25 and M4 and London Heathrow airport is located about 10 miles away.

About this property

Set behind a gated wall, Tudor House is a delightful period home dating back to the late 1600s and reputedly built by the famous architects Sir Christopher Wren assistant for Abraham Fish, the gardener in chief for William and Mary, joint monarchs. The property which was fully renovated in 2017, enjoys a picturesque courtyard garden to the front with an array of plants and shrubbery; the

perfect place for al fresco dining. Welcoming you into this delightful home is the dining area featuring an impressive working Minster fireplace and a bay window with attractive plantation shutters. Adjacent is the kitchen which offers a good range of shaker style wall and base mounted cabinetry, granite worktops and integrated appliances.

From the dining area, a stylish wood staircase with glass balustrade leads up to the first floor from where stunning views of Hampton Court Palace and the



Royal gardens can be enjoyed. This floor comprises a cosy living room with feature stone surround fireplace and adjacent is a delightful library/study featuring wood panelled walls and built in shelving.

The stylish staircase continues from the living room to the second floor which similarly enjoys the views over the Palace and grounds. There are 2 bedrooms on this floor and a well appointed bathroom with Jacuzzi bath and separate shower.

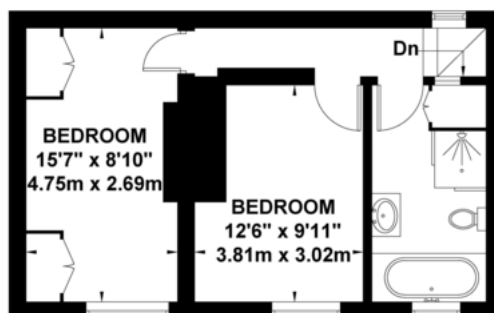
Tenure
Freehold

Local Authority
The London Borough of Richmond upon Thames

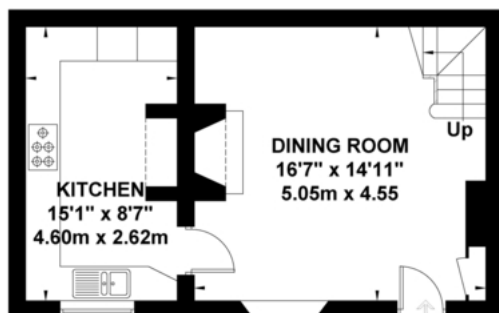
Viewing
Strictly by appointment with Savills

Hampton Court Road, East Molesey

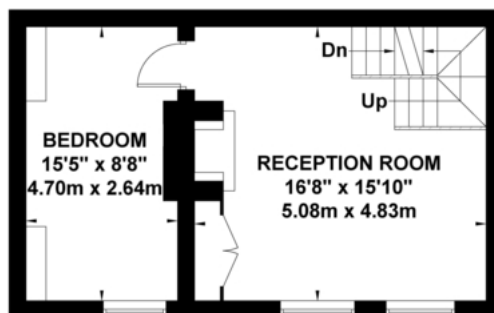
Approximate Gross Internal Area = 115.8 sq m / 1246 sq ft



SECOND FLOOR



GROUND FLOOR



FIRST FLOOR

Exposure House © 2019
www.exposurehouse.co.uk

Whilst every attempt has been made to ensure the accuracy of this floor plan, measurements of doors, windows and rooms are approximate and no responsibility is taken for any error or omission. This illustration is for identification purpose only. Measured and drawn accordance with RICS guidelines. Not drawn to scale, unless stated. Dimensions shown are to the nearest 3" and are to the points indicated by the arrow heads.



Important notice: Savills, their clients and any joint agents give notice that 1: They are not authorised to make or give any representations or warranties in relation to the property either here or elsewhere, either on their own behalf or on behalf of their client or otherwise. They assume no responsibility for any statement that may be made in these particulars. These particulars do not form part of any offer or contract and must not be relied upon as statements or representations of fact. 2: Any areas, measurements or distances are approximate. The text, photographs and plans are for guidance only and are not necessarily comprehensive. It should not be assumed that the property has all necessary planning, building regulation or other consents and Savills have not tested any services, equipment or facilities. Purchasers must satisfy themselves by inspection or otherwise. 91020192 Job ID: 137873 User initials: KMS