



STYLISH INTERIOR THROUGHOUT

42 Pembroke Avenue, Surbiton KT5 8HW

Freehold



Reception room • Kitchen/dining/family room • 4 bedrooms • 2 bathrooms • Studio • Utility room • Garden • Off-street parking

Local information

Located 0.2 miles from Berrylands Station which provides a direct service to London Waterloo from 31 minutes. Surbiton Station is 1.4 miles away providing a regular and direct service to London Waterloo from just 17 minutes. The area is very popular with families as there is an excellent selection of schools available including Grand Avenue Primary and Christchurch. The popular Green Lane Recreational public open space and Berrylands Nature Reserve are also close by.

About this property

A lovely family home which is immaculately and stylishly presented. The ground floor includes a spacious reception room with large bay window, fireplace and bespoke display cabinet. The expansive kitchen/dining/family room

boasts a range of modern units, integrated appliances and sliding doors providing access to the outside. The first floor comprises of 3 bedrooms, one of which benefits from built in storage. The bedroom to the rear has French doors which open to a feature balcony with glass floor, which enjoys far-reaching views. All bedrooms share the use of the family bathroom and separate WC. The second floor bedroom is both spacious and bright with a sumptuous en suite shower room and eaves storage. The rear garden enjoys a mix of both lawn and decking with a bonus studio which has a useful utility room adjacent. There is off-street parking to the front.

Tenure

Freehold





42 Pembroke Avenue, Surbiton KT5 8HW



savills

savills.co.uk

Savills Esher

01372 461900

esher@savills.com

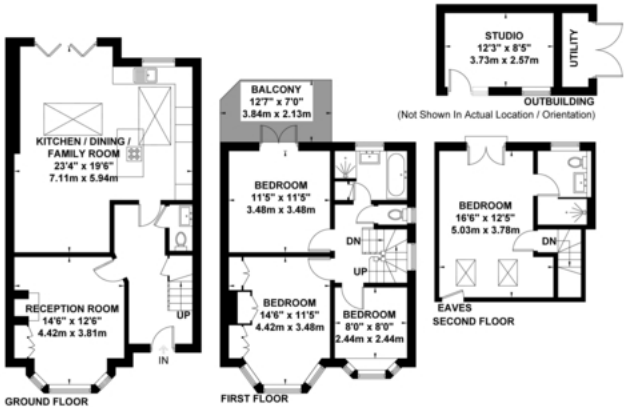


Pembroke Avenue, Surbiton

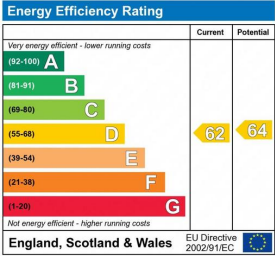
Approximate Gross Internal Area = 135.1 sq m / 1454 sq ft

Outbuilding = 12.6sq m / 135 sq ft

Total = 147.7 sq m / 1589 sq ft



Exposure House © 2019
www.exposurehouse.co.uk
Whilst every attempt has been made to ensure the accuracy of this floor plan, measurements of doors, windows and rooms are approximate and no responsibility is taken for any error or omission. This illustration is for identification purposes only. Measured and drawn in accordance with RICS guidelines. Not drawn to scale, unless stated. Dimensions shown are to the nearest 5" and are to the points indicated by the arrow heads.



Important notice: Savills, their clients and any joint agents give notice that 1: They are not authorised to make or give any representations or warranties in relation to the property either here or elsewhere, either on their own behalf or on behalf of their client or otherwise. They assume no responsibility for any statement that may be made in these particulars. These particulars do not form part of any offer or contract and must not be relied upon as statements or representations of fact. 2: Any areas, measurements or distances are approximate. The text, photographs and plans are for guidance only and are not necessarily comprehensive. It should not be assumed that the property has all necessary planning, building regulation or other consents and Savills have not tested any services, equipment or facilities. Purchasers must satisfy themselves by inspection or otherwise. 91026052 Job ID: 133524 User initials: sc

