



A well proportioned two bedroom raised ground floor apartment with its own private garden

**Eardley Crescent, London, SW5**

£825,000 Share of Freehold





**About this property**

The apartment is located on a popular SW5 address and benefits from being conveniently positioned for many local amenities.

The apartment is located on the raised ground floor of a converted period townhouse. The accommodation comprises a reception room, two bedrooms, a separate kitchen. The apartment greatly benefits from the rare luxury of its own private rear garden.

Overall the apartment is well presented and would make a perfect first time home, London base or rental investment.

**Local Information**

Eardley Crescent is located approximately 110 metres from Earls Court tube station and approximately 0.2 miles from West Brompton station. The transport links from this property are superb if you are travelling both in or out of London

**Tenure**

Share of Freehold (91 underlying leasehold years remaining)

**Local Authority**

The Royal Borough of Kensington and Chelsea

**Energy Performance**

EPC Rating = E

**Viewing**

All viewings will be accompanied and are strictly by prior arrangement through Savills Earl's Court Office.

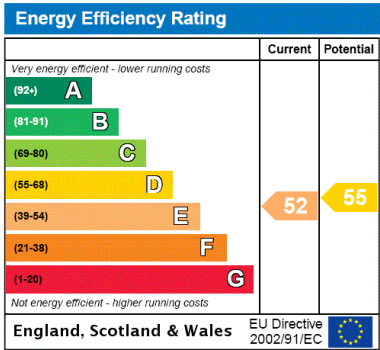
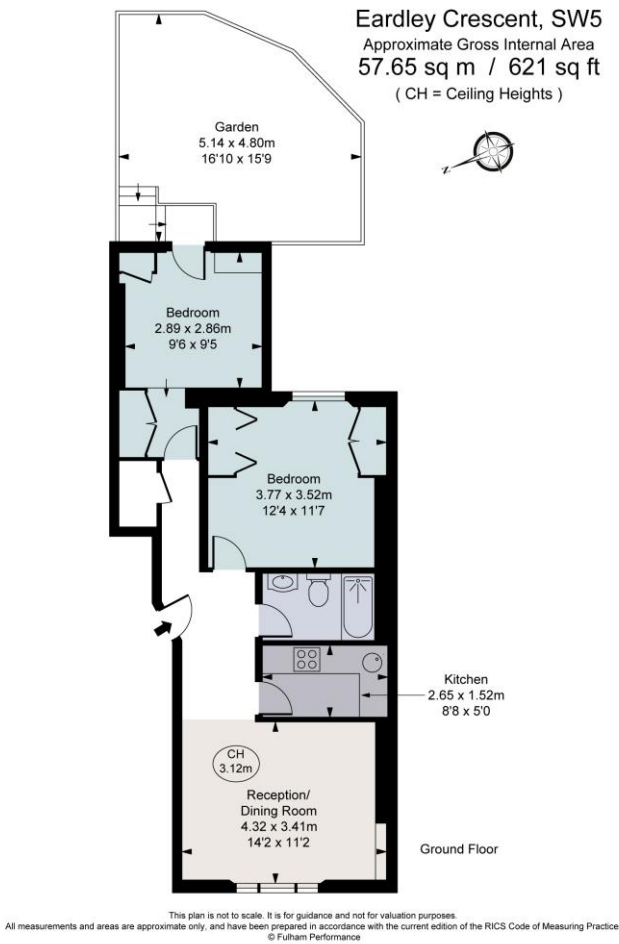
Telephone: +44 (0) 20 7578 6900.





Eardley Crescent, London, SW5  
Gross Internal Area 621 sq ft, 57.65 m²

Earl's Court  
+44 (0) 20 7578 6900  
dan.carrington@savills.com



**Important Notice** Savills, its clients and any joint agents give notice that 1: They are not authorised to make or give any representations or warranties in relation to the property either here or elsewhere, either on their own behalf or on behalf of their client or otherwise. They assume no responsibility for any statement that may be made in these particulars. These particulars do not form part of any offer or contract and must not be relied upon as statements or representations of fact. 2: Any areas, measurements or distances are approximate. The text, photographs and plans are for guidance only and are not necessarily comprehensive. It should not be assumed that the property has all necessary planning, building regulation or other consents and Savills have not tested any services, equipment or facilities. Purchasers must satisfy themselves by inspection or otherwise. 20210208ANIL

