



An excellent third floor one bedroom apartment for sale in Lillie Square, SW6

**Bolander Grove, London, SW6**

£695,000 Leasehold (992 years remaining)





### About this property

Lillie Square is one of the areas most popular and luxurious modern developments. This particular one bedroom apartment is located on the third floor in Bolander Grove. The accommodation comprises an open plan living room & kitchen, a double bedroom with private en suite bathroom.

The apartment is finished with the dark color pallet adding a feeling of luxury and opulence.

Lillie Square also features a 5-star concierge service, a private residents' club with swimming pool, gym, sauna and 24-hour security.

### Local Information

Located approximately 0.1 miles from West Brompton station (Overland & District Lines) and approximately 0.5 miles from Earl's Court station. The property is also conveniently located for a selection of local shops, restaurants and bars

### Tenure

Leasehold (992 years remaining)

### Local Authority

The London Borough of Hammersmith and Fulham

### Energy Performance

EPC Rating = B

### Viewing

All viewings will be accompanied and are strictly by prior arrangement through Savills Earl's Court Office. Telephone: +44 (0) 20 7578 6900.

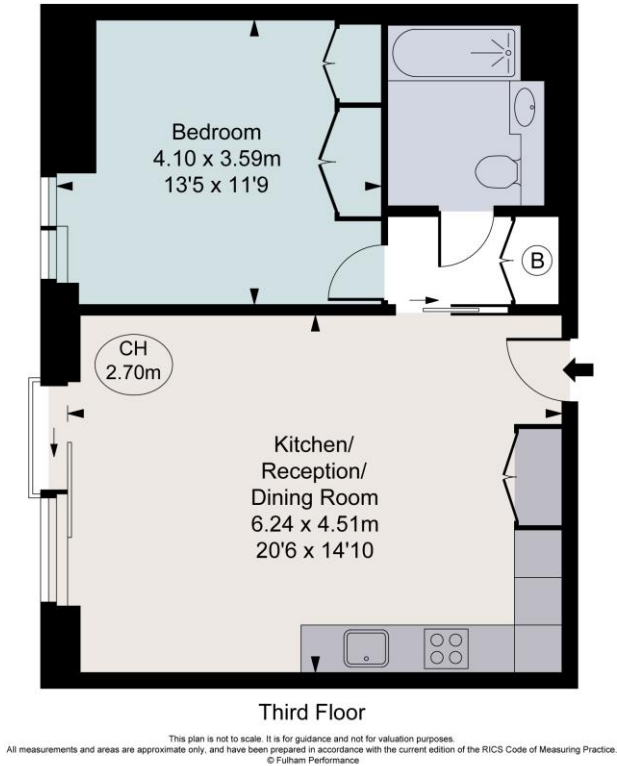







Bolander Grove, London, SW6  
Gross Internal Area 535 sq ft, 49.7 m²

Bolander Grove North, SW6  
Approximate Gross Internal Area  
**49.73 sq m / 535 sq ft**  
( CH = Ceiling Heights )



Energy Efficiency Rating		
	Current	Potential
Very energy efficient - lower running costs		
(92+) <b>A</b>		
(81-91) <b>B</b>	86	86
(69-80) <b>C</b>		
(55-68) <b>D</b>		
(39-54) <b>E</b>		
(21-38) <b>F</b>		
(1-20) <b>G</b>		
Not energy efficient - higher running costs		
England, Scotland & Wales	EU Directive 2002/91/EC 	

**Important Notice** Savills, its clients and any joint agents give notice that 1: They are not authorised to make or give any representations or warranties in relation to the property either here or elsewhere, either on their own behalf or on behalf of their client or otherwise. They assume no responsibility for any statement that may be made in these particulars. These particulars do not form part of any offer or contract and must not be relied upon as statements or representations of fact. 2: Any areas, measurements or distances are approximate. The text, photographs and plans are for guidance only and are not necessarily comprehensive. It should not be assumed that the property has all necessary planning, building regulation or other consents and Savills have not tested any services, equipment or facilities. Purchasers must satisfy themselves by inspection or otherwise. 20210128ANIL

