



A stunning two bedroom apartment that has been recently refurbished throughout and benefitting from access into a beautiful communal square.

**Rupert House, Nevern Square, London, SW5**

£595,000 Leasehold (127 Years 4 months remaining)





**About this property**

The current owner of this apartment has lovingly refurbished it to create a wonderful two bedroom home. The accommodation comprises a south facing reception room with double doors, a separate kitchen, master bedroom and an additional second bedroom perfect for a home office. In addition to the well proportioned accommodation there are also various fitted cupboards.

The building is well maintained and the communal areas are clean and tidy.

The apartment further benefits from a newly extended lease and access into one of the areas most desirable communal garden squares.

**Local Information**

Nevern Square is located close the amenities of Earl's Court Road, and the nearest underground station is Earls Court serving the Piccadilly and District Lines.

**Tenure**

Leasehold

**Local Authority**

The Royal Borough of Kensington and Chelsea

**Energy Performance**

EPC Rating = C

**Viewing**

All viewings will be accompanied and are strictly by prior arrangement through Savills Earl's Court Office. Telephone: +44 (0) 20 7578 6900.

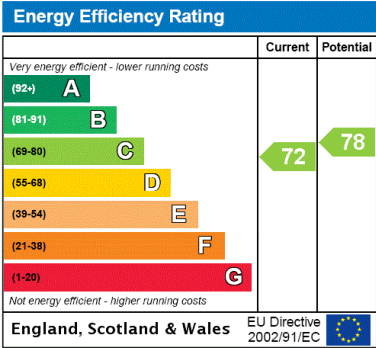
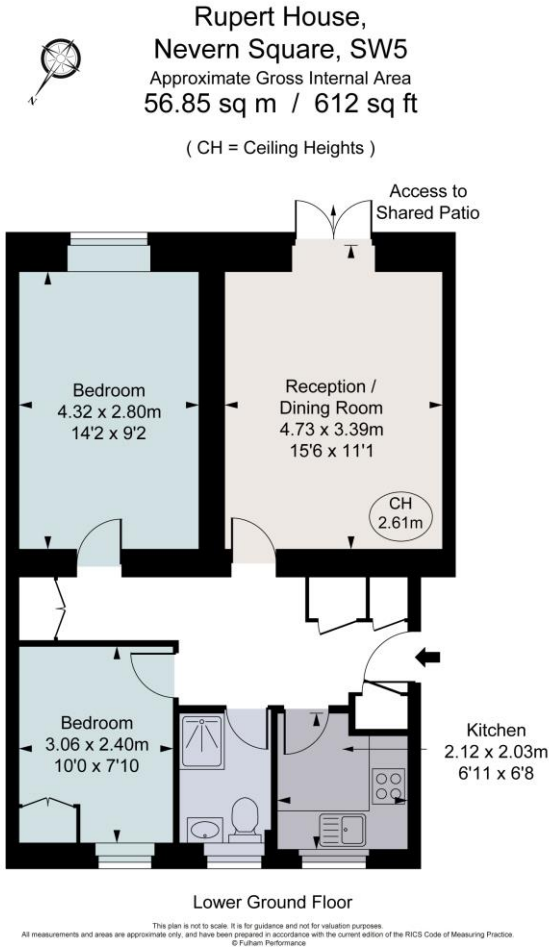






Rupert House, Nevern Square, London, SW5  
Gross Internal Area 612 sq ft, 56.9 m<sup>2</sup>

Earl's Court  
**+44 (0) 20 7578 6900**  
dan.carrington@savills.co.uk



**Important Notice** Savills, its clients and any joint agents give notice that 1: They are not authorised to make or give any representations or warranties in relation to the property either here or elsewhere, either on their own behalf or on behalf of their client or otherwise. They assume no responsibility for any statement that may be made in these particulars. These particulars do not form part of any offer or contract and must not be relied upon as statements or representations of fact. 2: Any areas, measurements or distances are approximate. The text, photographs and plans are for guidance only and are not necessarily comprehensive. It should not be assumed that the property has all necessary planning, building regulation or other consents and Savills have not tested any services, equipment or facilities. Purchasers must satisfy themselves by inspection or otherwise. 20201106ANIL

