



A superb lateral four bedroom apartment extending to approximately 2,171 square foot with a double reception room, a south facing aspect and wonderful ceiling heights for sale in SW5

The Mansions, Old Brompton Road, London, SW5

£2,950,000 Share of Freehold



About this property

The Mansions is a popular period red brick mansion block comprising well proportioned and sensibly configured apartments. This particular apartment is one of the larger units extending to approximately 2,171 square foot. The accommodation comprises a welcoming entrance hall, a reception room with large bay window, a separate dining room with French doors leading onto the balcony, four double bedrooms, two bathrooms and an eat-in kitchen/diner.

The property offers a fantastic opportunity to create an impressive family home located perfectly between Chelsea, South Kensington and centrally within Earl's Court.

The building further benefits from a lift and this particular apartment owns a share of freehold.

Local Information

The property is located approximately 0.3 miles away from Earl's Court Tube Station (Piccadilly & District Line) and approximately 0.2 miles away from West Brompton Station (Overground & District Line).

The property is perfectly located for Marks & Spencer's Simply Food (approximately 0.2 miles) and a selection of local shops, bars and restaurants, The Finborough Theatre which is 0.2 miles away and a charming Farmers Market which runs every Sunday.

To the East of the property you are a short distance from South Kensington and to the South of the property you are a short distance from Chelsea. Kensington is also conveniently located to the North of the property.

Tenure

Share of Freehold

Local Authority

The Royal Borough of Kensington and Chelsea

Energy Performance

EPC Rating = D

Viewing

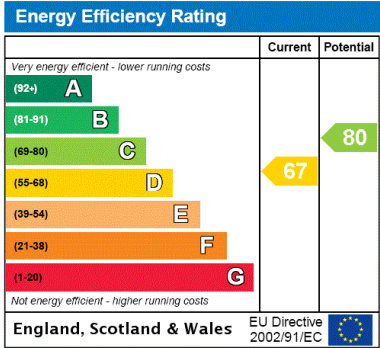
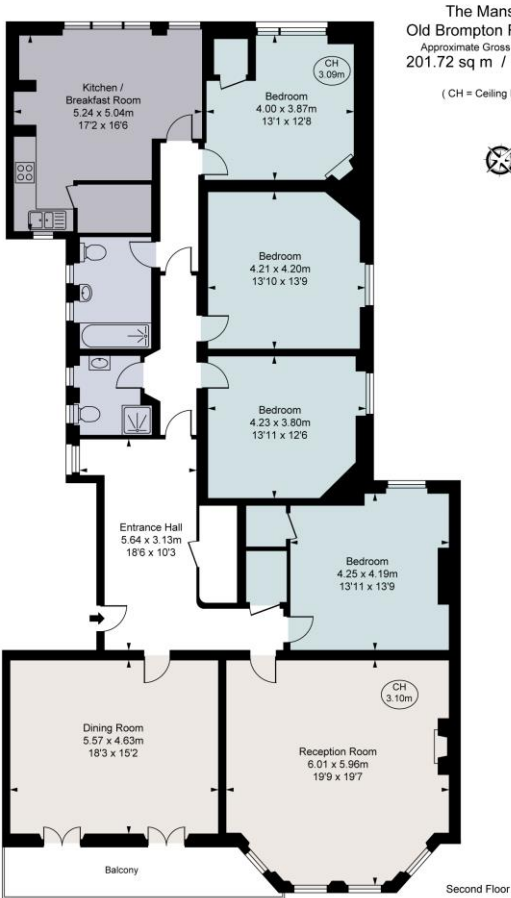
All viewings will be accompanied and are strictly by prior arrangement through Savills Earl's Court Office.
Telephone: +44 (0) 20 7578 6900.





The Mansions, 252 Old Brompton Road, London, SW5
Gross Internal Area 2171 sq ft, 201.7 m²

Earl's Court
+44 (0) 20 7578 6900
dan.carrington@savills.com



Important Notice Savills, its clients and any joint agents give notice that 1: They are not authorised to make or give any representations or warranties in relation to the property either here or elsewhere, either on their own behalf or on behalf of their client or otherwise. They assume no responsibility for any statement that may be made in these particulars. These particulars do not form part of any offer or contract and must not be relied upon as statements or representations of fact. 2: Any areas, measurements or distances are approximate. The text, photographs and plans are for guidance only and are not necessarily comprehensive. It should not be assumed that the property has all necessary planning, building regulation or other consents and Savills have not tested any services, equipment or facilities. Purchasers must satisfy themselves by inspection or otherwise. 20201014ANIL

