



Located on the first floor of this attractive mansion block, this three bedroom/three bathroom apartment offers impressive open plan living accommodation. Leasehold.

**Roland Mansions, Old Brompton Road, London**

£3,100,000 Leasehold (83 years remaining)





### About this property

The accommodation comprises a welcoming entrance hall, an incredible double reception room with an open plan kitchen, three double bedrooms, two en suite bathrooms and an additional guest bathroom.

The apartment offers impressive ceiling heights and an excellent overall feeling of space and style. Features include an exposed brick chimney breast and four bay windows facing south/east

### Local Information

Roland Mansions is conveniently located within approximately 0.3 miles from Gloucester Road Tube Station. The property also benefits from a selection of local shops and restaurants nearby.

### Tenure

Leasehold (83 years remaining)

### Local Authority

The Royal Borough of Kensington and Chelsea

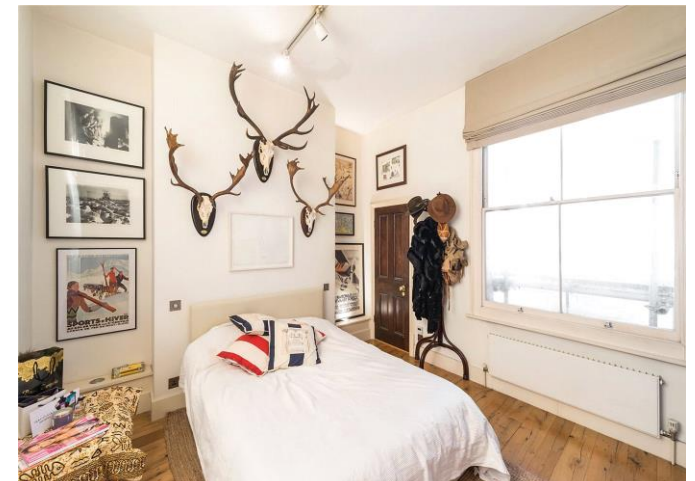
### Energy Performance

EPC Rating = E

### Viewing

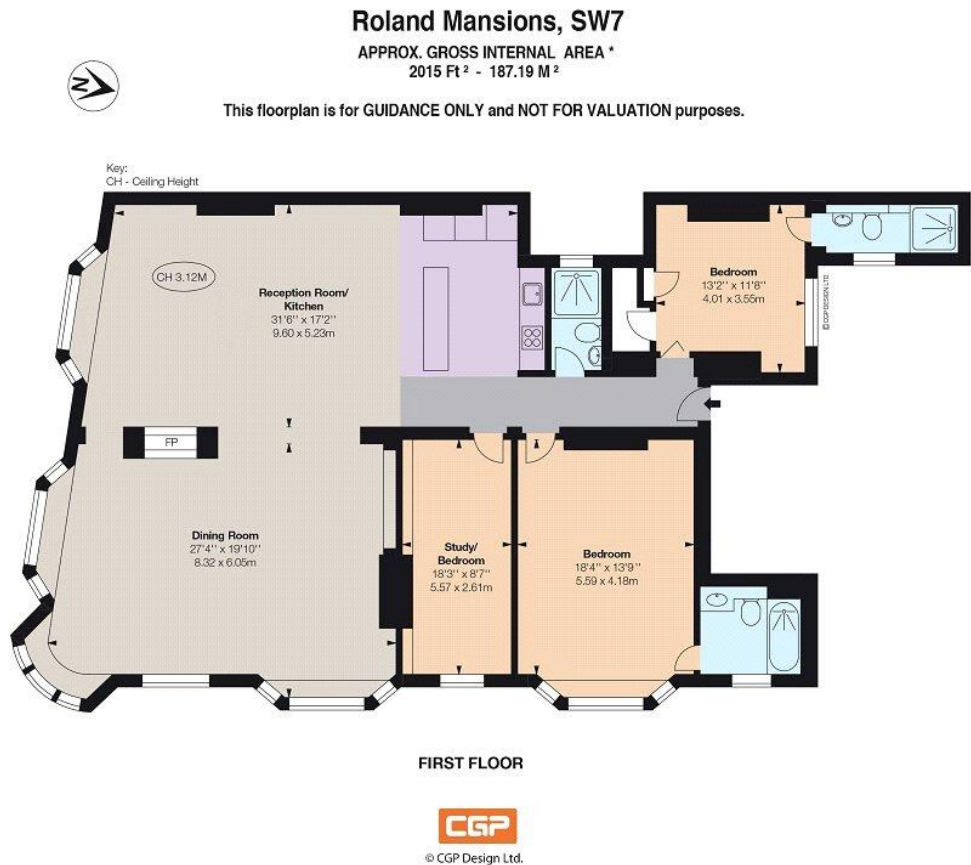
All viewings will be accompanied and are strictly by prior arrangement through Savills Earl's Court Office. Telephone: +44 (0) 20 7578 6900.

Photos taken Feb 2017









Measurements and features shown are approximate and for illustrative purposes only.  
Whilst we don't doubt the accuracy of this floor plan, no responsibility is taken for any error or omission.  
If there is any aspect of particular importance, you should carry out or commission your own inspection of the property.

Energy Efficiency Rating		
	Current	Potential
Very energy efficient - lower running costs		
(92+) <b>A</b>		
(81-91) <b>B</b>		
(69-80) <b>C</b>		
(55-68) <b>D</b>		65
(39-54) <b>E</b>	45	
(21-38) <b>F</b>		
(1-20) <b>G</b>		
Not energy efficient - higher running costs		
England, Scotland & Wales		EU Directive 2002/91/EC

**Important Notice** Savills, its clients and any joint agents give notice that 1: They are not authorised to make or give any representations or warranties in relation to the property either here or elsewhere, either on their own behalf or on behalf of their client or otherwise. They assume no responsibility for any statement that may be made in these particulars. These particulars do not form part of any offer or contract and must not be relied upon as statements or representations of fact. 2: Any areas, measurements or distances are approximate. The text, photographs and plans are for guidance only and are not necessarily comprehensive. It should not be assumed that the property has all necessary planning, building regulation or other consents and Savills have not tested any services, equipment or facilities. Purchasers must satisfy themselves by inspection or otherwise. 20200904ANIL

