



A truly impressive two double bedroom apartment with a remarkable open-expanse of living space and access to the stunning communal gardens

**Gledhow Gardens, London, SW5**

£2,000,000 Share of Freehold





### About this property

Gledhow Gardens is undoubtedly one of the areas most prestigious residential addresses. The northern terrace (Nos. 10 - 17) was developed by the highly regarded John Spicer in 1874 and shares similar architecture with addresses such as The Boltons and The Little Boltons. This particular apartment, that one enters on the 2nd floor is of one of only two detached buildings along the northern terrace with southerly views over the communal gardens, providing an incredible degree of grandeur and space throughout.

The accommodation is laterally spread across the third floor of the building with the entrance conveniently located on the second floor. The vast reception room spans across the entire width of the back of the building. In the center of the apartment there is a natural dining area comfortably large enough for an eight seated table. In addition to the impressive living space there is also a separate kitchen, two double bedrooms, a master en suite bathroom and an additional shower room. At the highest point the ceilings within this apartment extend to over 3.8 meters lending a unique almost penthouse-esque quality to the space

The building benefits from the use of a stunning communal garden square as well as being within the catchment area for Bousfield Primary School.

*Catchment set 2019-present*

### Local Information

Gledhow Gardens is superbly located for both Gloucester Road tube station, approximately 0.3 miles and South Kensington station, approximately 0.6 miles away. Gledhow Gardens is also ideally situated for access to the London's West End and the A4 to Heathrow.

### Tenure

Share of Freehold

### Local Authority

The Royal Borough of Kensington and Chelsea

### Energy Performance

EPC Rating = D

### Viewing

All viewings will be accompanied and are strictly by prior arrangement through Savills Earl's Court Office.  
Telephone: +44 (0) 20 7578 6900.

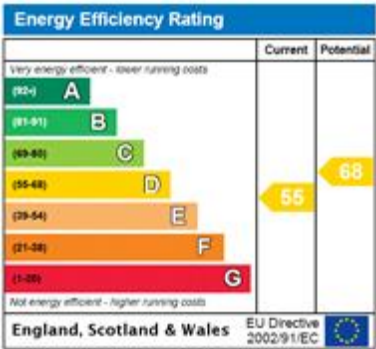
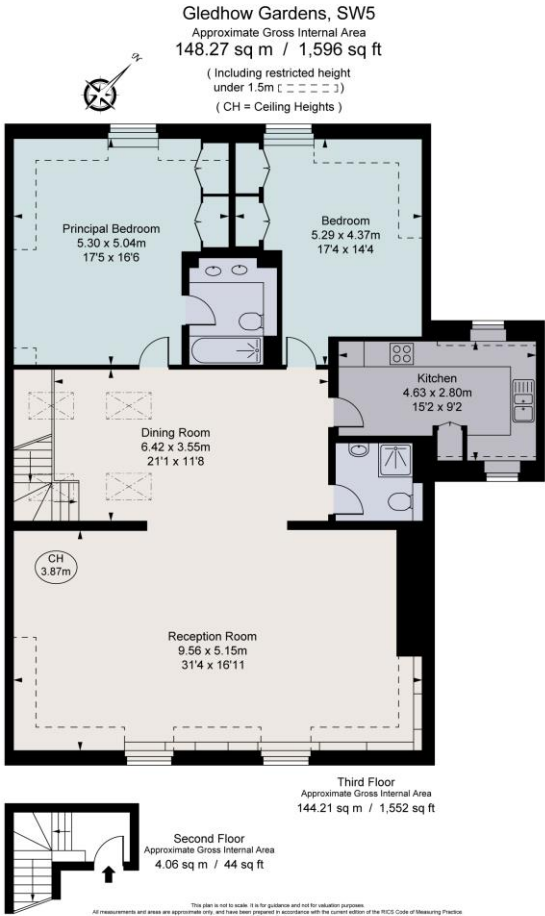






Gledhow Gardens, London, SW5  
Gross Internal Area 1596 sq ft, 148.27 m²

Earl's Court  
+44 (0) 20 7578 6900  
dan.carrington@savills.com



**Important Notice** Savills, its clients and any joint agents give notice that 1: They are not authorised to make or give any representations or warranties in relation to the property either here or elsewhere, either on their own behalf or on behalf of their client or otherwise. They assume no responsibility for any statement that may be made in these particulars. These particulars do not form part of any offer or contract and must not be relied upon as statements or representations of fact. 2: Any areas, measurements or distances are approximate. The text, photographs and plans are for guidance only and are not necessarily comprehensive. It should not be assumed that the property has all necessary planning, building regulation or other consents and Savills have not tested any services, equipment or facilities. Purchasers must satisfy themselves by inspection or otherwise. 20210309ANIL

