



A superb ground floor one bedroom apartment located in Lillie Square which is one of the most impressive new build developments in the area.

Columbia Gardens, London, SW6

£695,000 Leasehold (993 years remaining)



Reception room/Kitchen
Bedroom
Bathroom
Balcony

Local Information

0.2 miles from West Brompton and 0.4 miles from Earl's Court stations. Heathrow, City and Gatwick airport within 60 minutes travel time.

About this property

The accommodation comprises open plan living room/kitchen/dining room, bedroom, bathroom. The property is finished to a very high standard and benefits from many modern amenities such as a concierge service and a gym.

Tenure

Leasehold (993 years remaining)

Local Authority

The London Borough of Hammersmith and Fulham

Energy Performance

EPC Rating = B

Viewing

All viewings will be accompanied and are strictly by prior arrangement through Savills Earl's Court Office.
Telephone: +44 (0) 20 7578 6900.

Photos taken: July 2017





Columbia Gardens, London, SW6
Gross Internal Area 551 sq ft, 51.2 m²

Earl's Court
+44 (0) 20 7578 6900
dan.carrington@savills.com



Columbia Gardens, SW6
Approximate Gross Internal Area
51.1 sq m / 551 sq ft

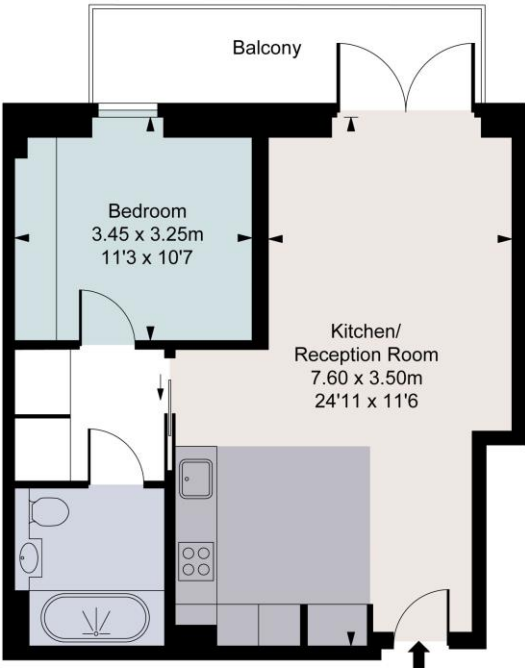


ILLUSTRATION FOR IDENTIFICATION PURPOSES ONLY
ALL MEASUREMENTS AND AREA FIGURES SUPPLIED BY OTHERS. ACCURACY IS NOT GUARANTEED.
THIS PLAN MUST NOT BE REPRODUCED BY ANY OTHER PERSON WITHOUT PERMISSION

Energy Efficiency Rating		
	Current	Potential
Very energy efficient - lower running costs		
(92+) A		
(81-91) B	84	84
(69-80) C		
(55-68) D		
(39-54) E		
(21-38) F		
(1-20) G		
Not energy efficient - higher running costs		
England, Scotland & Wales		EU Directive 2002/91/EC

Important notice Savills, its clients and any joint agents give notice that 1: They are not authorised to make or give any representations or warranties in relation to the property either here or elsewhere, either on their own behalf or on behalf of their client or otherwise. They assume no responsibility for any statement that may be made in these particulars. These particulars do not form part of any offer or contract and must not be relied upon as statements or representations of fact. 2: Any areas, measurements or distances are approximate. The text, photographs and plans are for guidance only and are not necessarily comprehensive. It should not be assumed that the property has all necessary planning, building regulation or other consents and Savills have not tested any services, equipment or facilities. Purchasers must satisfy themselves by inspection or otherwise. 20200219ANIL

