

COLEHERNE COURT, THE LITTLE BOLTONS, LONDON, SW5



A WELL-PROPORTIONED TWO-BEDROOM GROUND FLOOR APARTMENT LOCATED ON THE HIGHLY DESIRABLE 'THE LITTLE BOLTON' SIDE OF THIS POPULAR MANSION BLOCK. CATCHMENT AREA FOR BOUSFIELD

The bright apartment offers a spacious entrance hall, double reception room, two bedrooms, two bathrooms and a separate kitchen. The property benefits from a stunning communal garden and a share of freehold. It is in the catchment area of the 'Outstanding'-rated Bousfield School.

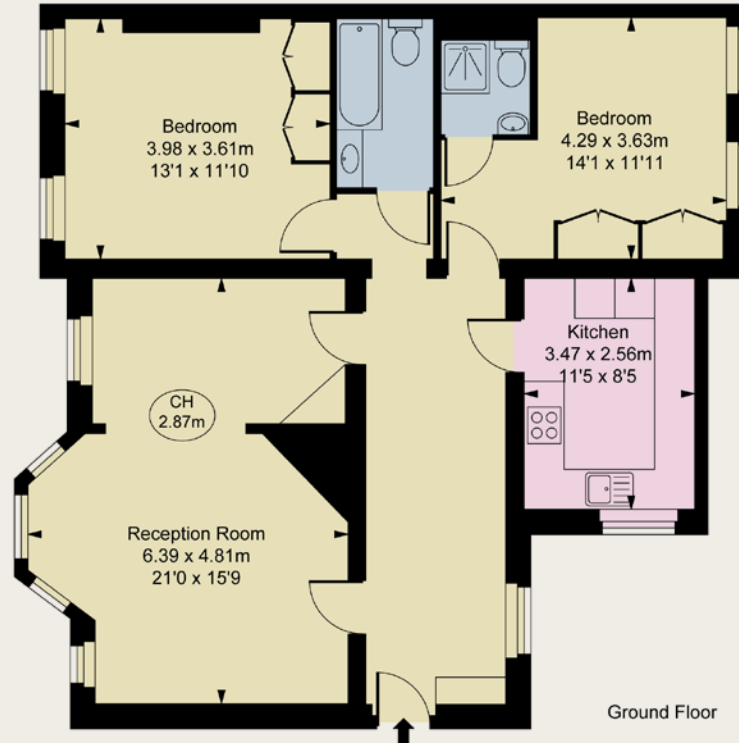
Coleherne Court is a famous mansion block – former home of Princess Diana - located on the borders of Chelsea, South Kensington and Earl's Court. It has excellent public transport links, including to the City, West End and Heathrow. It is within walking distance of Fulham Road, Kings Road and Queen's Gate that leads up to Hyde Park and Kensington Gardens. The apartment is located on the prestigious Little Boltons side of the block.





**Coleherne Court,
The Little Boltons, SW5**
Approximate Gross Internal Area
90.24 sq m / 971 sq ft

(CH = Ceiling Heights)



This plan is not to scale. It is for guidance and not for valuation purposes.
All measurements and areas are approximate only, and have been prepared in accordance with the current edition of the RICS Code of Measuring Practice
© Fulham Performance

- ◆ Entrance Hall
- ◆ Double reception room
- ◆ Separate kitchen
- ◆ Master bedroom with en suite
- ◆ Second bedroom
- ◆ Second bathroom

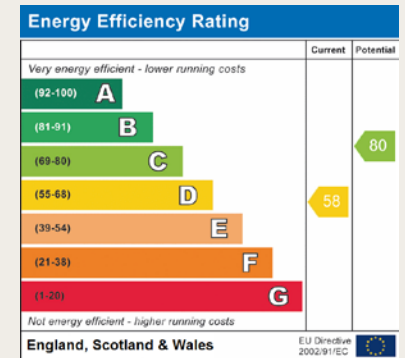
Tenure: Share of freehold

Price: £1,895,000

Local Authority: Royal Borough of Kensington and Chelsea

Energy Performance: A copy of the full Energy Performance Certificate is available upon request.

Viewing: Strictly by appointment with Savills



Savills, their clients and any joint agents give notice that: 1. They are not authorised to make or give any representations or warranties in relation to the property either here or elsewhere, either on their own behalf or on behalf of their client or otherwise. They assume no responsibility for any statement that may be made in these particulars. These particulars do not form part of any offer or contract and must not be relied upon as statements or representations of fact. 2. Any areas, measurements or distances are approximate. The text, images and plans are for guidance only and are not necessarily comprehensive. It should not be assumed that the property has all necessary planning, building regulation or other consents and Savills have not tested any services, equipment or facilities. Purchasers must satisfy themselves by inspection or otherwise.190501AO

Brochure by fourwalls-group.com

Savills Earls Court
237 Earls Court Road,
Kensington London, SW5 9AH
earlscourt@savills.com
02075 786 902

savills.co.uk

