

COLLINGHAM PLACE

LONDON SW5





A beautiful and newly refurbished two bedroom flat arranged over two floors and providing in excess of 1,100 sq ft

This flat is arranged over the top two floors of an impressive period property. The accommodation has been very thoughtfully styled and arranged to make the most of the generous proportions.

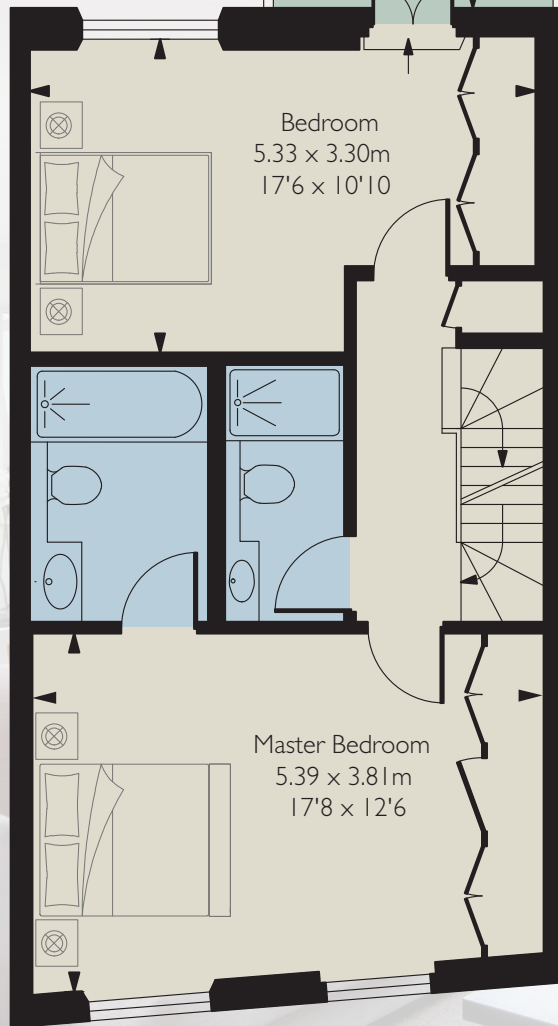
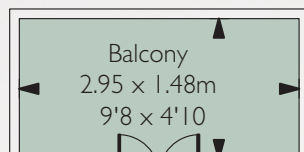
The flat comprises one floor which is entirely given over to an open plan kitchen / dining / reception room, filled with contemporary touches such as the remote controlled fireplace. The other floor comprises

the master bedroom (17.8 ft x 12.6 ft) with en suite bathroom, a second double bedroom with double doors opening onto a balcony and a further shower room.

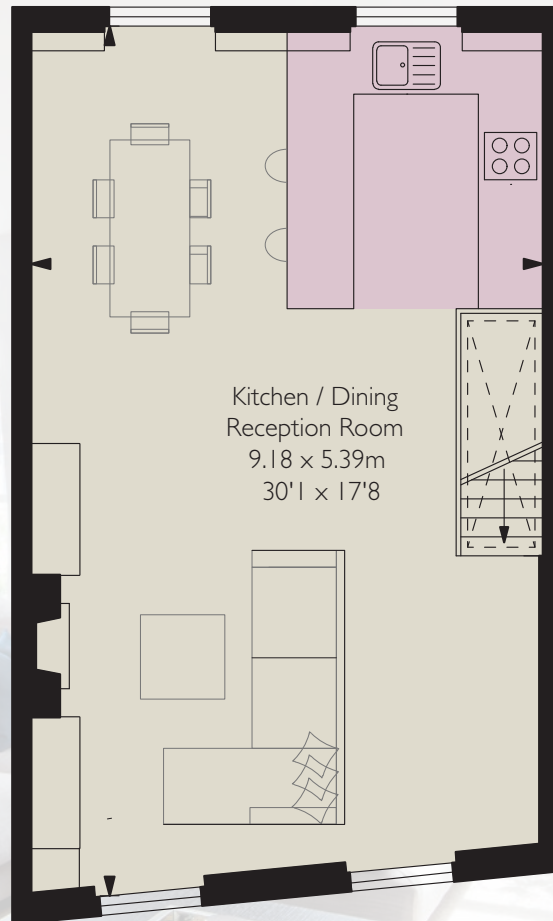
Collingham Place is in close proximity to South Kensington, with its local shops and amenities and excellent transport links that both Gloucester Road and Earl's Court have to offer. Collingham Place is also within easy reach of Hyde Park.

- Reception room/kitchen/dining room
- Master bedroom suite
- Further double bedroom
- Further shower room
- Balcony
- EPC Rating C
- Approximate GIA 1,122 sq ft / 104.20 sq m

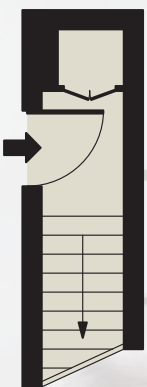




Third Floor



Fourth Floor



Second Floor
Entrance

Important Notice: Savills, their clients and any joint agents give notice that: 1. They have no authority to make or give any representations or warranties in relation to the property either here or elsewhere, either on their own behalf or on behalf of the client or otherwise. These particulars do not form part of any offer or contract and must not be relied upon as statements or representations of fact. 2. Any areas, measurements or distances are approximate. The text, photographs and plans are for guidance only and are not necessarily comprehensive. It should not be assumed that the property has all necessary planning, building regulation or other consents and Savills have not tested any services, equipment or facilities. Purchasers must satisfy themselves by inspection or otherwise. September 2016. CGP15126-FSA4-16S. Brochure by CGP.CO 020 7222 7222.

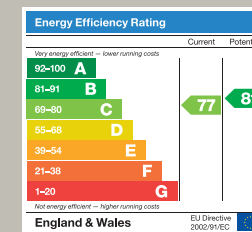
TERMS

Price On Application

Tenure: Leasehold
with approximately
157 years remaining

Local Authority:
The Royal Borough of
Kensington & Chelsea

**Approximate Gross
Internal Area**
1,122 sq ft / 104.20 sq m
(Including restricted
height under 1.5m)



Savills wish to inform
prospective buyers that
the seller is related to an
employee of the company



Savills Earl's Court
237 Earl's Court Road
London SW5 9AH
020 7578 6900
Savills Chelsea
196-200 Fulham Road
London SW10 9PN
020 7578 9000
savills.co.uk



STRUTT & PARKER

020 7373 1010

struttandparker.com/london

140 Fulham Road, London SW10 9PY