



A well appointed two bed and two bath apartment benefitting from off-street parking, gym and swimming pool, ideally located for Fulham or Earls Court.

**Brompton Park Crescent, Earls Court, London, SW6**

£460 pw (£1,993.33 pcm) plus fees apply, Furnished, Part Furnished  
Available from 19.12.2020





- Two bedrooms
- Two bathrooms
- Reception leading to patio area
- Separate eat-in kitchen
- Wooden floors
- Parking
- Gym

#### Local Information

The property is located approximately 0.9 miles from Earl's Court Underground Station and 0.4 miles from West Brompton Underground Station.

#### About this property

This charming apartment further benefits from a spacious reception room opening onto a private patio, separate fitted kitchen, large bedroom with ample built-in storage and modern shower room. Located in a gated development with off-street parking, gym and swimming pool within easy reach of transport at West Brompton station.

#### Furnishing

Furnished, Part Furnished

#### Local Authority

Hammersmith & Fulham  
Council Tax Band = F

#### Energy Performance

EPC Rating = C

#### Viewing

All viewings will be accompanied and are strictly by prior arrangement through Savills Earl's Court Lettings Office.  
Telephone: +44 (0) 20 7578 6910.

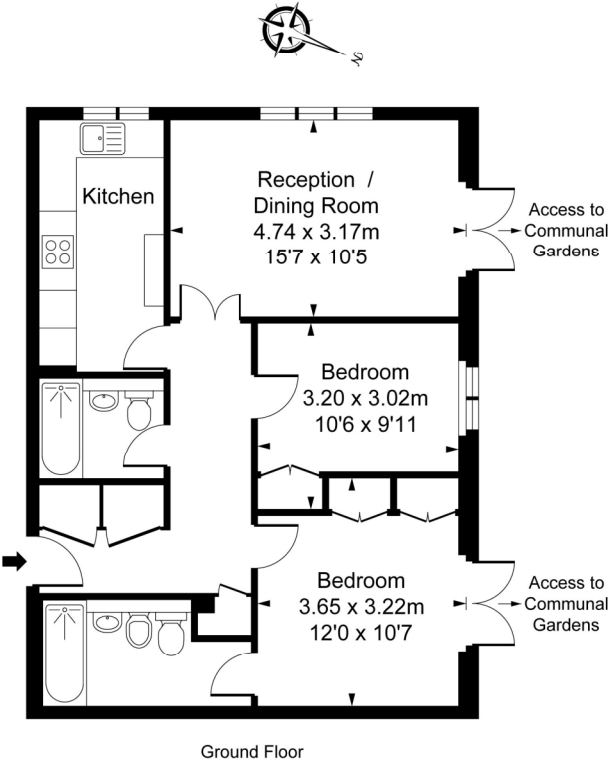




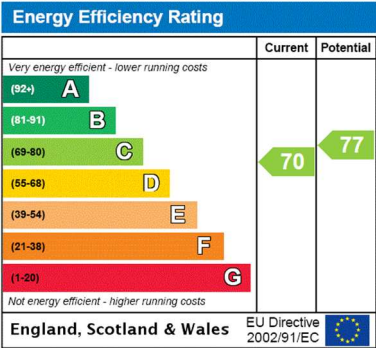


Brompton Park Crescent, Earls Court, London, SW6  
Gross Internal Area 600 sq ft, 55.7 m<sup>2</sup>

Brompton Park Crescent, SW6  
Approximate Gross Internal Area  
63.67 sq m / 685 sq ft



This plan is not to scale. It is for guidance only and not for valuation purposes.  
All measurements and areas are approximate only, and have been prepared in accordance with the current edition of the RICS Code of Measuring Practice.  
© Fulham Performance



**Important notice** Savills, their clients and any joint agents give notice that: 1. They are not authorised to make or give any representations or warranties in relation to the property either here or elsewhere, either on their own behalf or on behalf of their client or otherwise. They assume no responsibility for any statement that may be made in these particulars. These particulars do not form part of any offer or contract and must not be relied upon as statements or representations of fact. 2. Any areas, measurements or distances are approximate. The text, images and plans are for guidance only and are not necessarily comprehensive. It should not be assumed that the property has all necessary planning, building regulation or other consents and Savills have not tested any services, equipment or facilities. Prospective tenants must satisfy themselves by inspection or otherwise. Please note that the local area may be affected by aircraft noise, you should make your own enquiries regarding any noise within the area before you make any offer.

\*There are different rules and fees for different tenancy types. For details of our fees and charges please go to Savills.co.uk/tenant-fees. For more detailed information read our applicant guide at savills.co.uk/applicant-guide.  
Hard copy available on request. . 20201209AHKR

