



A modern three double bedroom Mews with two generous receptions, garage and roof terrace close to the amenities of Earls Court and Gloucester Road.

Hesper Mews, Earl's Court, London, SW5

£1,175 pw (£5,091.67 pcm) plus fees apply, Unfurnished
Available from 30.09.2020



- ****Furniture for illustrations purposes only****
- Three double bedrooms
- Three bathrooms
- Two Reception rooms
- Eat in kitchen
- Roof terrace
- Garage

Local Information

The property is located approximately 0.3 miles from Earl's Court Underground Station and 0.5 miles from West Brompton Underground Station.

About this property

A bright and modern throughout this spacious three bedroom Mews house benefits from three double bedrooms, two en suite's and a further family bathroom, a large open plan kitchen and dining room and a vast reception room. The property further benefits from a private roof terrace, a private garage and access to communal gardens.

Furnishing

Unfurnished

Local Authority

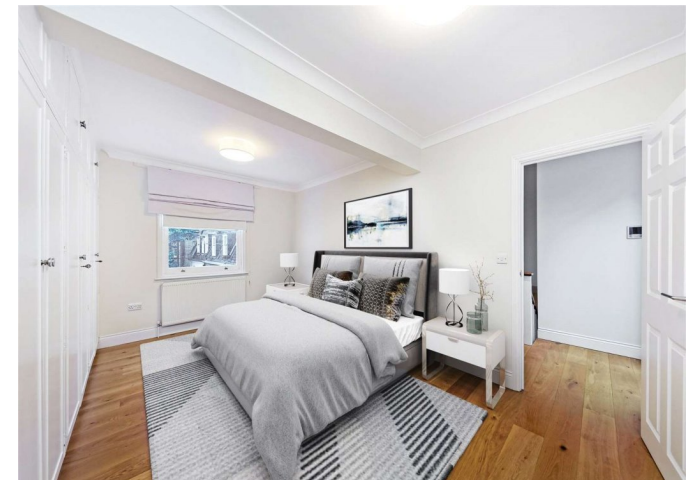
Royal Borough Of Kensington & Chelsea, London
Council Tax Band = H

Energy Performance

EPC Rating = D

Viewing

All viewings will be accompanied and are strictly by prior arrangement through Savills Earl's Court Lettings Office.
Telephone: +44 (0) 20 7578 6910.





Hesper Mews, Earl's Court, London, SW5
Gross Internal Area 1817 sq ft, 168.8 m²

Alex Hewitt
Earl's Court Lettings
+44 (0) 20 7578 6910
ahewitt@savills.com

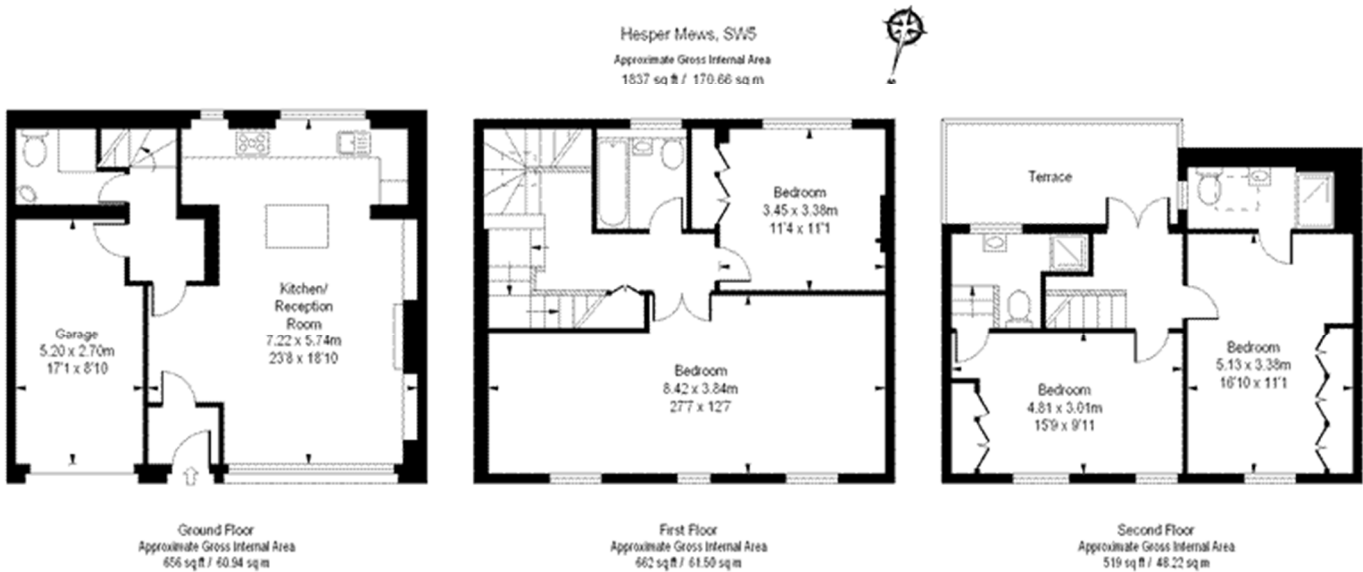
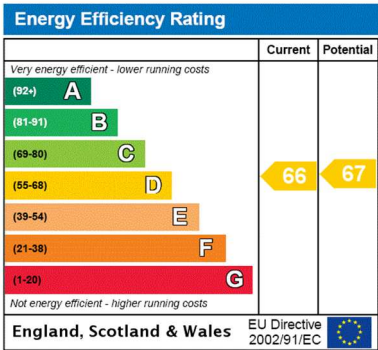


ILLUSTRATION FOR IDENTIFICATION PURPOSES ONLY

ALL MEASUREMENTS ARE MAXIMUM AND INCLUDE WINDOW BAYS AND WARDROBES WHERE APPLICABLE
THIS PLAN MUST NOT BE REPRODUCED BY ANY OTHER PERSON WITHOUT PERMISSION



Important notice Savills, their clients and any joint agents give notice that: 1. They are not authorised to make or give any representations or warranties in relation to the property either here or elsewhere, either on their own behalf or on behalf of their client or otherwise. They assume no responsibility for any statement that may be made in these particulars. These particulars do not form part of any offer or contract and must not be relied upon as statements or representations of fact. 2. Any areas, measurements or distances are approximate. The text, images and plans are for guidance only and are not necessarily comprehensive. It should not be assumed that the property has all necessary planning, building regulation or other consents and Savills have not tested any services, equipment or facilities. Prospective tenants must satisfy themselves by inspection or otherwise. Please note that the local area may be affected by aircraft noise, you should make your own enquiries regarding any noise within the area before you make any offer.

*There are different rules and fees for different tenancy types. For details of our fees and charges please go to Savills.co.uk/tenant-fees. For more detailed information read our applicant guide at savills.co.uk/applicant-guide.
Hard copy available on request. . 20201029AHKR

