



A charming three bedroom terraced house situated on a quiet cul-de-sac in East Sheen.

Lewin Road, East Sheen, London, SW14

Freehold

savills



**Double reception room • Kitchen/dining room • Three bedrooms • Family bathroom • West-facing garden**

**Local Information**

The excellent facilities offered by East Sheen are approximately 0.4 miles away from Lewin Road, where one can find a variety of shops, boutiques and restaurants; and the historic town of Richmond is 2 miles away.

For transport, Mortlake railway station is approximately 0.5 miles away providing a frequent service to Waterloo and Clapham Junction.

There are many excellent schools in the general vicinity including East Sheen Primary School, Sheen Mount Primary School, St Paul's, Tower House, Ibstock Place School, The German and Swedish Schools and Thomson House School.

The area also boasts numerous leisure and sporting facilities including The Roehampton Club, Sheen Tennis and Squash Club and a host of golf courses, including The Royal Mid Surrey Golf Club and Richmond Golf Club. The 2,300 acres of Richmond Park also allow many pursuits such as walking, running and riding.

**About this property**

The property is arranged over three floors, and comprises to the ground floor: a double reception room and a kitchen/dining room with exposed brickwork and bi-folding doors that open onto the rear garden.

The first floor comprises two bedrooms and a family bathroom, and there is a large double bedroom on the second floor.

\* Please note the photos shown are over six months old.

**Tenure**

Freehold

**Local Authority**

Richmond Upon Thames

**Energy Performance**

EPC Rating = D

**Viewing**

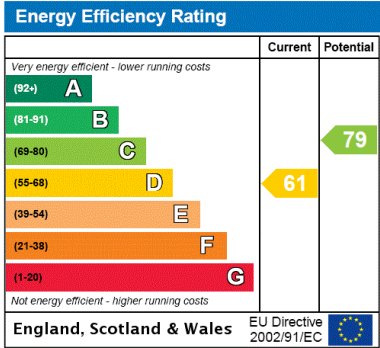
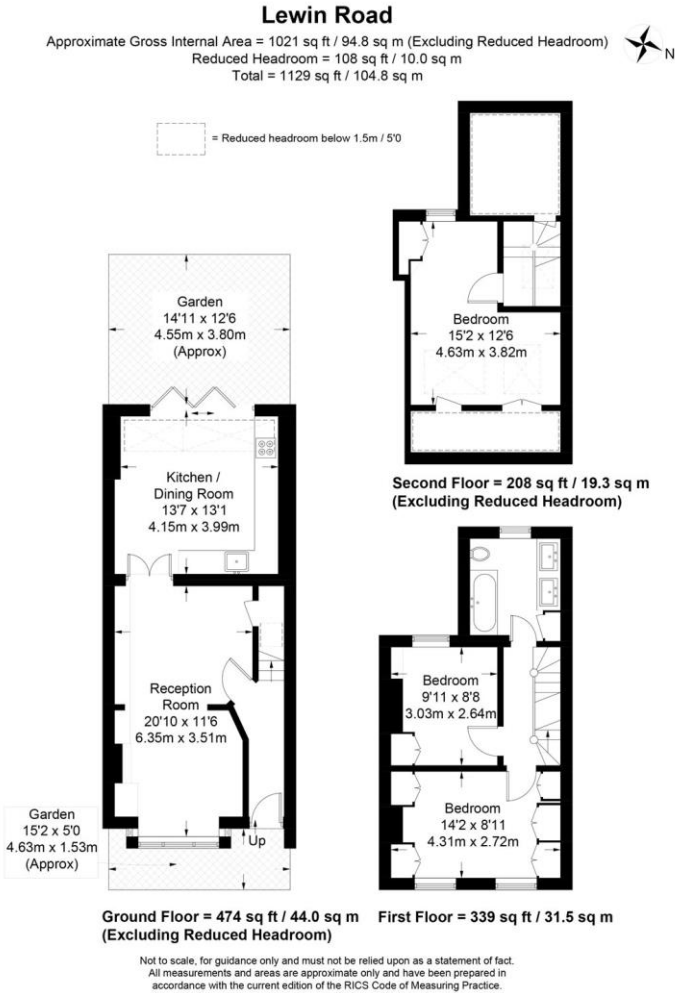
All viewings will be accompanied and are strictly by prior arrangement through Savills East Sheen Office.  
Telephone: +44 (0) 20 8018 7777.











**Important Notice** Savills, its clients and any joint agents give notice that 1: They are not authorised to make or give any representations or warranties in relation to the property either here or elsewhere, either on their own behalf or on behalf of their client or otherwise. They assume no responsibility for any statement that may be made in these particulars. These particulars do not form part of any offer or contract and must not be relied upon as statements or representations of fact. 2: Any areas, measurements or distances are approximate. The text, photographs and plans are for guidance only and are not necessarily comprehensive. It should not be assumed that the property has all necessary planning, building regulation or other consents and Savills have not tested any services, equipment or facilities. Purchasers must satisfy themselves by inspection or otherwise. 20210607JERA

