



**A BEAUTIFULLY LIGHT ONE BED APARTMENT WITH BALCONY IN THE BEAUTIFULLY LANDSCAPED GALLIARD HOMES DEVELOPMENT.**

MARINE WHARF EAST, SURREY QUAYS, SE16 7UD

**Guide Price £475,000 - Leasehold**





# A BEAUTIFULLY LIGHT ONE BED APARTMENT WITH BALCONY IN THE BEAUTIFULLY LANDSCAPED GALLIARD HOMES

MARINE WHARF EAST, SURREY QUAYS,  
SE16 7UD

**Guide Price £475,000 - Leasehold**

New Build • Open Plan Living Kitchen • Private Balcony • Communal Gardens • Cycle Parking

1 Bedrooms • 1 Bathrooms • 1 Reception

• EPC Rating = To be confirmed

## Description

Finished to Galliard Homes' premier specifications, with Smeg kitchen appliances, rustic engineered oak flooring, and recessed low energy down lighting, the flat will offer the balance of a village lifestyle with great transport links to Canary Wharf, the City and Central London.

Sitting between Greenland Dock and Surrey Quays, Marine Wharf is set in 1,800 sq m of open space. Every apartment has a terrace or balcony and access to cycle storage below the apartment block.

## Energy Performance

A copy of the full Energy Performance Certificate is available on request.

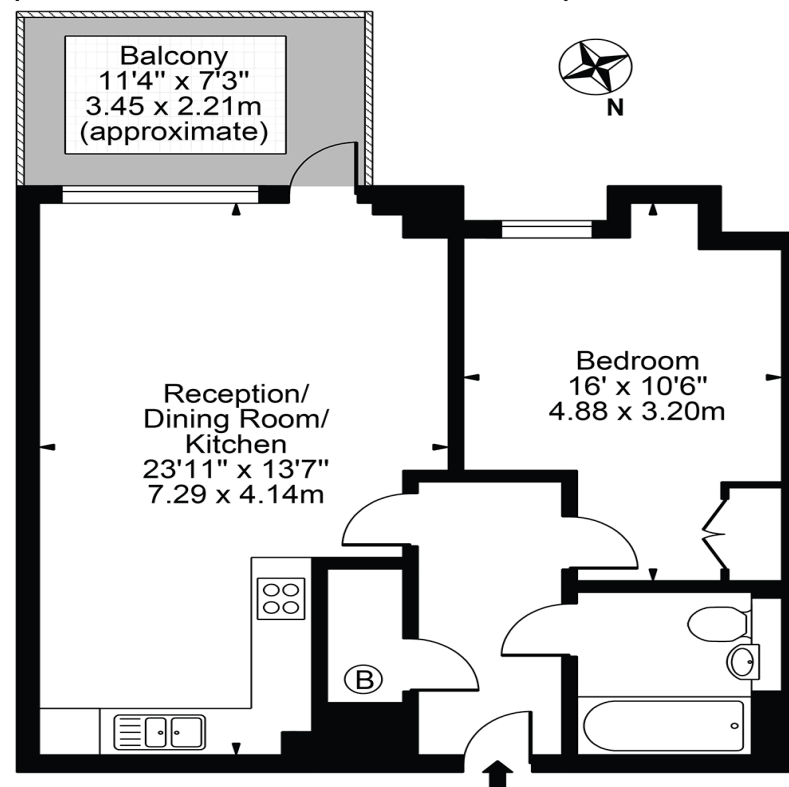
## Viewing

Strictly by appointment with Savills.



## Marine Wharf

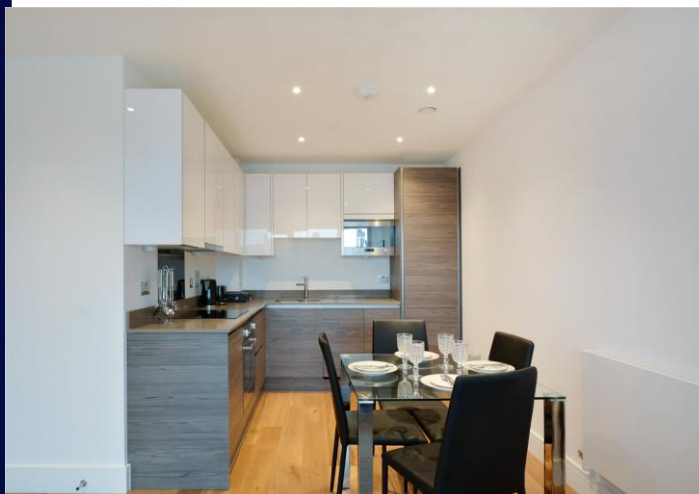
Approx. Gross Internal Area 553 Sq Ft - 51.38 Sq M



### Second Floor

For Illustration Purposes Only - Not To Scale

This floor plan should be used as a general outline for guidance only and does not constitute in whole or in part an offer or contract. Any intending purchaser or lessee should satisfy themselves by inspection, searches, enquiries and full survey as to the correctness of each statement. Any areas, measurements or distances quoted are approximate and should not be used to value a property or be the basis of any sale or let.



**Wapping**  
Chloe Luxon  
chloe.luxon@savills.com  
**+44 (0) 20 7456 6800**

**savills.co.uk**

---

Important notice: Savills, their clients and any joint agents give notice that:  
1: They are not authorised to make or give any representations or warranties in relation to the property either here or elsewhere, either on their own behalf or on behalf of their client or otherwise. They assume no responsibility for any statement that may be made in these particulars. These particulars do not form part of any offer or contract and must not be relied upon as statements or representations of fact. 2: Any areas, measurements or distances are approximate. The text, photographs and plans are for guidance only and are not necessarily comprehensive. It should not be assumed that the property has all necessary planning, building regulation or other consents and Savills have not tested any services, equipment or facilities. Purchasers must satisfy themselves by inspection or otherwise. 20201014GILE