



Recently renovated to a superb standard throughout is this three bedroom apartment within the award winning development Neo Bankside, located next to the Tate Modern.

**NEO Bankside, 60 Holland Street, London, SE1**

£1,800,000 Leasehold (985 years remaining)









Stunning enclosed winter terrace overlooking a beautiful landscaped garden • Recently renovated and interior designed throughout • Open plan reception room with fully integrated kitchen • Onsite amenities including 24 hour concierge, security service, a business centre, bike club and a resident's gym • Secure underground parking

#### Local Information

Neo Bankside is located along London's South Bank, the hub of London's most exciting landmarks including the Tate Modern and Shakespeare's Globe. You can find direct access to the City via the Millennium Bridge and nearby transport links include Blackfriars station, Thames river bus, Southwark Tube station and London Bridge (all within approx. 0.6 miles).

#### About this property

The property comprises: a fully fitted open plan kitchen to the spacious reception room with large doors opening into a winter garden; Principal Bedroom with an excellent range of storage and access to an en-suite shower room featuring a walk in shower; Second Bedroom also with an excellent range of storage and access to a further en-suite shower room; Third Bedroom also benefitting from good storage; Family Bathroom featuring a bath with shower attachment; each room offers unhindered views of the well maintained Communal Gardens.

NEO Bankside is an award-winning development on London's Southbank. Residents benefit from 24 hour security and concierge, residents only gymnasium, landscaped gardens, business centre and wine cellar.

#### Tenure

Leasehold(985 years remaining)

#### Local Authority

Southwark Council

#### Energy Performance

EPC Rating = C

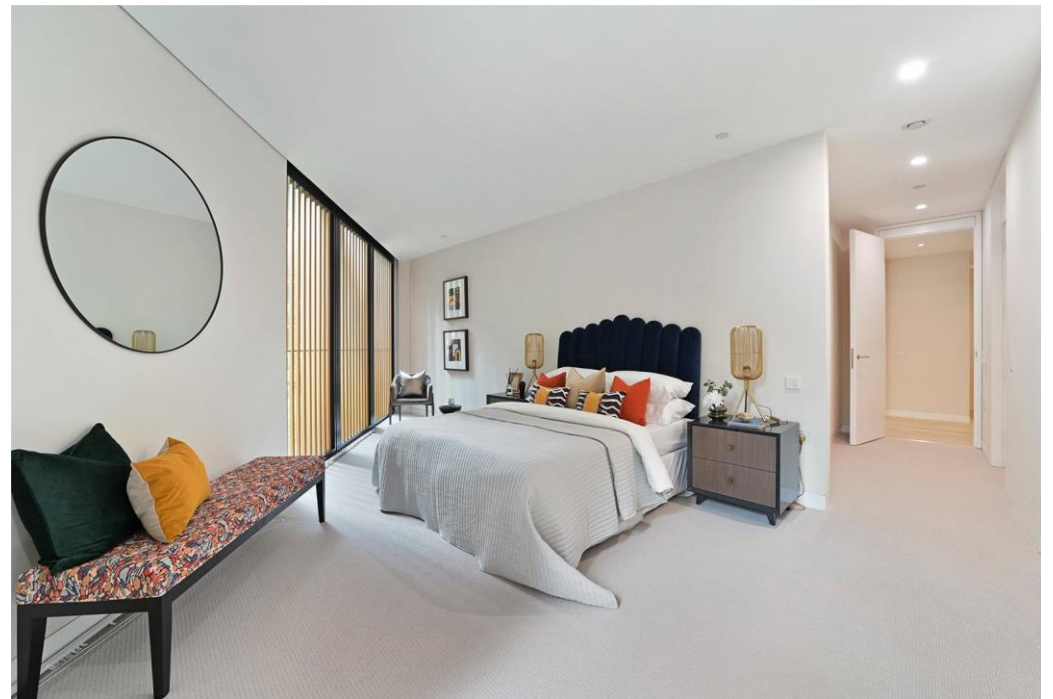
#### Viewing

All viewings will be accompanied and are strictly by prior arrangement through Savills Wapping Office.  
Telephone:  
+44 (0) 20 7456 6800.







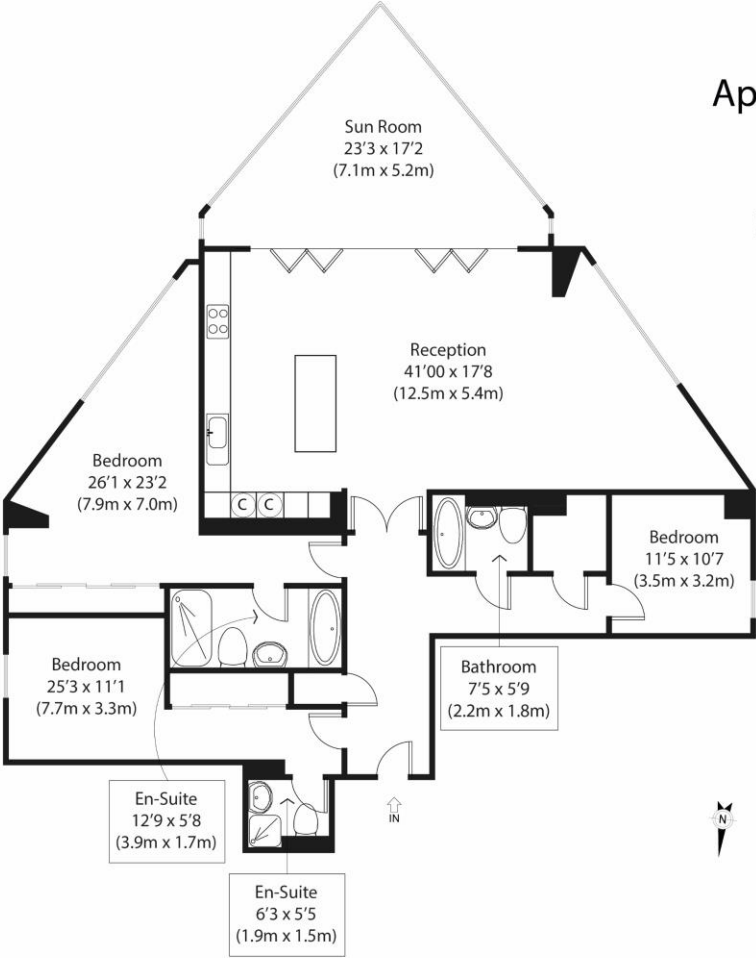




NEO Bankside, 60 Holland Street, London, SE1  
Gross Internal Area 1650 sq ft, 153.3 m²

Chloe Luxon  
Wapping  
+44 (0) 20 7456 6800  
chloe.luxon@savills.com


 |  savills | savills.co.uk



Approximate Gross Internal Area  
1650 sq ft (154 sq m)  
(First Floor)

Disclaimer: Floorplan measurements are approximate and are for illustrative purposes only. While we do not doubt the floor plan accuracy and completeness, you or your advisors should conduct a careful, independent investigation of the property in respect of monetary valuation. copyright www.ojphoto.co.uk



Energy Efficiency Rating		
	Current	Potential
Very energy efficient - lower running costs		
(92+) A		
(81-91) B		
(69-80) C	79	82
(55-68) D		
(39-54) E		
(21-38) F		
(1-20) G		
Not energy efficient - higher running costs		
England, Scotland & Wales	EU Directive 2002/91/EC 	

**Important Notice** Savills, its clients and any joint agents give notice that 1: They are not authorised to make or give any representations or warranties in relation to the property either here or elsewhere, either on their own behalf or on behalf of their client or otherwise. They assume no responsibility for any statement that may be made in these particulars. These particulars do not form part of any offer or contract and must not be relied upon as statements or representations of fact. 2: Any areas, measurements or distances are approximate. The text, photographs and plans are for guidance only and are not necessarily comprehensive. It should not be assumed that the property has all necessary planning, building regulation or other consents and Savills have not tested any services, equipment or facilities. Purchasers must satisfy themselves by inspection or otherwise. 20211029CLLX

