

A stunning nineteenth floor apartment offering superb views.

Discovery Dock Apartments East, 3 South Quay Square, Canary Wharf, E14 9RZ



2



2



1

| Guide Price £750,000-£800,000





# A stunning nineteenth floor apartment offering superb views.

Discovery Dock Apartments East, 3 South Quay Square, Canary Wharf, E14 9RZ

 2  2  1

Guide Price £750,000-£800,000



## About this property

Positioned on the nineteenth floor of this desirable dockside development, is this superb two bedroom apartment, which offers approximately 959 sq ft of well presented living accommodation. Upon entry you are greeted by a sizeable hallway, which provides plenty of fitted storage, with double doors then leading into a generous living room, further providing access to a quality fitted kitchen with a range of integrated appliances.

Additionally, there are two double bedrooms, with the principal boasting quality fitted wardrobes, and a limestone en suite, in addition to the main bathroom. Furthermore, there is underfloor heating, comfort cooling, and a sizeable private balcony which offers sublime views across the dock and on towards the Canary Wharf skyline, which looks even more picturesque of an evening. Residents will also benefit from access to a 24 hour concierge, a recently refurbished gymnasium, indoor pool and a secure allocated underground parking space.





A stunning nineteenth floor apartment offering superb views.

Discovery Dock Apartments East, 3 South Quay Square, Canary Wharf, E14 9RZ



2



2



1

Guide Price £750,000-£800,000



A stunning nineteenth floor apartment offering superb views.

Discovery Dock Apartments East, 3 South Quay Square, Canary Wharf, E14 9RZ

2 2 1

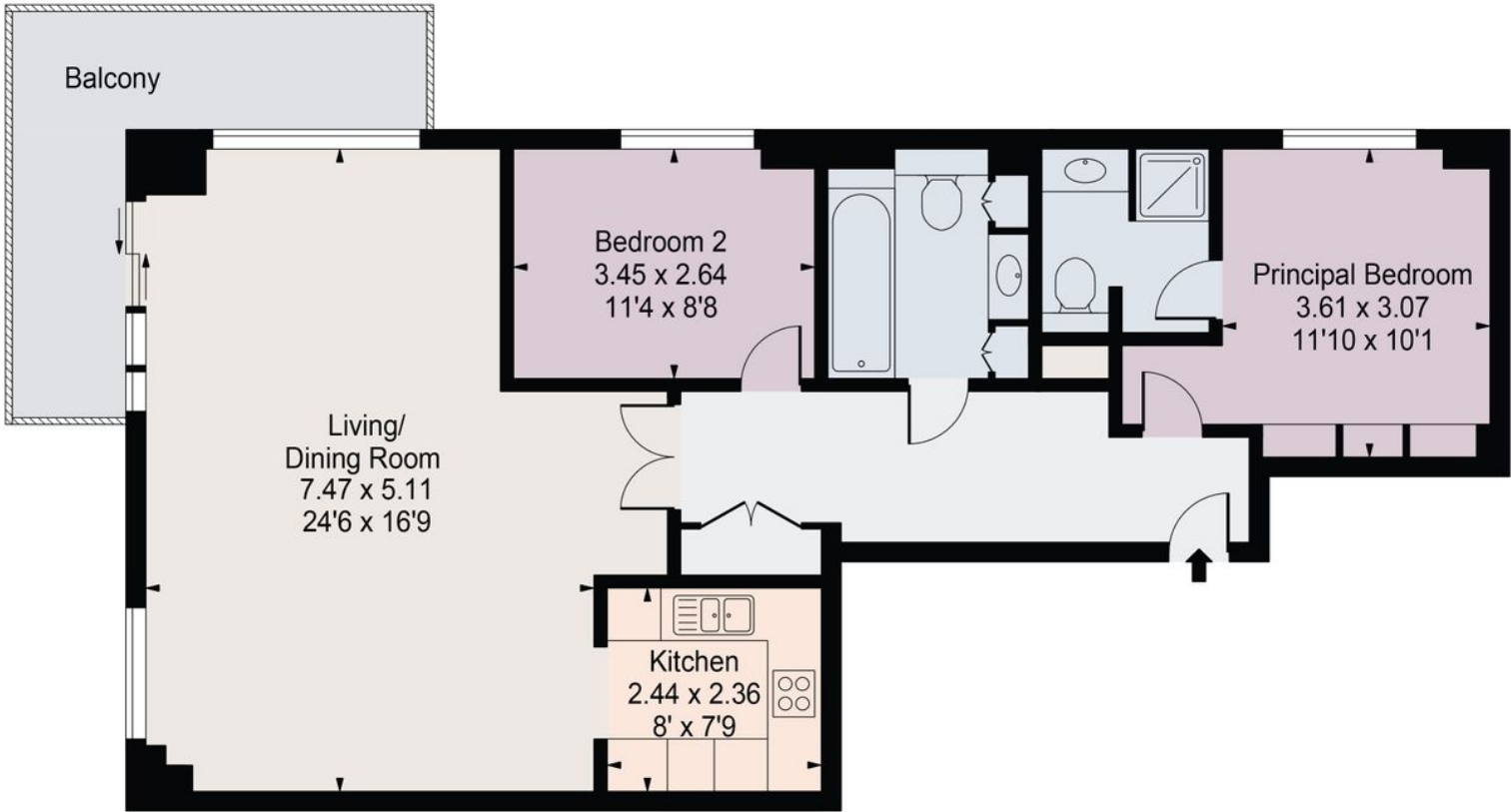
Guide Price £750,000-£800,000



Plans

Approx. gross internal floor area  
959 sq ft

Discovery Dock East  
Gross Internal Area(Approx)  
Total = 89.09 Sq m / 959 Sq ft



Nineteenth Floor

Surveyed and drawn in accordance with the International Property Measurement Standards (IPMS 2: Residential)  
For Illustration Purposes Only - Not To Scale



A stunning nineteenth floor apartment offering superb views.

Discovery Dock Apartments East, 3 South Quay Square, Canary Wharf, E14 9RZ

2 2 1

Guide Price £750,000-£800,000



## Property Details

### Local Authority

### Council Tax

Band = E

### Tenure

Leasehold (Lease Expiry 20xx)

### Ground Rent

£250 per annum

### Service Charge

£8,383.80 per annum

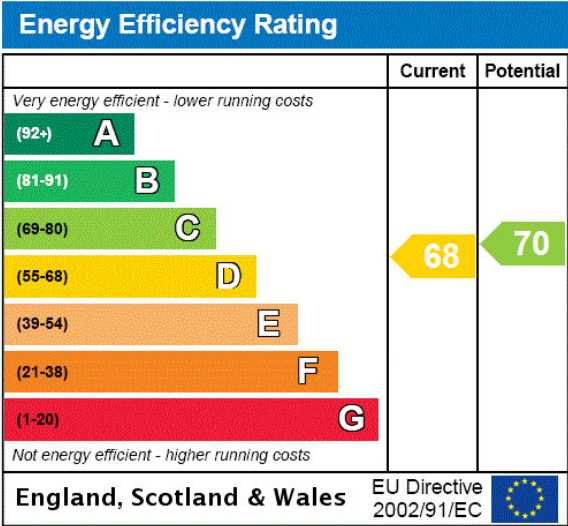
### Key Features

- Stunning two bedroom apartment
- Nineteenth floor
- No onward chain
- Secure allocated underground parking space
- Concierge / Gym / Pool

### EPC

EPC Rating = D

PROPERTY



A stunning nineteenth floor apartment offering superb views.

Discovery Dock Apartments East, 3 South Quay Square, Canary Wharf, E14 9RZ



Guide Price £750,000-£800,000



## Enquire



**Anthony Norton**

Canary Wharf

0207 531 2515

[anthony.norton@savills.com](mailto:anthony.norton@savills.com)

Viewing strictly by appointment

## More Information



[View on website](#)



[View Digital Brochure](#)



[Property Search](#)

Published: February 2023

Property Ref: CNS220249

powered by  
**FluxPro**

Important Notice: Savills, its clients and any joint agents give notice that 1: They are not authorised to make or give any representations or warranties in relation to the property either here or elsewhere, either on their own behalf or on behalf of their client or otherwise. They assume no responsibility for any statement that may be made in these particulars. These particulars do not form part of any offer or contract and must not be relied upon as statements or representations of fact. 2: Any areas, measurements or distances are approximate. The text, photographs and plans are for guidance only and are not necessarily comprehensive. It should not be assumed that the property has all necessary planning, building regulation or other consents and Savills have not tested any services, equipment or facilities. Purchasers must satisfy themselves by inspection or otherwise.