



A truly stunning penthouse apartment which offers exceptional living accommodation and amazing views towards the River Thames.

Tyger House, 7 New Warren Lane, London, SE18

£750,000 Leasehold (993 years remaining)



- Luxury penthouse apartment
- Pristine condition throughout
- Secure underground parking
- Amazing views
- No onward chain

Description

Internal viewing is the only way to appreciate this magnificent two bedroom penthouse apartment, which offers approximately 923 sq ft of well-presented living accommodation. Upon entering you are greeted by a generous hallway which boasts plenty of fitted storage, leading directly into a superb open plan living area, which houses a high specification kitchen, making the perfect space for entertaining. Additionally, there are two double bedrooms, both of which benefit from quality fitted wardrobes, plus there are two luxurious bathroom suites. Externally there is a vast wrap around balcony which spans the entire length of the apartment, and boasts amazing views towards the Thames, making the perfect spot for a glass of wine on a summers evening.

Berkeley Homes is a developer renowned for outstanding luxury, and this is reflected throughout the apartment, through various high end fixtures and fittings, and endless attention to detail ensuring the highest quality finish. Busy professionals also require first class facilities, and this development certainly does not disappoint.

All residents will benefit from access to a 24 hour concierge service, a large fully equipped gymnasium with state of the art equipment, a heated indoor pool with sauna and steam room, plus there is a private screening cinema. There is also the added advantage of secure underground parking.

Local Information

Royal Arsenal Riverside is, arguably, one of South East London's most exquisite riverside developments by Berkeley Homes with access to local amenities and restaurants, the forthcoming Crossrail station, the Thames Clipper Pier, plus the National Rail and DLR stations close by making Royal Arsenal Riverside one of the best connected developments in South East London. The area is currently undergoing an incredible transformation, with considerable amounts of investment, making this a really interesting and exciting prospect for the new owner.

All times and distances are approximate.

Tenure

Leasehold (993 years remaining)

Local Authority

Royal London Borough of Greenwich

Energy Performance

EPC Rating = B

Viewing

All viewings will be accompanied and are strictly by prior arrangement through Savills Canary Wharf Office.
Telephone: +44 (0) 20 7531 2530.



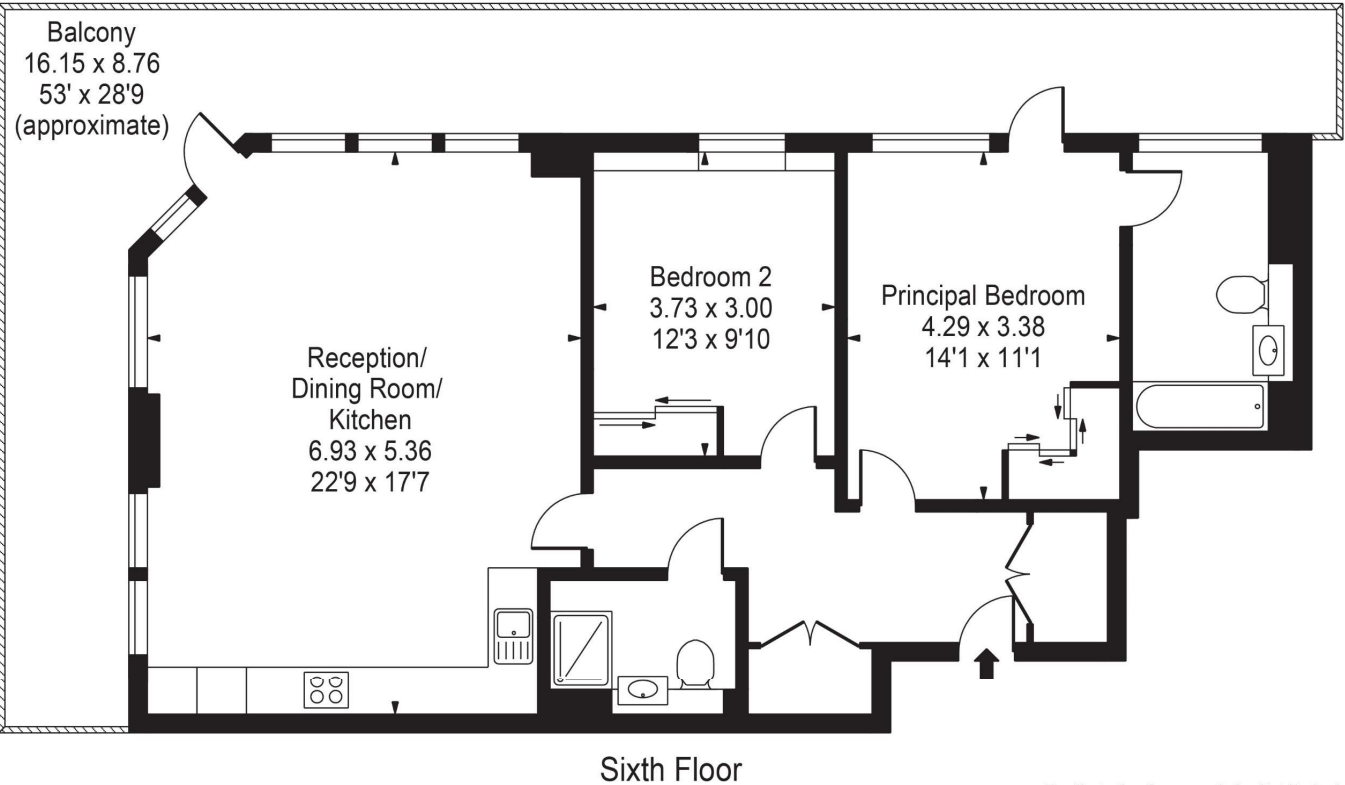


Tyger House, 7 New Warren Lane, London, SE18
Gross Internal Area 923 sq ft, 85.7 m²


Stephanie Dang
Canary Wharf
+44 (0) 20 7531 2530
stephanie.dang@savills.com

 |  savills | savills.co.uk

Tyger House, SE18
Gross Internal Area(Approx)
Total = 85.75 Sq m / 923 Sq ft



For Illustration Purposes Only - Not To Scale
Floorplan by Humble Spy Photography Ltd.
Produces exclusively for Savills

Energy Efficiency Rating		
	Current	Potential
Very energy efficient - lower running costs		
(92+) A		
(81-91) B	82	82
(69-80) C		
(55-68) D		
(39-54) E		
(21-38) F		
(1-20) G		
Not energy efficient - higher running costs		
England, Scotland & Wales	EU Directive 2002/91/EC 	

Important Notice Savills, its clients and any joint agents give notice that 1: They are not authorised to make or give any representations or warranties in relation to the property either here or elsewhere, either on their own behalf or on behalf of their client or otherwise. They assume no responsibility for any statement that may be made in these particulars. These particulars do not form part of any offer or contract and must not be relied upon as statements or representations of fact. 2: Any areas, measurements or distances are approximate. The text, photographs and plans are for guidance only and are not necessarily comprehensive. It should not be assumed that the property has all necessary planning, building regulation or other consents and Savills have not tested any services, equipment or facilities. Purchasers must satisfy themselves by inspection or otherwise. 20220426JEAR

