



A magnificent triplex apartment which boasts a substantial private roof terrace with views overlooking the London skyline.

Meridian Point, Creek Road, Greenwich, London, SE8

£675,000 Leasehold (980 years remaining)



- Substantial three bedroom triplex apartment
- Amazing private roof terrace
- Secure underground parking
- £3000 pa service charge
- Must be seen to be appreciated

Description

Internal viewing is the only way to appreciate this substantial three bedroom apartment which offers approximately 1486 sq ft of well presented living accommodation set across three floors. On offer is a generous fitted kitchen / diner which houses a range of fitted appliances, a fantastic mezzanine living room plus a separate study, perfect for those working from home. There are also three double bedrooms, and three quality bathroom suites. Additionally, there are vast floor to ceiling windows which help enhance the natural lighting throughout, plus there is ample storage space available.

External space is exceptional with generous private balconies leading directly off both the kitchen / diner and principle bedroom suite, and in addition there is a substantial private roof terrace offering amazing views across the London skyline, making it the perfect spot for a few drinks of a summers evening.

The apartment benefits from conservative service charge levels, a long lease, secure underground parking, and is also EWS1 compliant.

Local Information

Ideally located, there are number of local shops, restaurants and bars, plus Waitrose supermarket which is just a few minutes walk away. Greenwich DLR is approximately 0.3 miles away, offering access into Canary Wharf within 12 minutes and Bank within less than 20 minutes.

All times and distances are approximate.

Tenure

Leasehold (980 years remaining)

Local Authority

Royal London Borough of Greenwich

Energy Performance

EPC Rating = C

Viewing

All viewings will be accompanied and are strictly by prior arrangement through Savills Canary Wharf Office.

Telephone: +44 (0) 20 7531 2530.





Meridian Point, Creek Road, Deptford, London, SE8
Gross Internal Area 1498 sq ft, 139.2 m²

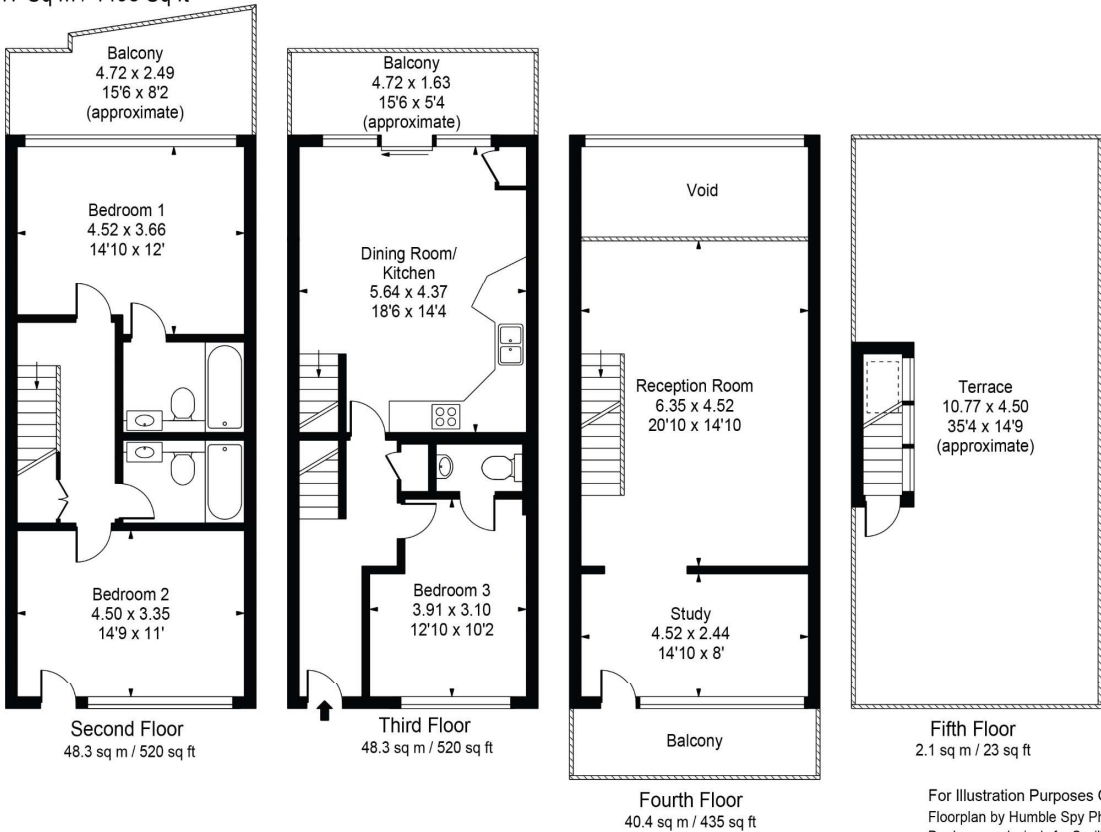
Antony Cherriman
Canary Wharf
+44 (0) 20 7531 2530
antony.cherriman@savills.com

onTheMarket.com | savills | savills.co.uk

Meridian Point

Gross Internal Area(Approx)

Total = 139.17 Sq m / 1498 Sq ft



Energy Efficiency Rating		
	Current	Potential
Very energy efficient - lower running costs		
(92+) A		
(81-91) B		
(69-80) C	79	81
(55-68) D		
(39-54) E		
(21-38) F		
(1-20) G		
Not energy efficient - higher running costs		
England, Scotland & Wales	EU Directive 2002/91/EC	

Important Notice Savills, its clients and any joint agents give notice that 1: They are not authorised to make or give any representations or warranties in relation to the property either here or elsewhere, either on their own behalf or on behalf of their client or otherwise. They assume no responsibility for any statement that may be made in these particulars. These particulars do not form part of any offer or contract and must not be relied upon as statements or representations of fact. 2: Any areas, measurements or distances are approximate. The text, photographs and plans are for guidance only and are not necessarily comprehensive. It should not be assumed that the property has all necessary planning, building regulation or other consents and Savills have not tested any services, equipment or facilities. Purchasers must satisfy themselves by inspection or otherwise. 20210803JEAR

