



A fantastic waterfront apartment, set within this highly desirable Berkeley homes development. Resident will benefit from access to a range of first class facilities.

Hampton Apartments, Duke of Wellington Avenue, Woolwich, London, SE18

£650,000 Leasehold (994 years remaining)



- Stunning three bedroom apartment
- Luxurious specification
- Direct views overlooking the Thames
- First class facilities
- No onward chain

Description

A superb three bedroom waterfront apartment in this highly desirable Berkeley homes development. The immediate reaction upon entering is how much natural light is offered within the apartment, which is predominantly absorbed via the floor to ceiling windows throughout. Internally there is an open plan living area, with a high specification kitchen which houses a range of designer appliances, two designer bathroom suites, plus there is plenty of storage on offer. Externally a full length balcony boasts sublime views overlooking the River Thames, and in addition there is a further balcony overlooking well manicured gardens.

Berkeley homes is a developer renowned for outstanding luxury, and this is reflected throughout the apartment, through various high end fixtures and fittings, and endless attention to detail ensuring the highest quality finish. Busy professionals also require first class facilities, and this development certainly does not disappoint.

All residents will benefit from access to a 24 hour concierge service, a large fully equipped gymnasium with state of the art equipment, a heated indoor pool and a private screening cinema.

The images in this brochure are for indicative purposes and were taken in 2018.

The current tenant of this property has been placed by our Savills Lettings Department.

PLEASE NOTE: We have received confirmation from the owner of this property that an EWS1 form has been provided by the Freeholder.

Local Information

Royal Arsenal Riverside is perfectly located for the forthcoming Elizabeth line Crossrail station which offers connections in to Canary Wharf of 8 minutes and Liverpool Street of 14 minutes. Additionally Royal Arsenal DLR is just 0.5 miles away while the Thames Clipper service is 0.3 miles away.

All times and distances are approximate.

Tenure

Leasehold (994 years remaining)

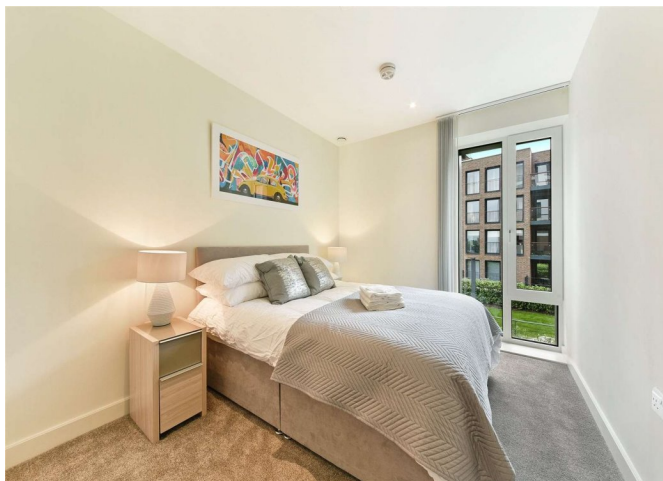
Energy Performance

EPC Rating = B

Viewing


All viewings will be accompanied and are strictly by prior arrangement through Savills Canary Wharf Office.

Telephone: +44 (0) 20 7531 2530.





Hampton Apartments, Duke of Wellington Avenue, Woolwich, London, SE18
Gross Internal Area 1001 sq ft, 93 m²

onTheMarket.com

savills

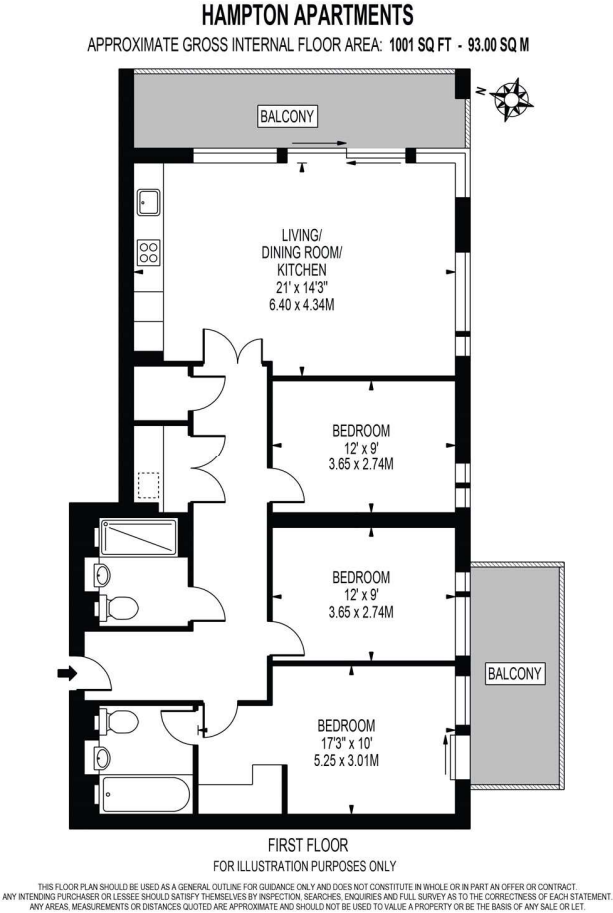
savills.co.uk


Stephanie Dang

Canary Wharf

+44 (0) 20 7531 2530

stephanie.dang@savills.com



Energy Efficiency Rating		
	Current	Potential
Very energy efficient - lower running costs		
(92+) A		
(81-91) B	87	87
(69-80) C		
(55-68) D		
(39-54) E		
(21-38) F		
(1-20) G		
Not energy efficient - higher running costs		
England, Scotland & Wales	EU Directive 2002/91/EC 	

Important Notice Savills, its clients and any joint agents give notice that 1: They are not authorised to make or give any representations or warranties in relation to the property either here or elsewhere, either on their own behalf or on behalf of their client or otherwise. They assume no responsibility for any statement that may be made in these particulars. These particulars do not form part of any offer or contract and must not be relied upon as statements or representations of fact. 2: Any areas, measurements or distances are approximate. The text, photographs and plans are for guidance only and are not necessarily comprehensive. It should not be assumed that the property has all necessary planning, building regulation or other consents and Savills have not tested any services, equipment or facilities. Purchasers must satisfy themselves by inspection or otherwise. 20221101JEAR

