



Offering approximately 960 sq ft of well proportioned living space, this stunning apartment is perfectly located for Canary Wharf. Residents will also benefit from a 24 hour concierge.

Discovery Dock Apartments East, 3 South Quay Square, London, E14

£660,000 Leasehold (979 years remaining)



- Larger than average two bedroom apartment
- Two Limestone bathroom suites
- Partial views of the dock
- Gym / concierge / pool
- Parking

Description

Positioned on the sixth floor of this desirable dockside development, is this superb two bedroom apartment, which offers approximately 960 sq ft of presented living accommodation. Upon entry you are greeted by a vast hallway, which provides plenty of fitted storage, this then leads into a generous living room, plus there is a quality fitted kitchen with a range of designer appliances.

Additionally, there are two double bedrooms, two limestone bathroom suites, underfloor heating plus a private balcony which offers partial views onto the dock. Residents will also benefit from access to a 24 hour concierge, a recently refurbished gymnasium, indoor pool and secure underground parking.

Local Information

Discovery Dock is perfectly located for all local amenities, such as shops, bars and restaurants. Canary Wharf station is just approximately 4 minutes away, offering convenient access to the City, West End and the upcoming Crossrail Elizabeth line.

All times and distances are approximate.

Tenure

Leasehold (979 years remaining)

Local Authority

Tower Hamlets

Energy Performance

EPC Rating = B

Viewing

All viewings will be accompanied and are strictly by prior arrangement through Savills Canary Wharf Office.

Telephone: +44 (0) 20 7531 2530.



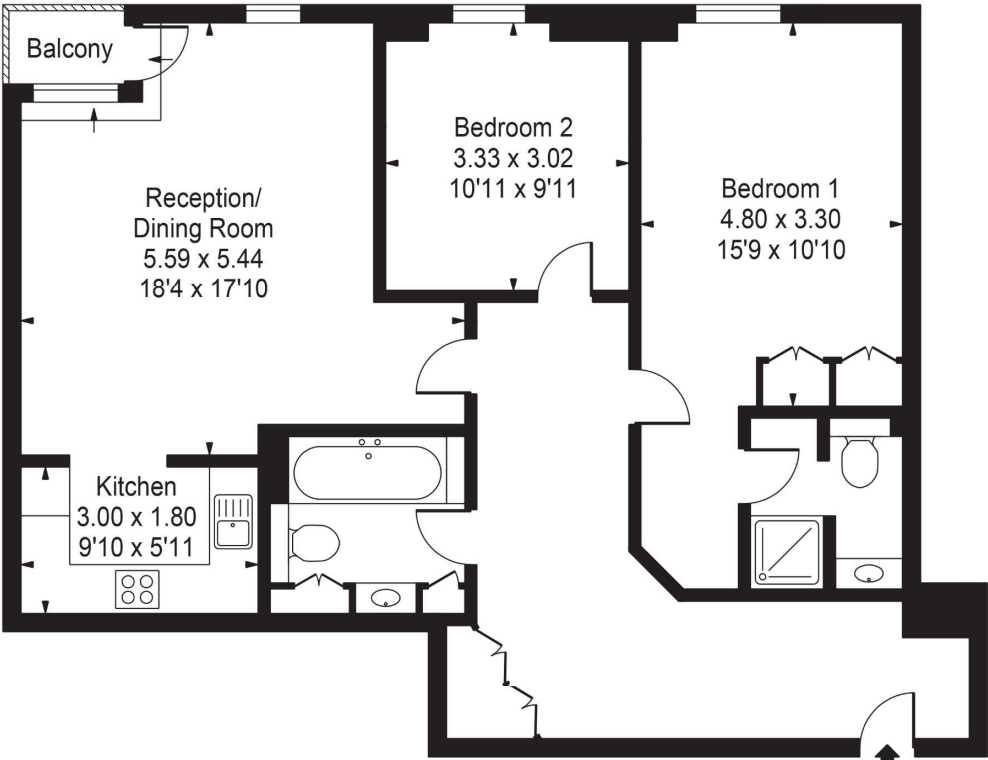


Discovery Dock Apartments East, 3 South Quay Square, London, E14
Gross Internal Area 960 sq ft, 89.2 m²

Antony Cherriman
Canary Wharf
+44 (0) 20 7531 2530
antony.cherriman@savills.com


 |  savills | savills.co.uk

Discovery Dock East
Gross Internal Area(Approx)
Total = 89.19 Sq m / 960 Sq ft



Sixth Floor

For Illustration Purposes Only - Not To Scale
Floorplan by Humble Spy Photography Ltd.
Produces exclusively for Savills

Energy Efficiency Rating		
	Current	Potential
Very energy efficient - lower running costs		
(92+) A		
(81-91) B	86	87
(69-80) C		
(55-68) D		
(39-54) E		
(21-38) F		
(1-20) G		
Not energy efficient - higher running costs		
England, Scotland & Wales		EU Directive 2002/91/EC 

Important Notice Savills, its clients and any joint agents give notice that 1: They are not authorised to make or give any representations or warranties in relation to the property either here or elsewhere, either on their own behalf or on behalf of their client or otherwise. They assume no responsibility for any statement that may be made in these particulars. These particulars do not form part of any offer or contract and must not be relied upon as statements or representations of fact. 2: Any areas, measurements or distances are approximate. The text, photographs and plans are for guidance only and are not necessarily comprehensive. It should not be assumed that the property has all necessary planning, building regulation or other consents and Savills have not tested any services, equipment or facilities. Purchasers must satisfy themselves by inspection or otherwise. 20210520JEAR

