



An outstanding period conversion which offers approximately 1370 sq ft of living space set across two floors.

Building 36A, Cadogan Road, London, SE18

Guide Price: Offers in Excess of £700,000 Leasehold (978 years remaining)

savills

- Stunning period conversion
- Retains plenty of original charm and character
- Parking
- 24 Hour concierge
- Gymnasium (small fee payable)
- Securely gated development

Description

Internal viewing is the only way to appreciate this stunning three bedroom duplex apartment which has been maintained in excellent order throughout. Internally the apartment spans to approximately 1370 sq ft, and it retains plenty of the original charm and character with high ceilings, exposed brickwork and large sash windows. Accommodation comprises of a large living room which is flooded with natural light, a separate fitted kitchen with integrated appliances, and three generous bedrooms, one of which is positioned upon a mezzanine floor.

Additionally, there are two bathrooms, secure parking, a 24 hour concierge and a resident's gymnasium (Small fee payable).

Local Information

Building 36a is a Grade II listed building set within a securely gated development, which is ideally positioned for a range of local shops bars and restaurants. Woolwich DLR is just 0.4 miles away providing swift access into both Canary Wharf and Bank. Alternatively the Thames Clipper service is within easy reach and offers great connectivity into London.

All times and distances are approximate.

Tenure

Leasehold (978 years remaining)

Local Authority

Royal London Borough of Greenwich

Energy Performance

EPC Rating = D

Viewing

All viewings will be accompanied and are strictly by prior arrangement through Savills Canary Wharf Office.
Telephone: +44 (0) 20 7531 2530.





Building 36A, Cadogan Road, London, SE18
Gross Internal Area 1370 sq ft, 127.3 m²

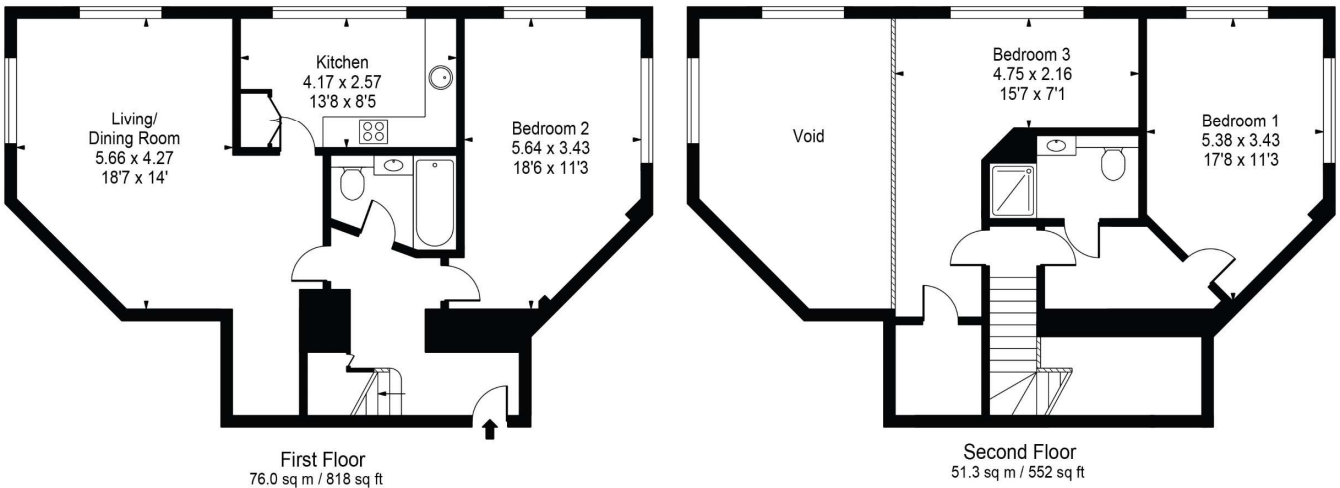
Stephanie Dang
Canary Wharf
+44 (0) 20 7531 2530
stephanie.dang@savills.com

 onTheMarket.com |  savills | savills.co.uk

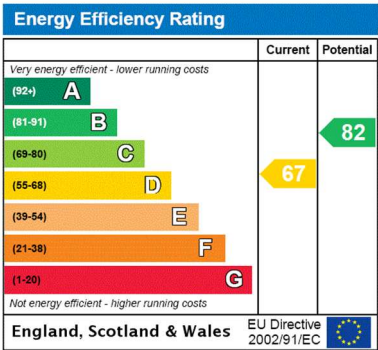
Cadogan Road

Gross Internal Area(Approx)

Total = 127.28 Sq m / 1370 Sq ft



For Illustration Purposes Only - Not To Scale
Floorplan by Humble Spy Photography Ltd.
Produces exclusively for Savills



Important Notice Savills, its clients and any joint agents give notice that 1: They are not authorised to make or give any representations or warranties in relation to the property either here or elsewhere, either on their own behalf or on behalf of their client or otherwise. They assume no responsibility for any statement that may be made in these particulars. These particulars do not form part of any offer or contract and must not be relied upon as statements or representations of fact. 2: Any areas, measurements or distances are approximate. The text, photographs and plans are for guidance only and are not necessarily comprehensive. It should not be assumed that the property has all necessary planning, building regulation or other consents and Savills have not tested any services, equipment or facilities. Purchasers must satisfy themselves by inspection or otherwise. 20210923JEAR

