



Situated in this luxurious modern development is this superb penthouse apartment, which offers approximately 1,220 sq ft of well proportioned living space, set across two floors.

Hugero Point, 2 Rennie Street, Greenwich, London, SE10

£850,000 Leasehold (990 years remaining)

savills

- Superb three bedroom penthouse
- High specification
- Two private balconies
- Concierge
- Parking

Description

Occupying the ninth and tenth floors of this modern residential development is this exceptional three bedroom penthouse, which is in pristine condition throughout. This amazing home boasts approximately 1,220 sq ft of living space, and offers great natural lighting throughout which is enhanced by the apartments dual aspect and large floor to ceiling windows. Internally, there is a fantastic open plan living space which is great for entertaining friends and family, which then leads directly out onto a generous private balcony.

Additionally, there are three spacious bedrooms, two high specification bathrooms, a separate w/c, plus plenty of fitted storage. Residents will also benefit from access to a concierge, and secure parking is included.

Please note: We have received confirmation that an EWS1 form has been provided by the Freeholder.

Local Information

Located within close proximity of the O2 Arena, providing a wide selection of bars and restaurants. Transport wise, North Greenwich Station offers great links into Canary Wharf and the City via both tube (Jubilee Line) and river bus (Thames Clipper).

All times and distances are approximate.

Tenure

Leasehold (990 years remaining)

Local Authority

Royal London Borough of Greenwich

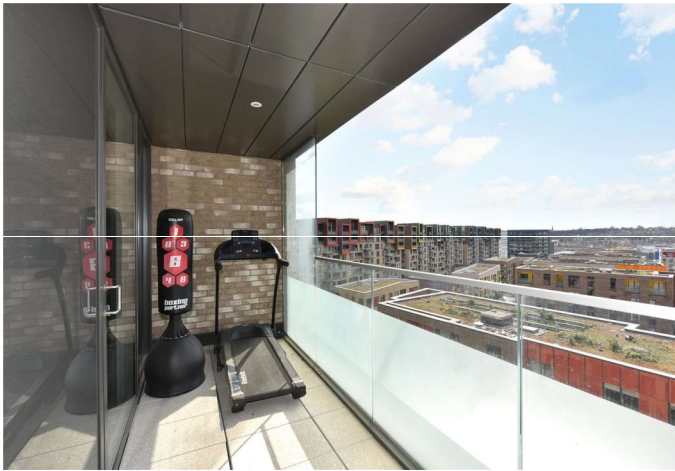
Energy Performance

EPC Rating = B

Viewing

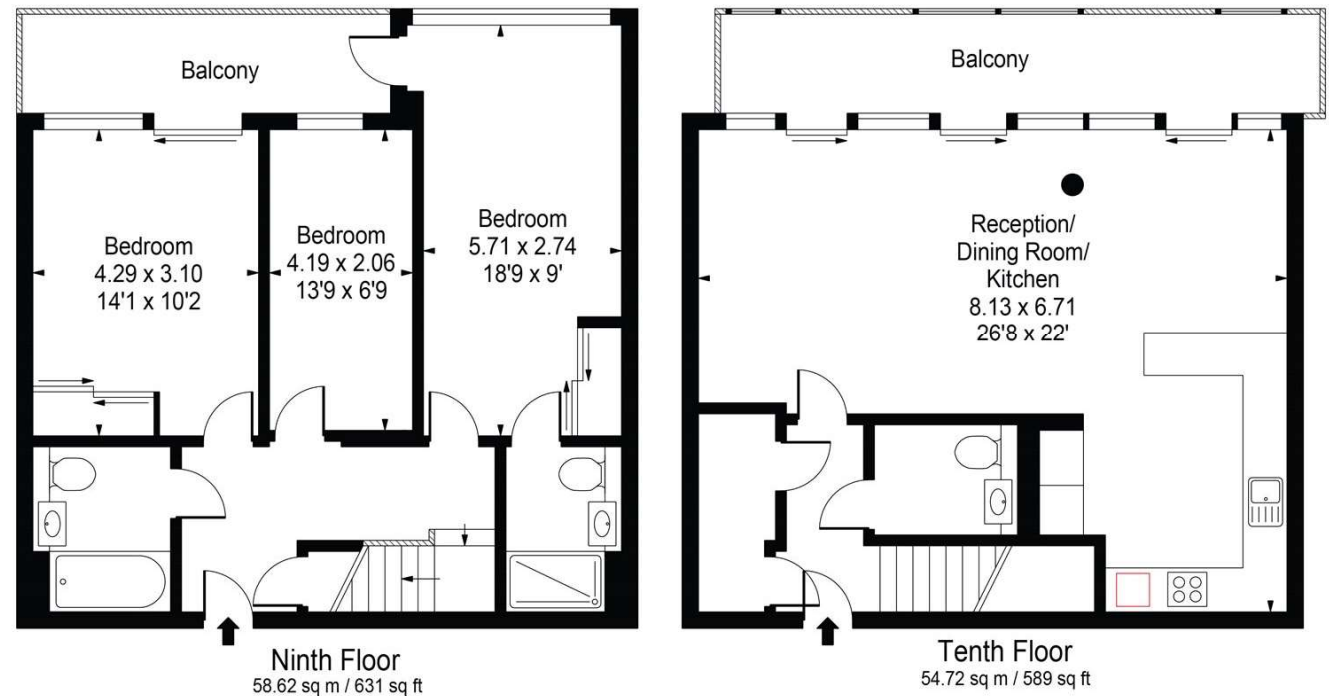
All viewings will be accompanied and are strictly by prior arrangement through Savills Canary Wharf Office.
Telephone: +44 (0) 20 7531 2530.





Hugero Point, 2 Rennie Street, Greenwich, London, SE10
Gross Internal Area 1220 sq ft, 113.3 m²

Hugero Point, SE10
Gross Internal Area(Approx)
Total = 113.34 Sq m / 1220 Sq ft



For Illustration Purposes Only - Not To Scale
Floorplan by Humble Spy Photography Ltd.
Produces exclusively for Savills

Energy Efficiency Rating		
	Current	Potential
Very energy efficient - lower running costs		
(92+) A		
(81-91) B		
(69-80) C	82	82
(55-68) D		
(39-54) E		
(21-38) F		
(1-20) G		
Not energy efficient - higher running costs		
England, Scotland & Wales	EU Directive 2002/91/EC	

Important Notice Savills, its clients and any joint agents give notice that 1: They are not authorised to make or give any representations or warranties in relation to the property either here or elsewhere, either on their own behalf or on behalf of their client or otherwise. They assume no responsibility for any statement that may be made in these particulars. These particulars do not form part of any offer or contract and must not be relied upon as statements or representations of fact. 2: Any areas, measurements or distances are approximate. The text, photographs and plans are for guidance only and are not necessarily comprehensive. It should not be assumed that the property has all necessary planning, building regulation or other consents and Savills have not tested any services, equipment or facilities. Purchasers must satisfy themselves by inspection or otherwise. 20210420JEAR

