



An outstanding penthouse apartment situated on frequently requested Greenwich Peninsula. Internally the apartment spans to approximately 987 sq ft and is presented to an extremely high standard.

**47 Pilot Walk, Greenwich, London, SE10**

£720,000 Leasehold (233 years remaining)

**savills**

- Stunning two bedroom penthouse
- Pristine condition throughout
- Perfectly located for Canary Wharf
- Secure underground parking
- 24 Hour concierge / residents gymnasium

### Description

Positioned up the 10th floor is this superb two bedroom penthouse apartment which was constructed in 2016 by Knight Dragon. Upon entry, you are greeted by a generous hallway which leads into a stunning open plan living area which is perfect for entertaining friends and family. There is a high specification German kitchen with a range of designer appliances and granite work surfaces, plus there is a much larger than average south facing private balcony. Additionally there are two designer bathroom suites, underfloor heating, a range of built in storage units, floor to ceiling windows, and any perspective purchaser will also benefit from a secure underground parking space, positioned directly next to the entrance of the building.

Residents will also benefit from access to a 24 hour concierge, and a fully equipped on-site gymnasium which offers state of the art equipment. There is also a crèche and there are multiple meeting rooms, which are ideal for residents who wish to conduct business from home.

### Local Information

Greenwich peninsula is a highly desirable location, which is positioned on the edge of the River Thames and within minutes of the O2 arena, which offers access to a wide range of shops, bars and restaurants. North Greenwich station is located within less than 0.5 miles, offering access into Canary Wharf in just 10 minutes, and to Bond Street in less than 30.

All times and distances are approximate.

### Tenure

Leasehold (233 years remaining)

### Local Authority

Royal London Borough of Greenwich

### Energy Performance

EPC Rating = B

### Viewing

All viewings will be accompanied and are strictly by prior arrangement through Savills Canary Wharf Office.

Telephone: +44 (0) 20 7531 2530.

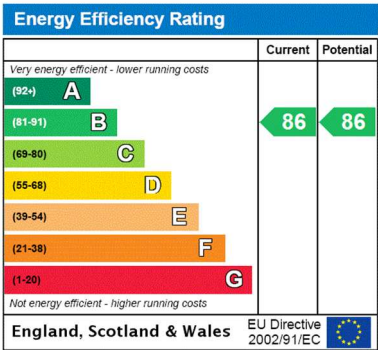
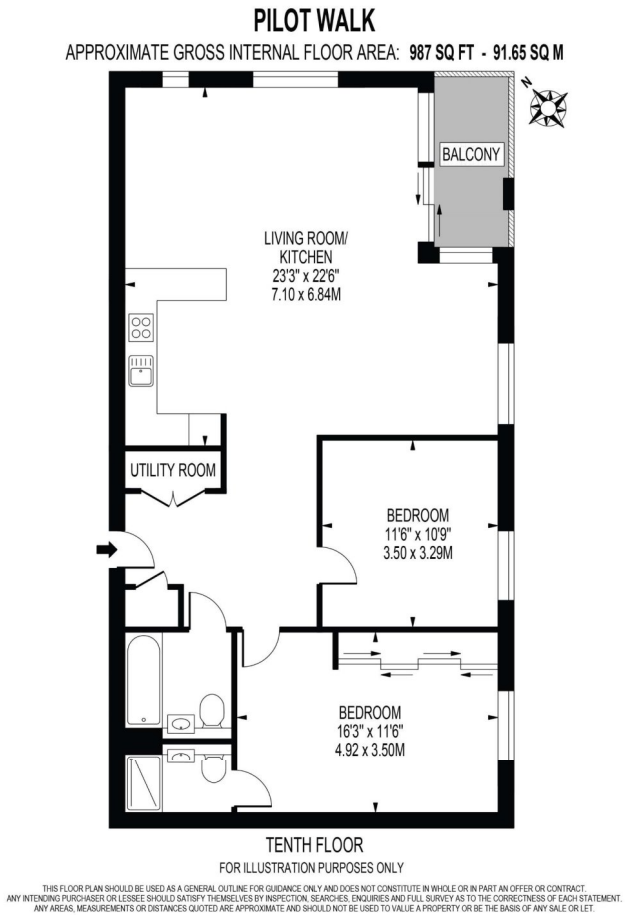




47 Pilot Walk, Greenwich, London, SE10  
Gross Internal Area 987 sq ft, 91.7 m<sup>2</sup>

Antony Cherriman  
Canary Wharf  
+44 (0) 20 7531 2530  
antony.cherriman@savills.com

 onTheMarket.com |  savills | savills.co.uk



**Important Notice** Savills, its clients and any joint agents give notice that 1: They are not authorised to make or give any representations or warranties in relation to the property either here or elsewhere, either on their own behalf or on behalf of their client or otherwise. They assume no responsibility for any statement that may be made in these particulars. These particulars do not form part of any offer or contract and must not be relied upon as statements or representations of fact. 2: Any areas, measurements or distances are approximate. The text, photographs and plans are for guidance only and are not necessarily comprehensive. It should not be assumed that the property has all necessary planning, building regulation or other consents and Savills have not tested any services, equipment or facilities. Purchasers must satisfy themselves by inspection or otherwise. 20210224JEAR

