



Internal viewing is the only way to appreciate this stunning waterfront penthouse, which offers vast living space spread across the top two floors of this highly desirable development.

Adriatic Apartments, 20 Western Gateway, London, E16

£750,000 Leasehold (139 years remaining)



- Stunning waterfront penthouse
- Vast private terrace
- Amazing views
- Secure parking
- Concierge
- Gym

Description

A fantastic two bedroom waterfront penthouse which offers approximately 1177 sq ft of living space spread across two floors. Internally the apartment has been kept in pristine condition and boasts a bright and airy feel throughout, further enhanced by the large floor to ceiling windows on offer. To the entry floor there is a large open plan living space, comprising of a high specification kitchen, this then leads out to a vast private south facing terrace which offers sublime views across the dock and on towards the Canary Wharf skyline. The upper floor consists of two generous double bedrooms both of which benefit from fitted wardrobes, plus there are two modern bathroom suites

Residents will also benefit from access to a 24 hour concierge, a fully equipped gymnasium, plus secure underground parking is included.

Please note: We have received confirmation from the owner of this property that an EWS1 form has been provided by the Freeholder.

Local Information

Royal Victoria offers a selection of local shops, bars and restaurants, and the DLR is located within just 0.25 miles, offering access into Canary Wharf in just 10 minutes, and into Bank in a little over 20. The area is going through huge regeneration, and with billions currently being invested locally, an expected 40,000 new jobs will be created within the area by 2030.

All times and distances are approximate.

Tenure

Leasehold (139 years remaining)

Local Authority

London Borough of Newham

Energy Performance

EPC Rating = C

Viewing

All viewings will be accompanied and are strictly by prior arrangement through Savills Canary Wharf Office.

Telephone: +44 (0) 20 7531 2530.





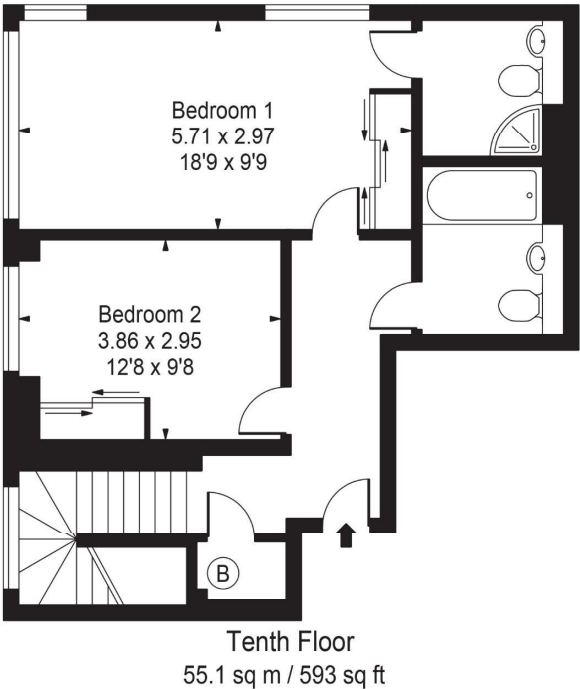
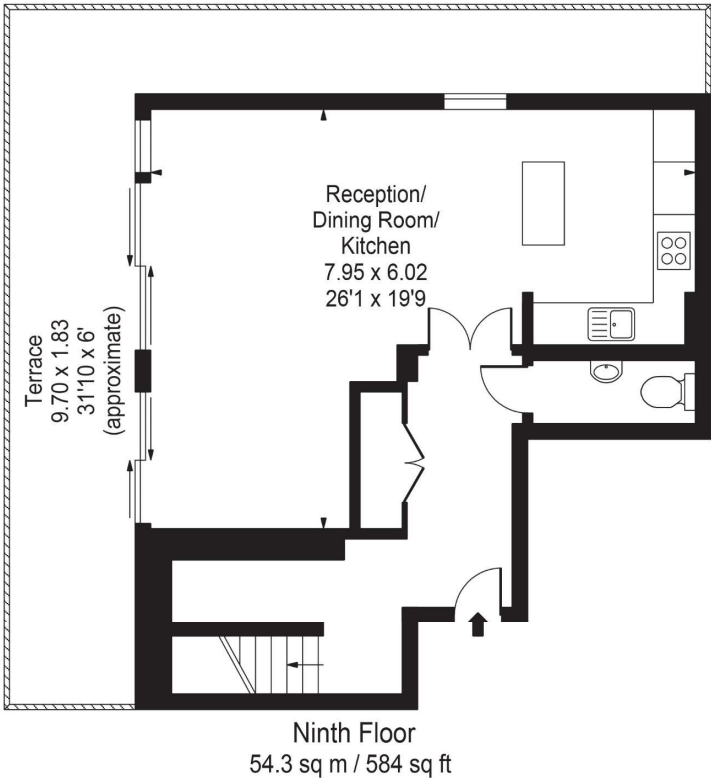
Adriatic Apartments, 20 Western Gateway, London, E16
Gross Internal Area 1177 sq ft, 109.3 m²

Eric Cheung
Canary Wharf
+44 (0) 20 7531 2530
eric.cheung@savills.com

onTheMarket.com | savills | savills.co.uk

Adriatic Apartments, Western Gateway

Gross Internal Area(Approx)
Total = 109.35 Sq m / 1177 Sq ft
For Illustration Purposes Only - Not To Scale
Floorplan by Humble Spy Photography Ltd.



Energy Efficiency Rating		
	Current	Potential
Very energy efficient - lower running costs		
(92+) A		
(81-91) B		
(69-80) C	80	81
(55-68) D		
(39-54) E		
(21-38) F		
(1-20) G		
Not energy efficient - higher running costs		
England, Scotland & Wales	EU Directive 2002/91/EC	

Important Notice Savills, its clients and any joint agents give notice that 1: They are not authorised to make or give any representations or warranties in relation to the property either here or elsewhere, either on their own behalf or on behalf of their client or otherwise. They assume no responsibility for any statement that may be made in these particulars. These particulars do not form part of any offer or contract and must not be relied upon as statements or representations of fact. 2: Any areas, measurements or distances are approximate. The text, photographs and plans are for guidance only and are not necessarily comprehensive. It should not be assumed that the property has all necessary planning, building regulation or other consents and Savills have not tested any services, equipment or facilities. Purchasers must satisfy themselves by inspection or otherwise. 20210205JEAR

